

Historic, Archive Document

Do not assume content reflects current scientific knowledge, policies, or practices.

62.89

Waynesboro Nurseries

Planting Guide for 1944

LIBRARY
FEB 8 - 1944
U. S. Department of Agriculture

WINDSOR
CHERRY

RED ROME
APPLE

EUROPEAN
PRUNE

INDIAN SUMMER
EVERBEARING
RASPBERRY

MONTMORENCY
CHERRY

ABUNDANCE
PLUM

GORHAM
PEAR

GOLDEN
JUBILEE
PEACH

PAPER SHELL
PECAN

WAYNESBORO
Nurseries
INC.
Waynesboro
Virginia



Make Your Home More Fruitful and Beautiful

BY PLANTING

WAYNESBORO Grown Trees and Plants

Offered By Virginia's Largest Growers

GROW YOUR OWN FRUIT—Never before have Home Owners so fully realized the advantage and necessity of growing their own fruit. Even if possible to go to market and purchase fresh fruits, the price would be high and fruit from the market is never quite as much enjoyed as fruit from your own garden or orchard. So you can economize by growing your own fruit and also enjoy more and better fruit.

MAKE YOUR HOME MORE BEAUTIFUL—By planting Waynesboro Selected Trees, Shrubs, Evergreens, Roses, etc. You will not only increase the value of your property, but will receive the pleasure of working with growing trees and plantings, and having beautiful grounds.

OFFERING *The Newer, Better Varieties*

Being large growers and having the facilities for testing the new, improved varieties, we are in position to select and recommend to our customers improved varieties which have been tested and found to be worthwhile. So while we continue to list the most popular of the old varieties, we are continually adding improved ones.

DEPENDABLE INFORMATION—While we attempt to give the better qualities in the descriptions of varieties, we also mention any unfavorable qualities a variety may possess, so that the planter may be guided by same in making a selection. May we add that varieties of plant material are somewhat like human beings—none are perfect—and we do not claim to offer more than 800 varieties, all without fault.

WE ARE ANXIOUS TO HELP YOU select varieties best suited to your requirements and to furnish as far as possible the necessary information to afford proper arrangement.

HORTICULTURAL ADVICE AND LANDSCAPE SERVICE—We have in our service Trained Horticulturists, as well as Graduate Landscape Architects, whose services are available to our customers. However, we must admit that during the past year—being short of help—we have not been able to supply as much of this service as we would like. If in need of help, please apply early in the season.

Our Delivery Seasons and Guarantees

DATE OF DELIVERY—Nursery Stock differs from most other commodities by being limited to a definite delivery season. We most generally conceive of two distinct delivery seasons per year, the regular Fall season starting early in November and continuing until late December, and the Spring season starting early in March and continuing until June. There, however, is seldom a week in which we do not deliver some stock. We do not promise deliveries on definite dates, as we must be somewhat governed by the season and weather conditions. Some seasons we can start general Fall deliveries by November 1st, while other years the plants do not mature so we can start digging before November 10th. However, Evergreens, Perennials, Iris, Peonies, etc., can be successfully transplanted as early as August. Regardless of whether on November 1st or 10th, or what date, we attempt to make delivery at such a time as the best results can be obtained.

CERTIFICATE OF INSPECTION—Issued by Virginia State Entomologist—certifying that our Nursery has been inspected and the plant material found to be free of disease and pests—furnished with each shipment.

TRANSPORTATION—We are located on two trunk line railroads and also have motor freight lines out of Waynesboro, affording the best of transportation service.

PRICES—The prices quoted are f.o.b. our shipping point or for local delivery on our regular truck routes. We make no charge for packing and delivering to our local freight, express, or motor freight office.

TERMS—Cash with order unless otherwise arranged.

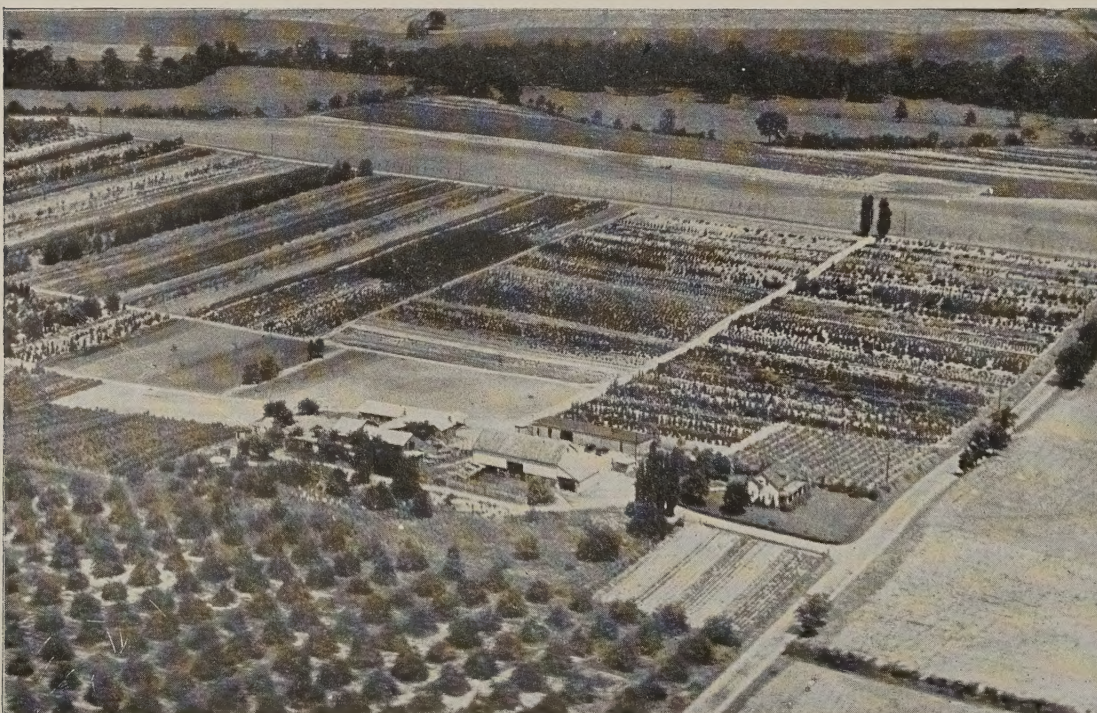
REMITTANCES—Remittances may be made by Postal Money Order, Express Money Order, or your personal check, if you prefer.

LIBERAL REPLACEMENT TERMS—While losses from transplanting our vigorous, carefully handled stock are at a minimum, there are always some losses to be expected, regardless of how careful both Nurseryman and planter may be. We agree to share with our customers any losses from transplanting our stock by refurnishing at half catalogue list price any plant material reported dead within twelve months after date of delivery, provided the original purchase was paid for as per sale terms and the plant material has been given reasonable attention.

VARIETIES AND QUANTITIES—In case you do not find listed the variety, quantity, or size desired, write for further information.

MAKING UP ORDERS—Do not fail to give sizes, quantities, and varieties wanted. Also give shipping point if different from post office, and approximately when you would like your stock shipped.

NOTICE OF WARRANTY—While we are very careful to keep our varieties true to name, in the event they should prove otherwise, we cannot be responsible for more than the amount we receive for the stock.



An Airplane View of One Section of Our 1000-Acre Nursery

LET US
HELP YOU
Grow More Fruit
and
Have More
Beautiful
Grounds

Waynesboro
Nurseries, Inc.
WAYNESBORO
VIRGINIA

FRUIT DEPARTMENT

GET THIS BIG LIVE MAGAZINE NOW!

60 MONTHS \$1.00 or 12 MONTHS 25¢

YOU will be delighted and wonder how these two great up-to-the-minute illustrated magazines, now printed together, can cost so little. It's for all—men, women, boys and girls,—clean and wholesome, no liquor advertisements.

Farm Journal and Farmer's Wife, Dept. C, Phila., Pa.

I'm enclosing \$1.00 for 60 months subscription **OR** I'm enclosing 25c for 12 months subscription

Mark the Offer You Want. Send Money Our Risk.

Name _____

R.F.D. _____ Box _____ or Street _____

If you live on a R. F. D. put route number above for prompt service.

P. O. _____ State _____

IMPORTANT: Send coupon direct to Farm Journal and Farmer's Wife, Dept. C, Philadelphia 5, Pa., with remittance (at our risk). Offer good only in U. S.



but be superior.

Planters differ as to choice of varieties, sized trees, date to plant, etc. The New Double Red Strains have almost displaced the old varieties, and the tendency is towards using older, larger trees. All experienced planters are taking pollenization into consideration in planting new orchards or even in replanting old orchards. So we recommend an assortment of varieties to provide for pollenization; it is best not to depend altogether on one variety.

You will note that we have made two divisions of Apples. The first group contains Summer and Fall Varieties; the second group, Winter Varieties—the varieties in both groups being listed alphabetically.

SUMMER and FALL APPLES

Summer and Fall varieties have been neglected in commercial plantings and are now proving, in many cases, more profitable than Winter Varieties. In the home orchard a selection from this list will furnish fried Apples and sauce from early June and ripe fruit from late June until November. We offer the following choice varieties:

BALDWIN. An old New England commercial Winter variety; a Fall variety in Virginia, where it has limited use. Green, red striped.

BONUM. An excellent commercial Fall Apple; extremely popular in the western part of North Carolina. Medium size, red; good quality, heavy bearer.

EARLY HARVEST. One of the best known early Apples, ripening in Virginia in late June. Large, golden yellow; popular for the home orchard.

EARLY RED BIRD. A new scarlet red Apple several days ahead of Yellow Transparent. Affords the market with an early red Apple of good size, quality; good shipper.

FALL PIPPIN. An old favorite family variety ripening in August. Large golden yellow. Good for frying, as soon as half matured, and most delicious when ripe.

GRIMES GOLDEN. A well known, spicy, medium size, golden yellow, commercial and home orchard variety. Ripens late Fall.

HYSLOP CRAB. Most popular red, medium size Crab. Used chiefly for jellies and pickling. Strong growing tree, prolific bearer.

LIVELAND RASPBERRY. A beautiful, delicious Summer striped Apple, ripening in August. Planted chiefly for home use as it is too tender to be a shipper.

LODI. An improved Yellow Transparent, being larger than its parent and ripening a few days later. Due to its being larger in size, the Lodi is expected to become even more popular than the well known Yellow Transparent. Good early varieties have been neglected in commercial orchard planting, so we recommend including the Lodi, as well as some of the other Summer varieties, in your next commercial planting.

MAIDEN BLUSH. August and September. Medium to large, yellow background, with red blush. Firm, good shipper.

MILTON. A member of the McIntosh family, ripening in August. Possesses the McIntosh quality and appearance.

SMOKEHOUSE. An old home orchard favorite which still deserves a place in every family orchard. Medium to large, firm, greenish background, red striped. Ripens over a period of several weeks, which makes it ideal for home use. Excellent for cooking and for eating from hand when full ripe.

long experience can give you. We are con-

and plants for successful growing in your until its merits have been proven—and you

uit as possible, not altogether for economy's raising. Fruit can never taste quite so good

E of! Let Virginia's Largest Growers supply

are DOUBLE Inspected

ANNOUNCED FREE OF DISEASE
by Virginia State Entomologist

ANNOUNCED TRUE TO NAME
by Professor Shaw

Authority on Identification of Varieties

ss. State College, reports:

May Concern:

that all the salable Apple stock now growing in the Waynesboro Nurseries, Inc., near Waynesboro, Virginia, for trueness to name by A. P. French, O. C. Roberts, and, as they now stand in the nursery row all trees are, knowledge and belief, true to name.

J. K. SHAW, Research Professor of Pomology

BONUM A MONEY MAKER

"We do not attempt to grow commercially in our test orchards all the varieties on our list, but from three small Bonum Trees planted for home use, we sold in August, 1943, \$70.00 worth of Apples to local chain stores after the families on the property had supplied their own tables and satisfied the appetites of a number of youngsters."



Lodi

See Page 4 for Apple Tree Prices

Make Your Home More Fruitful and Beautiful

BY PLANTING

WAYNESBORO

Offered

GROW YOUR OWN FRUIT—Never before have owners so fully realized the advantage and need of growing their own fruit. Even if possible to go to the market and purchase fresh fruits, the price would be high and not so much enjoyed as fruit from your own garden or orchard. So you can economize in growing your own fruit and also enjoy more and better fruit.

MAKE YOUR HOME MORE BEAUTIFUL—By planting Waynesboro Selected Trees, Shrubs, Evergreens, etc. You will not only increase the value of your property but will receive the pleasure of working with growing plants, and having beautiful grounds.

OFFERING The Newer, Better Varieties

Being large growers and having the facilities for testing improved varieties, we are in position to select and recommend to our customers improved varieties which have been tested to be worthwhile. So while we continue to list the most popular old varieties, we are continually adding improved ones.

DEPENDABLE INFORMATION—While we attempt to give the best descriptions of varieties, we also mention any unfavorable qualities a variety may possess, so that the planter may be guided by same in making a selection. May we add that varieties of plant material are somewhat like human beings—none are perfect—and we do not claim to offer more than 800 varieties, all without fault.

WE ARE ANXIOUS TO HELP YOU select varieties best suited to your requirements and to furnish as far as possible the necessary information to afford proper arrangement.

HORTICULTURAL ADVICE AND LANDSCAPE SERVICE—We have in our service Trained Horticulturists, as well as Graduate Landscape Architects, whose services are available to our customers. However, we must admit that during the past year—being short of help—we have not been able to supply as much of this service as we would like. If in need of help, please apply early in the season.

TAKE YOUR CHOICE

12 MONTHS
25¢

More For Your Money
—Send \$1.00 for 60 months and protect against price increase and additional paper rationing. Or 25¢ gives you 12 big issues, biggest value ever for a Quarter.

60 MONTHS
\$1

Something for the Whole Family
Farm Journal and Farmer's Wife is published monthly; big issues; new timely features; fine pictures; beautiful colored covers. Brief, easy to read; 67 years old. Largest subscription list in the world—over 2,700,000 from Maine to California; Money back if not satisfied.

UNLIKE ANY OTHER MAGAZINE

For folks who live in the Country and love the Country. Printed on fast-running presses; this Month Ahead-Magazine gets the important news to you first when it is valuable and useful.
Farm Journal section: Latest ideas in farm practice, equipment and machinery repairs, livestock, dairying, poultry, crops, orchard, garden, and everything about the farm. Latest Washington news important to farmers.
Farmer's Wife section carries new practical ideas on home decorations, fashions, fancywork, health and beauty. Canning, foods recipes tested in our own Farm Kitchen. Features on country life. Farm Women's letters, etc. Fiction by nationally known authors. Youth section: Latest 4-H Club and FFA news, answers to youths' problems, grooming, etiquette, parties, games, movies, sports, aviation, hobbies, success stories, money-making ideas, jokes, cartoons, etc.

WILL HELP YOU GROW A BETTER GARDEN

Mail this Coupon today with remittance (at our risk), direct to Farm Journal and Farmer's Wife, Dept. C., Philadelphia 5, Pa.

Recommended by
WAYNESBORO NURSERIES, INC.
Virginia's Largest Grower of Fruit Trees and Ornamentals

If you are now a Subscriber, you may mail or give this Valuable Coupon to a friend who is not.

TERMS—Cash with order unless otherwise arranged.

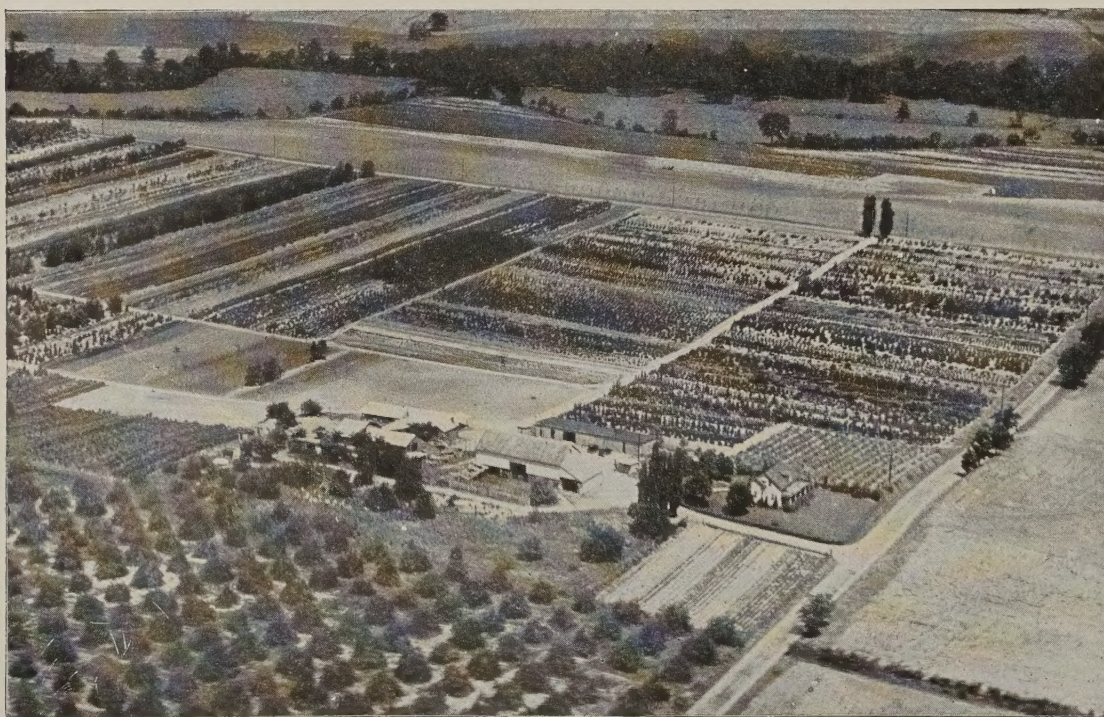
REMITTANCES—Remittances may be made by Postal Money Order, Express Money Order, or your personal check, if you prefer.

LIBERAL REPLACEMENT TERMS—While losses from transplanting our vigorous, carefully handled stock are at a minimum, there are always some losses to be expected, regardless of how careful both Nurseryman and planter may be. We agree to share with our customers any losses from transplanting our stock by refurbishing at half catalogue list price any plant material reported dead within twelve months after date of delivery, provided the original purchase was paid for as per sale terms and the plant material has been given reasonable attention.

VARIETIES AND QUANTITIES—In case you do not find listed the variety, quantity, or size desired, write for further information.

MAKING UP ORDERS—Do not fail to give sizes, quantities, and varieties wanted. Also give shipping point if different from post office, and approximately when you would like your stock shipped.

NOTICE OF WARRANTY—While we are very careful to keep our varieties true to name, in the event they should prove otherwise, we cannot be responsible for more than the amount we receive for the stock.



An Airplane View of One Section of Our 1000-Acre Nursery

LET US
HELP YOU
Grow More Fruit
and
Have More
Beautiful
Grounds

Waynesboro
Nurseries, Inc.
WAYNESBORO
VIRGINIA

FRUIT DEPARTMENT

On the following pages we offer you the finest strains of Fruit varieties our long experience can give you. We are constantly improving existing varieties and testing new introductions.

As Virginia's Largest Growers, we confidently recommend our fruit trees and plants for successful growing in your home or commercial orchard or garden. We do not present a new introduction until its merits have been proven—and you may be sure our strains of your old favorites are the best to be had.

At last we have come to realize the importance of growing as much of our fruit as possible, not altogether for economy's sake, but much pleasure and satisfaction can be found in gardening and fruit raising. Fruit can never taste quite so good as when gathered from our own gardens and orchards.

But don't waste precious time and land by planting stock you can't be SURE of! Let Virginia's Largest Growers supply your needs—with strains that have been thoroughly tested for performance.

APPLES

The Apple continues to be the King of Fruits. By carefully selecting varieties, fresh fruit can be harvested from your trees over a period of six months and the better Winter varieties can be kept in common storage until the new crop is harvested—making fresh fruit possible throughout the year.

Our selection of varieties of Apples has been carefully made up after many years of growing and testing. The newer, better varieties are listed only after having been thoroughly tested and found to excel older varieties of the same class. So if you do not find in our list an old favorite you so much enjoyed in grandfather's orchard, you most likely will find that we do list an improved variety which will not only take its place, but be superior.

Planters differ as to choice of varieties, sized trees, date to plant, etc. The New Double Red Strains have almost displaced the old varieties, and the tendency is towards using older, larger trees. All experienced planters are taking pollenization into consideration in planting new orchards or even in replanting old orchards. So we recommend an assortment of varieties to provide for pollenization; it is best not to depend altogether on one variety.

You will note that we have made two divisions of Apples. The first group contains Summer and Fall Varieties; the second group, Winter Varieties—the varieties in both groups being listed alphabetically.

SUMMER and FALL APPLES

Summer and Fall varieties have been neglected in commercial plantings and are now proving, in many cases, more profitable than Winter Varieties. In the home orchard a selection from this list will furnish fried Apples and sauce from early June and ripe fruit from late June until November. We offer the following choice varieties:

BALDWIN. An old New England commercial Winter variety; a Fall variety in Virginia, where it has limited use. Green, red striped.

BONUM. An excellent commercial Fall Apple; extremely popular in the western part of North Carolina. Medium size, red; good quality, heavy bearer.

EARLY HARVEST. One of the best known early Apples, ripening in Virginia in late June. Large, golden yellow; popular for the home orchard.

EARLY RED BIRD. A new scarlet red Apple several days ahead of Yellow Transparent. Affords the market with an early red Apple of good size, quality; good shipper.

FALL PIPPIN. An old favorite family variety ripening in August. Large golden yellow. Good for frying, as soon as half matured, and most delicious when ripe.

GRIMES GOLDEN. A well known, spicy, medium size, golden yellow, commercial and home orchard variety. Ripens late Fall.

HYSLOP CRAB. Most popular red, medium size Crab. Used chiefly for jellies and pickling. Strong growing tree, prolific bearer.

LIVELAND RASPBERRY. A beautiful, delicious Summer striped Apple, ripening in August. Planted chiefly for home use as it is too tender to be a shipper.

LODI. An improved Yellow Transparent, being larger than its parent and ripening a few days later. Due to its being larger in size, the Lodi is expected to become even more popular than the well known Yellow Transparent. Good early varieties have been neglected in commercial orchard planting, so we recommend including the Lodi, as well as some of the other Summer varieties, in your next commercial planting.

MAIDEN BLUSH. August and September. Medium to large, yellow background, with red blush. Firm, good shipper.

MILTON. A member of the McIntosh family, ripening in August. Possesses the McIntosh quality and appearance.

SMOKEHOUSE. An old home orchard favorite which still deserves a place in every family orchard. Medium to large, firm, greenish background, red striped. Ripens over a period of several weeks, which makes it ideal for home use. Excellent for cooking and for eating from hand when full ripe.

Our Trees are DOUBLE Inspected

PRONOUNCED FREE OF DISEASE
by Virginia State Entomologist

PRONOUNCED TRUE TO NAME
by Professor Shaw

A National Authority on Identification of Varieties

Professor Shaw, Mass. State College, reports:

"To Whom It May Concern:

"This is to state that all the salable Apple stock now growing in the nurseries of the Waynesboro Nurseries, Inc., near Waynesboro, Virginia, have been examined for trueness to name by A. P. French, O. C. Roberts, and L. Southwick and, as they now stand in the nursery row all trees are, to the best of our knowledge and belief, true to name."

(Signed) J. K. SHAW, Research Professor of Pomology

BONUM A MONEY MAKER

"We do not attempt to grow commercially in our test orchards all the varieties on our list, but from three small Bonum Trees planted for home use, we sold in August, 1943, \$70.00 worth of Apples to local chain stores after the families on the property had supplied their own tables and satisfied the appetites of a number of youngsters."



Lodi

SUMMER and FALL APPLES

(Continued)

RED DUCHESS. Differs from the Standard Duchess by having more color and coloring earlier in the season. We recommend this Double Red Strain.

SUMMER RAMBO. In Virginia and adjoining States there is possible no other variety found in so many orchards. This famous old Apple is so well known that no home orchard is believed to be complete without it. It is also popular with many of the commercial growers, as it is always in demand at good prices. Large, red striped. You cannot go wrong in planting the Summer Rambø.

SUMMER YELLOW DELICIOUS. Another golden yellow Summer Apple; resembles the Winter Yellow Delicious, but ripens in July.

WILLIAMS EARLY RED

Considered by many as the best commercial Summer Red Apple. Has been a money maker for commercial growers. Also an excellent home Orchard Apple.

Large for an Apple of its season. Ripens around the middle of July. The trees are good growers and prolific bearers; fruit beautiful in appearance and a good shipper.

YELLOW TRANSPARENT. A well known, transparent to golden yellow Apple. Among the first yellow varieties to ripen. In our opinion, the Yellow Transparent will be somewhat replaced by the Lodi.

WINTER APPLES

In speaking of Winter Apples we refer to varieties which are harvested in late Fall and may be kept in storage for Winter and next Spring use. A large percent of the commercial crop consists of Winter varieties. However, some of the Summer or Fall varieties are now proving equally as profitable.

ALBEMARLE PIPPIN. Its name was taken from Albemarle County, Virginia, where it has been one of Virginia's most popular export Apples. Known in other parts of the country as Newtown Pippin. Large, solid green Apple; very crisp; delicious in late Winter and Spring, when it is at its best. Good keeper.

BEN DAVIS. An old variety of poor quality, but a good bearer, keeper, and pollinizer. Medium size, red striped.

DELICIOUS. Possibly one of the best known Winter varieties. Large, red striped, almost sweet. Late Fall and Winter. Good keeper in storage. Extensively grown and planted as a commercial variety, as well as in home orchards. In the past few years the Standard Delicious is being replaced to a great extent by the Vance Delicious or some of the other Double Red Strains.



Double Red Delicious

APPLE TREE PRICES

	1 to 10 Each	10 to 50 Each	50 to 300 Each
1 yr., 2-3 ft. Whips.....	\$0.75	\$0.60	\$0.45
1 yr., 3-4 ft. Whips.....	1.00	.80	.60
2 yr., 2½-3 ft., Partly branched.....	.75	.60	.45
2 yr., 3-5 ft. Branched.....	1.00	.80	.60
2 yr., 4-6 ft. Branched.....	1.35	1.10	.80
3 yr., 5-7 ft. SUPER SIZE.....	1.60	1.35	.90

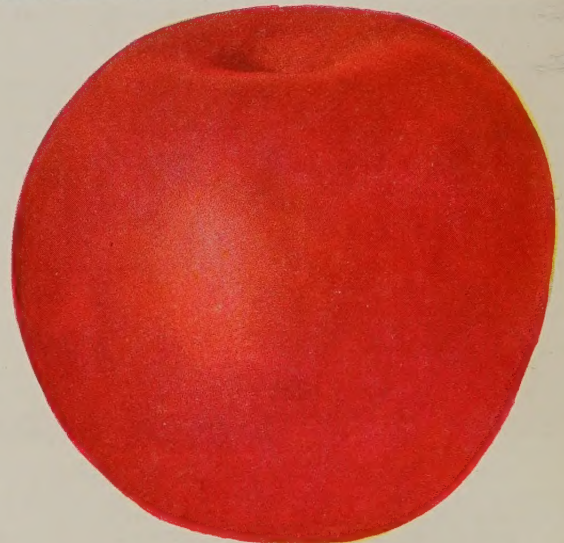
NOTE—Write for prices on larger quantities

See Page 5 for Large Size Apple Trees

NOTE—Following special varieties offered at 10c. per tree above standard variety prices: Lady, Vance Delicious, and Yorking

CORTLAND. An improved McIntosh; longer keeper; larger, deeper red. Not often planted south of New York State.

DOUBLE RED DELICIOUS. The Standard Delicious is too well known to require a detailed description. The New Double Red Delicious is identically the same as the Standard Delicious with the exception of color—being a solid red—and coloring two to three weeks earlier. This means a tremendous commercial advantage, as well as the home orchard owner prefers Solid Red Apples to half green ones. So we recommend the Double Red Delicious in place of the Standard Delicious, which we also list.



Double Red Jonathan

DOUBLE RED ROME

Another of the many Red Sports improving on their parent variety by being a Solid Red, which means more Number One Apples and better prices. There are numerous strains of Rome Sports. This particular strain originated in the Northwest and is known by some as C & O Red Rome.

DOUBLE RED JONATHAN

An improvement over the well known Jonathan—having more color and coloring earlier. This means more profit to the commercial grower and to the home grower, more attractive Apples.

DOUBLE RED STAYMAN

The Stayman Winesap continues to be one of the most popular commercial varieties of the East, but in recent years the original strain of Stayman is being replaced by its offspring, the Double Red Stayman, which has all the good qualities of its popular parent and the advantage of more color and coloring earlier in the season. This means more Number One Apples, better prices, and bigger profits. This popular commercial variety is one of our best sellers for both commercial and home orchard planting.

JONATHAN. A well known commercial variety. Medium size; greenish background, red cheek, white flesh. Ready for market early Winter. Still popular as a commercial variety. However, we now recommend the New Red Jonathan.

LADY. Small, golden background, red blush; highly flavored; excellent quality. Extremely popular for decoration purposes on dining room and dining car tables and eating from hand. The fruit is rare and sells for unusually high prices. 10c. extra per tree.

LOWRY. Virginia ranks high as an Apple producing State—growing many good varieties. Among her leading varieties is the Lowry, which originated in Nelson County, Virginia and is now becoming one of the State's most profitable Apples as well as it is being commercially planted in almost all other Apple growing sections of the United States. The Lowry is medium to large, mahogany red, as sweet as the Delicious but is more easily grown and sells for fully as much. An ideal Apple for the roadside stand and truck trade as well as it makes a beautiful cold storage pack and is a remarkable keeper; keeps even better than the Delicious in cold storage.

Yorking

For more than a hundred years the York Imperial Apple, which originated in Pennsylvania, was one of Virginia's most popular commercial and home orchard varieties. No Apple was found good enough to dislodge it from its position at the top of the ladder

until its offspring **YORKING**, The York Supreme, was introduced 10 years ago.

The **YORKING** is a sport of the famous York Imperial, differing by being a solid red and coloring 2 or 3 weeks earlier. The **YORKING** has now almost entirely displaced the York Imperial in new plantings. This new solid red sport is one of the few Apples ever to be honored with a U. S. Patent. 10c. extra per tree.



Yorking

- MACOUN.** A late McIntosh, possessing better color and keeping qualities.
- M. B. TWIG.** A well known, large red Apple of the Winesap family. Firm, long keeper. A shy bearer.
- McINTOSH.** A medium-size well known, red striped Apple. A Winter variety in the New England States, but only a Fall Apple in Virginia where it is little planted.
- N. W. GREENING.** One of the few green skinned Apples in popular demand. Large, greenish yellow. Good cooker and an excellent keeper. Prolific bearer.
- RED SPY.** A sport of the well known Northern Spy differing by having more color.
- ROME BEAUTY.** Another oldtime red striped Apple, which continues to be popular in both the home and commercial orchard. Semi-sweet, firm, good keeper. An excellent Apple, but we recommend the New Double Red Strains.

PARAGON WINESAP. Resembles M. B. Twig but is a better bearer and is recommended in preference to the M. B. Twig.

A Whole Orchard on a Single Tree!

5-In-1 Tree

Such a tree is made possible by grafting with varieties from the earliest to the latest. An ideal tree where space can accommodate only one, two or three trees. The varieties grafted on 5-In-1 Trees will vary, but most generally consist of Yellow Transparent, Summer Rambo, Grimes Golden, Winesap and Delicious. 5-In-1 Trees are offered only in 3 and 4 yr., 5-7 ft. size at \$4.00 each.

4-In-1 Tree

4-In-1 Trees are produced in the same manner as the 5-In-1, serving the same purpose but having one less number of varieties. These Multiple Variety Trees are not only practical trees for the home garden or lawn, but are new, interesting and the average grower takes pride in showing same to his friends. 3 yr. 5-7 ft. size, \$3.50 each.

3-In-1 Tree

Consists of 3 choice varieties ripening at different seasons furnishing fresh fruit over a longer period at very little extra cost. Multiple Variety Trees are usually more prolific than trees of a single variety as they provide excellent cross pollination. 3 yr., 5-6 ft. size, \$3.00 each.

Vance Delicious

Numerous strains of Delicious Sports are now on the market. We have tested the most promising ones and find to be outstanding the Vance Delicious, a red sport which originated in Albemarle County, Virginia, and was introduced by the late R. G. Vance, who at one time served as President of the Virginia Horticultural Society. The Vance Delicious has all the good characteristics of the best Red Sports—being fully as large and having typical Delicious shape, flavor, and quality—but differs by coloring earlier, being the first of the Red Delicious Strains ready for market. This enables Eastern growers to market their fruit before the Western Pack appears as competition. 10c. extra per tree.

STAYMAN WINESAP. One of the best known, most extensively planted of the Winter varieties. Large, green background, red striped. Rich, crisp, tender, yellow meat. An excellent cooker, as well as for eating from hand. Its only fault is cracking in wet weather and being somewhat shy of color.

SWEET PARADISE. One of the most popular late Fall sweet Apples. Medium size, greenish background, red cheek.

TURLEY WINESAP. An Improved Stayman, resembling the Standard Stayman closely but is less subject to cracking and has better color.

VIRGINIA BEAUTY. A native of the State, an Apple of which Virginia is proud. Late Fall and early Winter. Resembles Red Delicious in quality and shape, but darker color. Excellent quality.

WINESAP. A variety that has probably done as much as any other Apple in winning a reputation for Virginia Apples on all markets of the world. It is also popular in almost all other parts of the U. S. and comes as near being adapted to all soils and climates as any Apple we know of. Medium size, red skin slightly streaked on yellow, flesh firm, crisp, sub-acid. November to May.

YELLOW DELICIOUS. Listed by some as Golden Delicious. Conical shape, golden yellow. Somewhat resembles Grimes Golden but larger. An early prolific bearer. Popular as a home orchard variety as well as a profitable commercial Apple. Recommended as a cross pollinator.

YORK IMPERIAL. Undoubtedly the most extensively planted commercial Apple in the famous Shenandoah Valley and Blue Ridge area of Virginia, West Virginia, and Pennsylvania. Greenish yellow background, red striped cheek. Prolific bearer, excellent keeper. In recent years the York Imperial is being replaced with its offspring, Yorking, a Solid Red York.



Double Red Stayman

Save Time In Growing Fruit

By planting our Jumbo, Mammoth, Giant and Bearing Size Apple Trees, which have been twice transplanted and will furnish fruit much earlier than the smaller, younger trees. We especially recommend these larger trees for replanting where pollination is a problem; also for planting home orchards. At this time we have available the following varieties in the large sized trees, but suggest that you make a second choice in case we should be out of the first choice at the time your order is received.

	Bonum	Jonathan	Virginia Beauty
	Cortland	Macoun	Williams Early Red
	Double Red Delicious	McIntosh	Winesap
	Double Red Duchess	Paragon Winesap	Yellow Delicious
	Double Red Jonathan	N. W. Greening	York Imperial
	Double Red Rome	Stayman	YORKING
	Double Red Stayman	Turley Winesap	
			1 to 10
			Each
4 yr., 5-7 ft., JUMBO SIZE.....			\$2.25
5 yr., 7-8 ft., MAMMOTH SIZE.....			3.00
6 yr., 1½-2 in. caliper GIANT SIZE.....			4.50
7 yr., 2-2½ in. caliper BEARING SIZE.....			6.00
			10 to 50
			Each
			50 to 300
			Each
			\$1.50
			2.00
			4.00
		

See Page 4 for Commercial Orchard Size Apple Trees

Peaches

Peach Industry Being Revolutionized

New methods of freezing, evaporating and keeping fresh Peaches on storage are greatly enlarging the use of Peaches—insuring a good demand and a profitable income for years to come. The moderate planting of properly located orchards has promise of being a profitable investment.

PEACHES IN READY DEMAND.

The fruit is most generally in demand at good prices, since the crops in various communities ripen at different times—preventing congested markets.

BETTER MARKETS.

The rapid increase in the population of the South, caused by manufacturing coming to the South, has greatly strengthened our Southern markets.

Good roads and trucks have made it possible for markets, large and small, to daily have fresh fruit from the orchard, greatly increasing consumption. This has also made it advisable to plant a larger assortment of varieties ripening over a longer period.

MUCH DEPENDS ON THE TREES YOU PLANT.

Fibrous rooted trees, grown in our sandy loam soil, transplant with fewer losses and better results than trees grown in less suitable soil.

NATURAL ADVANTAGES.

Being located in the Commercial Peach Orchard Section of Virginia, we are able to study the varieties in bearing orchards and cut our budwood from bearing trees. We have an opportunity of studying the new varieties, adding the promising ones and discarding those less desirable. So we attempt to serve as a bureau of information to the commercial grower, as well as furnish dependable trees.

We Offer the Following Choice Varieties

ALTON. Large white, semi-freestone. Good quality for an early Peach. July.

BELLE OF GEORGIA. An old Peach yet unsurpassed for a white freestone home and commercial variety. Large, white skin, red cheek; sweet, excellent peachy flavor. August.

BRACKETT. An improved Elberta, ripening a few days later; same size, better color and quality. Will hang on the tree longer than the Elberta and is a better shipper.

CARMAN. An old favorite white semi-freestone Peach which continues to be popular, because of its large size, being a prolific bearer, and having good canning qualities. July.

CHAMPION. Another old home orchard favorite. Large, white semi-freestone. Very hardy in bud, often producing a full crop when other varieties fail. A good home orchard variety for the roadside stand and local market. August.

CRAWFORD'S EARLY. Continues to be planted for home use because of its good quality. Yellow, freestone. August.

CRAWFORD'S LATE. Another old variety which has survived in spite of numerous new and improved varieties. Yellow, freestone; firm, medium size, good quality. A very good shipper, but now planted only in the home orchard. Late August.

EARLY ELBERTA. A yellow, freestone of the Elberta-type, ripening two weeks earlier. A desirable variety where a succession of ripening fruit is desired for home use, roadside stand, and local market.

EARLY ROSE. A popular, early, white semi-freestone. Medium size, bright red cheek. July.

ELBERTA. Continues to be the most extensively planted Peach, not the best Peach in quality, but its size, color and firmness combine to make it the most popular commercial variety. A lengthy description is not necessary as everyone knows the Elberta. Yellow, freestone; red cheek. August.

GAGE ELBERTA. Differs from the old Elberta by being resistant to bacteriosis, which is one of the Peach growers' problems in the South. Same size and shape as the standard Elberta, ripening five days later.

GOLDEN JUBILEE. While still a new Peach, it possibly ranks second among varieties in the number of trees being planted. It is one of the first yellow, freestone Peaches of good quality to ripen. Good shipping qualities. Demands the top prices because of its earliness and good quality. This excellent new Peach is now being planted in almost every commercial orchard, as well as in home orchards. July.

GREENSBORO. An early variety planted commercially in the South and a very good Peach of its season. White, semi-freestone; red cheek. June.

HALE. A large, firm, yellow freestone. Golden yellow skin, red cheek. Excellent shipping qualities and demands the top prices on the market because of its size and good quality. Ranks high as a commercial variety. August.

HEATH CLING. While the East demands a freestone Peach, there is a limited demand for pickling Clings, one of the most popular of which is the Heath. Large, white, firm, good quality. Makes excellent pickles, and is also delicious when canned. September.

HILEY. A large white freestone of the Belle of Georgia type, ripening two weeks earlier. Planted both commercially and in the home orchard. July.

KRUMMELS. One of the most popular of the late varieties is the old favorite, Krummel's ripening early October. Large, firm, yellow, freestone.

LATE ELBERTA. Elberta type, but ripening in early September. A freestone with yellow background, red cheek; medium to large.

MAYFLOWER. Continues to be the earliest Peach listed in our catalogue. A beautiful red of medium size; white, clingstone. Sells because of its earliness and excellent color. The quality, of course, does not compare with that of later varieties, but it has a place in the home orchard, as well as for the roadside market. June.

MIKADO. A yellow-meated, semi-freestone Peach with yellow skin and red cheek. One of the first of the early varieties to possess good quality. Not recommended for general commercial purposes, but an excellent roadside stand Peach, as well as good for canning whole and pickling. July.

MED BIRD. A beautiful, large, red-skinned, white-meated Cling which always sells, even though the quality is not considered the best. Very firm; excellent shipper. Follows the Mayflower. June.



Famous
J. H. Hale
Peach

Peach Tree Prices

	Wholesale Rates			
	1 to 10 Each	10 to 50 Each	50 to 300 Each	300 to 600 Each
4-6 ft., Select	\$1.20	\$1.00	\$0.75	\$0.60
3-4 ft., Heavy	.85	.70	.60	.45
2-3 ft., Heavy	.65	.55	.45	.35
2-3 ft., Medium	.55	.50	.40	.30
18-24 in.	.50	.40	.30	.25

RED HAVEN. Our limited supply of the Red Haven does not justify the space in our catalogue that this new variety merits. Introduced by the Michigan State Experiment Station. Bright red coloring on a yellow background; smooth, almost fuzzless. Firm flesh; fruit ripens uniformly. Trees are strong growers and prolific bearers. Fruit should be thinned for best results. Has produced full crops in orchards where other varieties were Winter killed. Ripens about five days before the Golden Jubilee, which up to this time has been the leading commercial Peach of its season. 10c. per tree extra.

SHIPPER'S LATE RED. Large, round, yellow, freestone, with attractive red coloring. Ripens a few days later than the Elberta and of better quality. It sells for as much or more than Elberta. Ranks at the top as a commercial variety; equally as popular for the home orchard. Trees hardy, good growers, early and prolific bearers.

SLAPPY. Good quality home orchard variety. Very sweet, highly flavored; yellow-meated Freestone with red cheek; medium size. One of the best canning Peaches we know. Late July.

SOUTH HAVEN. Introduced by the Michigan Experiment Station. Yellow-meated freestone; good size and quality. Early August.

VALIANT. Famous Canadian variety now being planted in the United States. One of the earliest, yellow-meated, freestone Peaches of good quality and size. Yellow skin, red cheek. Early August.

VEDETTE. Possibly the most popular of the Canadian varieties planted in this country. Resembles the Valiant, but a few days earlier and three weeks before Elberta. Quality better than that of the Elberta or Valiant. Recommended for both commercial and home orchard planting.

Planting Guide

The ripening date given is for a normal season at Waynesboro, Virginia. Some years Peaches ripen earlier and some, later. Farther south Peaches ripen earlier and farther north, later.

Note: C—indicates Clingstone; F—Free stone; S—Semi-freestone

EARLY VARIETIES

Variety	Ripening Period
Mayflower (C)	June 15th
Red Bird (C)	June 20th
Greensboro (S)	June 25th
Early Rose (S)	July 10th
Alton (S)	July 15th
Mikado (S)	July 15th
Red Haven (F)	July 15th
Carman (S)	July 20th
Golden Jubilee (F)	July 20th
Vedette (F)	July 25th
Hiley (F)	July 25th
Slappy (F)	July 25th

MIDSEASON VARIETIES

South Haven (F)	August 1st
Early Elberta (F)	August 1st
Champion (S)	August 1st
Valiant (F)	August 5th
Crawford's Early (F)	August 5th
Belle of Georgia (F)	August 10th
Elberta (F)	August 15th
Hale (F)	August 15th
Brackett (F)	August 20th
Cage Elberta (F)	August 20th
Crawford's Late (F)	August 20th
Shipper's Late Red (F)	August 20th

LATE VARIETIES

Late Elberta (F)	September 1st
Heath Cling (C)	September 25th
Krummel's October (F)	October 5th



Shipper's Late Red

Espalier Fruit Trees

May be had in various types and varieties. Write for Special Illustrated Price List.

Shelby, Michigan,
September 13, 1943.

Waynesboro Nurseries,
Waynesboro, Virginia.

Gentlemen:

Inclosed please find picture of eight and one half bushels of Peaches picked from three trees bought of you three years ago, and sold for \$34.00 price, four dollars per bushel. Could have held a few days and received \$5.00 per bushel, but were afraid they might soften up.

These trees are Hale-Haven and this year have put on eighteen inches of growth, and sure look fine; and in thinning season I took better than four hundred peaches off each tree and then they were too heavy loaded.

I am very proud of my little peach orchard and you may use this letter and picture any way you see fit. Also I can furnish you picture of orchard with your block of trees and picture of block planted same year from another Nursery.

Yours very truly,
(signed) C. ELLIOTT



Red Haven



8½ Bu. Hale-Haven Peaches Harvested from Three Waynesboro Nursery Trees Planted 3 Yrs.

Cherries

The Cherry has always been one of the most delicious fruits, but has never been as extensively grown as the Apple and Peach. Unfortunately, it is not adapted to as wide a range of soil conditions and climates, but can be successfully grown in many localities where not cultivated at the present.

New processes of freezing fruit afford the Cherry great possibilities, making it possible to serve fresh Cherries throughout the year. As a commercial fruit, the Cherry is coming into its own, but if you are not in position to grow Cherries commercially, why not grow at least enough for home use? If you are located in the Deep South or in a low, flat country, you will not be able to compete with the growers in a higher altitude and cooler climate, but by careful selection of varieties and attention, you should be able to grow Cherries for home use, especially the Large Montmorency, the most popular pie variety.

Two Distinct Classes—the Sours and Sweets. The Sours are used chiefly for pies, while the Sweets have many uses. Outstanding among the Sweets is the Greenwood, a dark red, sweet variety. All the others on our list are also good and worthy of a place on any table.

SOUR CHERRIES

EARLY RICHMOND. Earliest of the sour, pie varieties. Bright red, round medium size, early and prolific bearer.

LARGE MONTMORENCY. The leading sour Cherry, and the most extensively planted of all Cherries. Large, midseason, dark red; small seed, firm flesh. A large percent of all the frozen Cherries used for pies are Montmorency which is also just as popular in the home orchard.

I am glad to inform you that all the trees you supplied me last Spring are thrifty, but I have been careful to have them properly supplied with water at suitable intervals.

(signed) Arthur Baldwin,
Charlottesville, Virginia.

August 15, 1943



Large Montmorency



Greenwood

SWEET CHERRIES

STANDARD VARIETIES

- BING.** A large, firm, almost black; excellent shipper. Adapted to a wide range of soils and climates. Very hardy. Midseason.
- BLACK TARTARIAN.** Well known dark, purplish black. Large, firm, good shipper, good quality. Heavy bearer. Early.
- GOVERNOR WOOD (Wax).** Beautiful, early, golden Cherry with red cheek. Extremely popular in the home orchard.
- LAMBERT.** Large, dark red, rich and firm. A heavy and regular bearer. Tree a good grower, more resistant to fungous diseases and insects than average varieties. Good shipper. Late.
- NAPOLEON.** The most extensively planted of the Wax Cherries, ripening two weeks later than Governor Wood, larger and better shipper. Beautiful golden background, bright red cheek.
- SENECA.** Earliest sweet variety; dark, purplish black; good quality, medium size.

Prices on Sour Cherries and Standard Varieties of Sweet Cherries

	1 to 10 Each	10 to 50 Each
4-6 ft.	\$2.25	\$2.00
3-4 ft.	1.75	1.50
2-3 ft.	1.50	1.25

Prize Super Varieties of Sweet Cherries

- GREENWOOD.** Enormous, mahogany red, sweet fruit; small seed. Firm and excellent shipper, as well as an ideal Cherry for roadside stands and home use. Trees are vigorous growers and prolific bearers. Apparently adapted to a wide range of soils and can be grown with a minimum amount of attention; however, it responds well to modern cultural practices.
- WINDSOR.** One of the largest of the dark purplish red Sweet Cherries, being two weeks later than the Greenwood; not quite as large and somewhat darker in color. These two big varieties make an ideal combination, since they ripen at different times and are two of the largest and most delicious Sweet Cherries known.

Prices on Greenwood and Windsor Sweet Cherries

	1 to 10 Each	10 to 50 Each
4-6 ft.	\$2.50	\$2.25
3-4 ft.	2.00	1.75

Plums Bear Young Easily Grown

We too often think of a home orchard as consisting of only Apples, Peaches, and possibly a few Grape vines, omitting important fruits—including the Plums, which may be had in various types ripening at different seasons.

There are two distinct types of Plums—the Oriental and European varieties. The Oriental Plums are generally quite juicy and tender, and can be best served when raw, fresh from the tree, while the European varieties are generally the firmer types, which are used for canning, preserving, butters, drying, etc. The Prune family belongs to the European Type Plums. We have endeavored to list the outstanding varieties of each class as follows:

- ABUNDANCE.** One of the best known of the Oriental varieties. Lemon yellow ground overspread with bright cherry red. Large, oblong, tapering to a point; flesh orange yellow, melting, rich and highly aromatic; abundant and annual bearer. August.
- BURBANK.** A long-standing favorite. Oriental variety. Large, nearly globular; clear Cherry red with deep yellow flesh. Very sweet with a peculiar, agreeable flavor. Early bearer. August.
- EUROPEAN PRUNE.** Excellent for canning, drying, and dessert, as well as eating fresh from the tree. Large, long, oval, purple; flesh firm, sweet and pleasant; freestone. September.
- RED JUNE.** An early red, Oriental type. Late bloomer, sure cropper. Quality good for an early Plum.
- SHROPSHIRE DAMSON.** An Improved Damson, much larger than the old type, but possessing all of its good qualities. The Damson is a late bloomer, almost a sure cropper, and one of the most useful of the Plums.
- STANLEY PRUNE.** An Improved Prune introduced by the New York Experiment Station and considered by many as the best. Large, firm, dark blue, juicy, fine grained, tender, sweet and of the very best quality. Late August.
- WICKSON.** The largest of the Oriental types. Deep maroon red. Good quality, but the variety has the one fault of being a shy bearer. August.



Stanley Prune

Plum and Pear Prices		1 to 10	10 to 50	50 to 300
		Each	Each	Each
	4-6 ft.	\$2.00	\$1.75	\$1.50
	3-4 ft.	1.65	1.40	1.25

Pears

Pears in the East are planted chiefly in the family orchard or in a limited way for local market and roadside stands, but offer possibilities as a commercial crop; few home owners are even growing enough of this delicious fruit for home use. The varieties we offer are those which have been thoroughly tested and found well adapted and desirable for planting in the territory we serve. So you cannot go wrong in making a selection from the following list.

NOTE:
Bartlett and Kieffer can be supplied in 7-8 ft. Mammoth Size at \$5.00 each.



Kieffer

- BARTLETT.** Large, rich golden yellow, red cheek; thin skinned, buttery and melting, with a rich, musky flavor. Tree a strong grower, bears young and abundantly. Extensively grown and most popular. August.
- CAYUGA.** A new, Improved Seckel, being larger than the old Seckel, but possessing its good qualities, including resistance to blight. September.
- CLAPP'S FAVORITE.** An old variety of very good quality. Lemon yellow, red cheek; medium size. One of the first to ripen. July.
- GARBER.** Very large, greenish yellow with splashes of red. Somewhat coarser grain than the Bartlett, but one of the best of its season. September.
- GORHAM.** Can be best described as an Improved Bartlett; equally as beautiful in appearance and as good in quality. Ripens two weeks later, a better keeper, extending the Bartlett season; less subject to blight.
- KIEFFER.** One of the largest best known Pears. Somewhat coarse grained, but one of the best canning varieties and is possibly planted in more home orchards than any other variety. One of the easiest Pears to grow, less subject to blight than many varieties, strong grower, early and prolific bearer. Golden background, with a red blush. Recommended not only for the home orchard, but for the local market and roadside stands. Late September.
- SECKEL.** The famous little brown, rusty-colored sweet Pear often referred to as Sugar Pear. Very sweet, fine grained, excellent quality. An ideal Pear for pickling and canning whole, as well as enjoyed when served fresh from the tree. Late September.

Planting Distances	Distance Planted	Approximate No. per Acre
Apples	30 to 35 ft.	40
Pears	20 to 25 ft.	80
Cherries	20 to 25 ft.	80
Plums, Apricots, Nectarines	15 to 20 ft.	150
Peaches, Quinces, Figs	18 to 22 ft.	100
Grapes	8 ft. apart in rows; rows about 6 ft. apart	1,000
Boysenberries, Dewberries, Youngberries	6 to 8 ft. apart	1,000
Raspberries, Blackberries, Blueberries	3 to 4 ft. apart in rows; rows 8 to 6 ft. apart	2,000
Strawberries	12 to 18 in. apart in rows; rows 1 to 2 1/2 ft. apart	10,000
Asparagus	12 to 18 in. apart in rows; rows 3 1/2 ft. apart	10,000
Rhubarb	4 ft. apart each way	2,750
Nut Trees	30 to 50 ft.	25

RULE—Multiply the distance in feet between the rows by the distance the plants are; number of square feet for each plant, which, divided into the number of square feet in an acre (43,560) will give the number of plants or trees to the acre.

NECTARINES

The Nectarine is another delicious fruit too seldom grown in the East. It is scarcely more than a fuzzless Peach. The tree habits, and the quality of the fruit are very much like those of the Peach with the exception of the fruit being smooth like a Plum.

We offer the **SURE-CROP**, which was imported from New Zealand by the United States Department of Agriculture. The fruit is large, bright red, and has a very pleasant flavor. The tree is hardy and productive, justifying all that the name **SURE-CROP** implies. The flesh of the fruit is white, juicy, fine grained, tender, sweet, aromatic and very good in quality.

4-6 ft., \$2.00 each; 10 rate, \$1.75 each 3-4 ft., \$1.60 each; 10 rate, \$1.35 each



ORANGE QUINCE

A very popular fruit which is seldom found on the market and is always in demand. Large, orange shaped; fine, golden, firm flesh of excellent quality. Best known of all Quinces.

4-6 ft. \$2.00 each; 10 rate, \$1.75 each
 3-4 ft. \$1.60 each; 10 rate, \$1.35 each



Superb Apricot

APRICOTS . . Superb

A hardy Russian variety, being most hardy of all, bearing when others fail. The Apricot can be successfully grown anywhere Peaches are grown and requires similar culture and care. Fruit beautiful golden yellow, slightly blushed; flesh firm and solid.

4-6 ft. \$2.00 each; 10 rate, \$1.75 each
 3-4 ft. \$1.60 each; 10 rate, \$1.35 each

Russian Mulberry

Hardy, prolific, sweet fruit greatly relished by birds and poultry. Fruit growers find it profitable to plant Mulberries near their Cherry trees as birds prefer the Mulberries, sparing the Cherries. Poultry raisers find Mulberry trees make desirable shade for the poultry lots, as well as furnish an abundance of fruit, which poultry enjoys and thrives on. Many people enjoy fresh Mulberries from the tree; however, they are too sweet for those who enjoy more acid fruits. The Mulberry is a rapid grower and annual bearer.

4-6 ft. . . \$1.75 each; 10 rate, \$1.60 each

Oriental Persimmon

The culture of this delicious fruit has been somewhat curtailed because many who are not familiar with it have attempted to compare it with our native Persimmon. It is regarded by some as being a tropical fruit. While it will grow in more tropical climates, it can be grown in Virginia, along the coastline much farther north, and generally throughout the South. A large, delicious fruit, averaging as large in size as our biggest Delicious Apples. The Tane-Nashi variety, which we grow and recommend, is roundish, conical in shape and the skin is bright red when fully ripe. As attractive in appearance as delicious in quality.

5-6 ft. \$2.25 each; 10 rate, \$2.00 each

Pawpaw

A fruit native to Virginia as well as some other sections of the country. Somewhat resembles the banana in shape, color, and taste. Relished by many; however it is very sweet and has a peculiar flavor, which at first does not always appeal, but with familiarity becomes quite agreeable. Small tree, seldom growing more than 15 feet. Fruit averages 4 inches in length and ripens in September and October.

2-3 ft. \$1.50 each

FIGS (Not recommended North of Virginia)

Figs have been very little planted in this section, but are becoming better known and the demand for them is constantly increasing. They are hardy in Eastern Virginia and along the Atlantic Seaboard as far north as Washington, D. C.

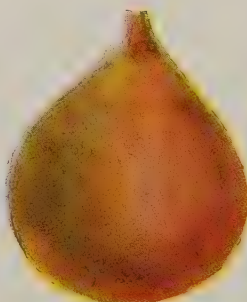
BROWN TURKEY. Large, dark brown skin covered with thick blue bloom; flesh red, very delicious flavor. One of the hardiest varieties.

CELESTIAL. Hardest and most popular of all Figs. Can be grown far outside the usual limits of culture; prolific. Medium size; light violet with bloom; sweet and excellent.

EVERBEARING. This is a wonderful new Fig—one that you should by all means include in your orchard or garden. Early and prolific bearer, ripening large, delicious, straw-colored fruit from July until frost.

3-4 ft., \$1.75 each; 10 rate, \$1.60 each

2-3 ft., \$1.25 each; 10 rate, \$1.10 each



Everbearing Fig

Special Types

NEW SEEDLESS CONCORD

After years of experimentation and cross breeding, a perfectly hardy Seedless Grape has been developed—the first of a new strain of Grapes which should eventually replace the seeded varieties. Of the Concord type, but slightly smaller. Blue-black in color, possessing the same fine flavor found in the Concord Grape. 2 yr., \$1.50 each; 10 rate, \$1.25 each.

GOLDEN MUSCAT

At last we have a new, hardy California Muscat which can be grown throughout the East and South, where the old Muscats are not hardy. The golden berries are large, form a compact bunch, and are very attractive. The quality is the best, the fruit being meaty, with a Muscat aroma. 2 yr., \$1.50 each; 10 rate, \$1.25 each.

SCUPPERNONG

White Scuppernon. The Grape of the South, but not hardy in all parts of Virginia, its culture being limited to the eastern coast; sparingly planted as far north as New Jersey; generally grown throughout the South. The Muscadine type does not grow in large, compact bunches, like the Concord, but the berries are larger and extremely popular for home use in the South. It is easily grown and less susceptible to the enemies common to other varieties. Large, white, juicy and most popular of this type. September.

• **James.** A Black Scuppernon. Extra large berries, as much as 3½ in. in circumference and of even better quality than the White Scuppernon. Extremely prolific. Ripens in September, often hanging on until November.

Scuppernon Varieties:

2 yr., \$1.25 each; 10 rate, \$1.00 each

GRAPES

The city lot does not always afford sufficient room for all the tree fruits for home use, but no lot is too small to prevent growing sufficient Grapes for home use. An arbor may be trained over the walkway to the garage, the vines may be trained on outbuildings, the fence, or even on a trellis, affording a screen. Our large assortment of varieties will furnish Grapes of different classes, ripening throughout the season. Grapes start bearing early—usually the second year after being planted—are generally annual bearers, and are easily grown.



Golden Muscat

New Varieties

From this group of improved varieties a selection can be made to considerably extend the Grape season and to include Grapes of better quality.

***CACO.** A new red wine Grape having a peculiar Grape flavor which makes excellent wine and Grape juice. It is also delicious to serve raw, fresh from the vine. Berries large, sweet, prolific bearer.

***CHAMPAGNE.** This variety has made an especially good showing in our test vineyard, producing enormous sized bunches of large, greenish white Grapes which have a delicious flavor and hang on the vines until late in the season. Prolific.

***FREDONIA.** A new, early blue Grape of the Concord type, ripening more than two weeks earlier. Sweet; firm bunches, good shipper. Thick skin and less subject to attack by bees.

***LUCILE.** A large, red Grape of excellent quality. Very sweet; prolific bearer. An excellent home variety, possibly a little tender for commercial purposes.

***ONTARIO.** An improved new white Grape of the Niagara type. Extends the season by hanging on the vine later. Very sweet, delicious flavor. Prolific.

***PORTLAND.** A new, early white Grape of the Niagara type. Vine a vigorous grower; bunches and berries larger than the White Niagara, maturing earlier.

***SHERIDAN.** A new, blue Grape of the Concord type, ripening later, extending the Concord season. Vines just as hardy, as vigorous, and productive; sweeter and richer in quality.

WORDEN. Large, black, early Grape of Concord type. Precedes the Concord by 10 days. Good quality.

Prices of New Varieties:

	1 to 5 Each	5 to 10 Each	10 to 50 Each	50 to 100 Each
2 year.....	\$0.65	\$0.55	\$0.40	\$0.35
1 year.....	.50	.40	.30	.25

*NOTE—Varieties indicated by * can be furnished in 10 year, bearing sized vines at \$6.00 each

Standard Varieties

Do not let the prices of the Grapes in this group mislead you into believing that these varieties are not good. This group contains the best of the standard varieties found in most vineyards of the East, as well as in the home orchard.

BRIGHTON. An early, dark red Grape. Medium size; thin skin, flesh tender, sweet and of the best quality.

***CATAWBA.** A popular, oldtime, late red wine Grape. Rich, aromatic, wine flavor.

***CONCORD.** Most popular and most extensively planted of all Grapes. Blue, large bunches, medium size berries. We advise planting along with the Concord other varieties which will extend the season and furnish a variety.

DELAWARE. An early red Grape; bunches and berries small; excellent flavor and popular in the home vineyard.

***LUTIE.** Very sweet, attractive, red Grape. Large, compact bunches; thin skin, tender flesh. So sweet that it preserves itself on the vine, the juice condensing to syrup. Midseason.

***MOORE'S EARLY.** Blue Grape of the Concord type; two weeks earlier; berries larger than the Concord and bunches slightly smaller. A good shipper and profitable market variety as well as popular for home use. Early bearer.

***WHITE NIAGARA.** An old favorite, the best known of the white varieties; serves as a standard among the whites as the Concord does among the blues. Berries and bunches large; does not crack easily and hangs on the vine well after ripening.

PRICES OF STANDARD VARIETIES

	1 to 5 Each	5 to 10 Each	10 to 50 Each	50 to 100 Each
2 year.....	\$0.50	\$0.40	\$0.30	\$0.25
1 year.....	.40	.35	.25	.20

*NOTE—Varieties indicated by * can be furnished in 10 year, bearing sized vines at \$5.00 each



Seedless Concord

Luscious BERRIES

Food rationing and the Victory Garden program have made berries a vital part of the home garden. Farmers who have an abundance of space seldom grew sufficient berries for family use. The city home owner on a 50-foot lot—having a wonderful opportunity of growing fruit for his own table—also neglected utilizing same. Home owners are now planting more berries and enjoying more fruit at less expense than ever before. Furthermore, they are deriving a lot of satisfaction from growing and harvesting fresh fruit on their own property.

RASPBERRIES

This delicious, useful fruit is divided into two distinct classes—the Blackcaps and Reds.

Blackcaps

CUMBERLAND. Outstanding among the Blackcaps; the standard commercial variety as well as popular in the home garden. Large, purplish black, prolific. Firm, good quality. Midseason.

LOGAN. A new Blackcap. Early, ripening one week ahead of the Cumberland, heavy yielder. Large, glossy black. Resistant to the common diseases to which other Blackcaps are subject. An excellent companion to the Cumberland, extending the Blackcap season.

Standard Reds

CHIEF. A sport of the famous Latham, but 10 days earlier, extending the season. Large, firm; heavy yielder. Good quality.

LATHAM. Brilliant red, mosaic free. Good shipper, as well as useful for canning. The most extensively planted Red Raspberry.

Prices of Blackcaps and Standard Reds:

\$2.00 per 12, \$3.25 per 25, \$5.50 per 50, \$9.75 per 100, \$24.00 per 300



Latham

BLACKBERRIES

ELDORADO. Best known, most popular, hardiest, sweetest Blackberry. Large, black berries borne in clusters; practically coreless. Extensively planted both commercially and for home use. Prolific and profitable. Early.

BLOWERS. Large, glossy black berries, which grow in clusters; melting sweet, excellent flavor, prolific. Midseason.

Blackberry Prices:

\$2.00 per 12, \$3.25 per 25, \$5.50 per 50, \$9.75 per 100, \$24.00 per 300

LUCRETIA DEWBERRIES

Often referred to as a low-growing Blackberry. There are several varieties of Dewberries; the Lucretia is the most popular and satisfactory. The fruit is large, often measuring 1½ inches in length; sweet, highly flavored.

\$2.00 per 12, \$3.25 per 25, \$5.50 per 50, \$9.75 per 100, \$24.00 per 300



Black Raspberry, Cumberland

New Reds

INDIAN SUMMER

(Everbearing)

A new, early, Everbearing Raspberry which is not only among the best Reds, producing a crop in the Spring, but repeats during the Fall. Large, conical, firm, excellent quality. This new berry was introduced by the New York Experiment Station and is now being planted throughout the East.

SUNRISE

A new early Red Raspberry introduced by the United States Department of Agriculture. Very early, with a long picking season, which makes it ideal for the home garden. Hardy; flavor and quality the best.

Prices of New Reds:

\$2.40 per 12, \$4.00 per 25, \$6.50 per 50, \$11.00 per 100, \$27.50 per 300



Eldorado Blackberry

NEW GIANT

Boysenberry

13



Within the past few years wonders have been accomplished in cross breeding and selecting outstanding specimens of fruits. Among the greatest accomplishments in cross breeding is the Famous Boysenberry, often referred to as the Wonder Berry. A hybrid fruit produced by crossing Raspberry, Blackberry and Loganberry. It is more vigorous than any of its parents. Immense in size and when you taste it, you will agree that in flavor it stands supreme. Berries measure as much as 2 inches in length. Yields of as much as six tons per acre are reported. Commercially, it outsells all berries on the market, but its greatest value is its qualities adapting it to home use. Delicious when served fresh, with sugar and cream; wonderful for canning; makes excellent pies when fresh, canned or frozen; makes good jam which is quite conspicuous because of the absence of many of the seeds found in other berries, as the Boysenberry is almost seedless. Color, a pleasing, purplish wine. July.

We recommend planting Boysenberries 6 feet apart in rows 8 feet wide, requiring 900 plants per acre. They may be trained to wires or left on the ground.

\$1.30 per 6, \$2.25 per 12, \$3.75 per 25, \$6.50 per 50,
\$11.00 per 100, \$30.00 per 300

Improved Thornless Boysenberry

Same as the old strain with the exception that the vines are thornless, saving pricked fingers and snagged hose, which are generally associated with the thorny varieties of berries. Ripens 10 days to two weeks ahead of the Standard, extending the season.

\$2.00 per 6, \$3.00 per 12, \$4.50 per 25, \$8.00 per 50,
\$13.50 per 100, \$35.00 per 300

Youngberries

Another new hybrid fruit produced as a result of crossing the Dewberry and Loganberry. Fruit large, purplish wine in color, delicious and sweet. Enormous yield, counted in tons instead of gallons or crates. Planted the same distance and cultivated in the same manner as Boysenberries.

\$1.30 per 6, \$2.25 per 12, \$3.75 per 25, \$6.50 per 50,
\$11.00 per 100, \$30.00 per 300

Washington Asparagus

1 yr. crowns, \$2.50 per 50,
\$4.50 per 100, \$9.00 per 250,
\$14.00 per 500, \$25.00 per 1000

(See page 15 for prices on 2 yr. crowns)

April 29, 1943

Thank you for filling my order so well, for sending such nice trees.

(Signed) Dr. Loren Guy
40 E. 62nd St.
New York City

March 29, 1943

I am enclosing my check for \$73.75 to cover your invoice of February 18.

I wish to compliment you on this shipment. All items looked fine and have now been set out.

(Signed) D. H. Dillard
Lynchburg, Virginia

November 2, 1942

Please send me one of your Catalogues of trees and flowers. We have gotten some trees from you and like them very much.

(Signed) Mrs. T. C. Kevitt
Culpeper, Virginia



Blueberries

Possibly no fruit has undergone within the past few years greater improvement than the Blueberry. Improved, named varieties now offered are the result of cross breeding the native, wild Blueberries, which are now miniature berries compared with the improved strains. Improved, cultivated Blueberries grow in large clusters, are plump, tender, and practically seedless. There is a big market for these delicious Blueberries, which are profitable.

In addition to bearing a large crop, the Blueberry is an attractive ornamental shrub for the lawn or garden.

Blueberries require an acid soil, containing an abundance of humus. If your soil is deficient in humus and acid, we recommend making a heavy application of peat moss, rotted sawdust, decayed leaves, or something of that nature. **Rio-Za-Grow** is an ideal soil conditioner for Blueberries.

We can furnish this delicious fruit in an assortment of the most popular varieties—including **Cabot**, **Jersey**, **Pioneer**, and **Rubel**. We recommend ordering assorted varieties so they will cross pollinate and fruit freely. July and August.

3 year plants \$1.75 each, \$18.00 per dozen
4 year, 18-24 in. plants . . . \$2.25 each, \$24.00 per dozen

Strawberries

No fruit is found in more gardens than the Strawberry, which can be successfully grown in almost all soils and climates requiring little attention other than keeping the beds free of weeds. It, however, responds to fertilization and culture. A lot of delicious fruit can be obtained from a very small section of your garden.

Strawberries may be had in an assortment of varieties, but we do not recommend more than a sufficient number of varieties to cover the season and furnish proper pollination. The following varieties will enable you to make a selection that will furnish berries of the highest quality throughout the Strawberry season.

NOTE—Strawberries are put up 25 plants to the bunch and are not offered in smaller quantities than 25, or in broken bunches.

PARCEL POST SHIPMENTS OF STRAWBERRIES

Our Strawberry Plants are sold f.o.b. our shipping point, but can often be shipped to the best advantage by Parcel Post. It is impossible to estimate in advance exactly what the postage will be, but if you would like your plants shipped by Parcel Post, advise, and we will do so, and you may remit whatever postage the package shows.



... Two Outstanding Strawberries ...

MAJESTIC

A new, patented variety which originated in Virginia, but its popularity has now spread throughout the East due to its enormous yield, having made an average yield of more than double other leading varieties in the various State Experiment Station tests. Extremely large, rich bright red; firm and long distance shipper. If your space is limited, plant the Majestic and obtain the maximum yield; or if you are growing berries commercially, plant the Majestic and reap a really handsome profit. One of the few Strawberries ever to be honored with a United States patent, which it well deserves. *Medium early.*

\$2.25 per 50, \$4.00 per 100, \$8.00 per 250, \$14.00 per 500,
\$25.00 per 1000

GEM

EVERBEARING GIANT

Even without its everbearing qualities, the Gem is a good berry, making in the Spring a normal yield of firm, sweet, large, glossy, dark red berries, and then repeating in the Fall, when berries are more or less a novelty and can be marketed at fancy prices or served on the home table.

\$2.25 per 50, \$4.00 per 100, \$8.00 per 250,
\$14.00 per 500, \$25.00 per 1000

Standard Varieties of Strawberries

AROMA. An old variety which continues to be one of the best of its season. Firm, bright red, medium to large, good shipper, sweet and delicious. Hardy, seldom being killed by frost. Late.

BLAKEMORE. A large, firm, early berry of good quality. Excellent shipper, ranking at the top as a commercial berry; also one of the best home garden varieties, due to its earliness, hardiness and fruit of excellent quality.

DORSETT. A new variety introduced by the United States Department of Agriculture. Conical in shape, bright red, similar to Blakemore but not quite as firm and as extensively planted. Early.

FAIRFAX. A companion to the Dorsett. Also introduced by the United States Department of Agriculture. Large, bright red. Retains its flavor well after being picked. Fruiting season extends over a long period. Early.

KLONDYKE. An old southern variety which has survived the test and competition from many newer berries. Medium to large, firm. A sure cropper, a prolific bearer. Early.

PREMIER. One of the best known of the early, commercial varieties, being large, of good quality, firm shipper. One of the most popular home garden varieties. Its excellent appearance sells it on sight while its unusually good quality calls for more.

Prices of Standard Varieties:
\$2.75 per 100, \$5.50 per 250,
\$9.00 per 500, \$16.00 per 1000

Majestic





Asparagus

ASPARAGUS

We cannot imagine any plant more easily grown than Asparagus, its chief requirement being a deep, fertile soil.

When grown commercially, Asparagus is planted in rows 3 to 4 feet and 12 to 18 inches apart in the row. When grown for home use, it may be planted in a bed or border.

We grow and offer exclusively the **New, Pedigreed WASHINGTON Variety**, which is resistant to rust.

100 plants will furnish your table with fresh Asparagus tips for six weeks in early Spring.
2 yr. field grown roots, \$1.75 per 25, \$2.50 per 50, \$4.50 per 100, \$8.00 per 250, \$13.50 per 500, \$24.00 per 1000

Herbs and Garden Roots

In Colonial Days the average American home considered its Herb Garden just as important and essential as the Vegetable Garden, but the Herb Garden has gradually been neglected, and until recently, almost forgotten—the housewife depending on the grocery store shelves for food seasonings and extracts, many of which were imported from foreign countries. The war suddenly cut off the source of supply, reviving American interest in Herb and Vegetable Gardening. A supply of choice herbs in the home enables the housewife to convert into wholesome dishes many foods which otherwise would not be consumed. It is not only economy to grow Herbs for the table, but convenient and a source of satisfaction.

- CHIVES.** Mild, Onion-like flavor. Used for soups and salads.
- HORSERADISH.** Well known, popular seasoning for meats and used as a relish. Grates fine and tender.
- PEPPERMINT.** Leaves and tender tops used for cooling drinks and for flavoring.
- SPEARMINT.** Used chiefly for iced drinks and juleps.
- SAGE.** An old-time Herb which is still much in demand for seasoning meats. Also a very popular commercial crop.
- TARRAGON.** Used in salads and in making vinegar. Delicious in jello and fruit cups.
- THYME.** Seasoning plant and also a lovely ground cover frequently planted in the rock garden or perennial border.
- WATERCRESS.** Spicy leaves used for flavoring sandwiches and salads. Also affords one of the best Winter and early Spring cooking greens. Plant in small streams or pools.

Prices on above Herbs and Garden Roots:
25c. each, \$2.50 per dozen, \$18.00 per 100



Rhubarb

RHUBARB

It would be difficult to conceive a garden vegetable offering more food value for the cost and effort than Rhubarb, which prefers a deep, fertile soil, but requires very little attention. Produces delicious food in the early Spring when garden vegetables are scarce. We offer the **Victoria**, which has enormous long stalks of cherry red color; very tender. Plant 3 to 4 feet apart in rows or beds. No. 1 roots, 30c. each, \$3.00 per doz., \$20.00 per 100

NUT TREES

At one time the wild, native nuts, in an assortment of varieties, could be harvested in almost all timbered sections of the East, but this is no longer possible. The American Sweet Chestnut was wiped out by the Chestnut blight. The American Shellbark Hickory Nut has been cut for wood and even the American Black Walnut—which is one of the most valuable timber trees—has been practically eliminated as a native tree. So if we are to enjoy native nuts, it is necessary to cultivate them, just as we are now cultivating fruits and farm crops.

BLACK WALNUT. Of course, every planter is familiar with the Native Black Walnut. However, not all are familiar with the possibilities that the culture of the Black Walnut offers. As a timber proposition, Black Walnut culture is extremely profitable, especially when planted on land where it can be left to grow and at the same time used as pasture, as the Black Walnut does not interfere with the grass, which thrives under the trees, and when established, the trees make good shade for livestock, which does not injure them. We offer root pruned, transplanted trees as follows: 2-3 ft. 75c. each, \$7.50 per doz., \$60.00 per 100; 3-4 ft. \$1.00 each, \$10.00 per doz., \$75.00 per 100; 4-6 ft. \$1.50 each, \$15.00 per doz.; 6-8 ft. \$2.00 each, \$20.00 per doz.; 8-10 ft., \$3.00 each, \$30.00 per doz.

BLACK WALNUT, THOMAS IMPROVED. Grafted. Large, thin shell, early bearing strain. 3-4 ft. \$3.00 each, \$30.00 per doz.

*** BLIGHT RESISTANT CHINESE CHESTNUT.** Most remarkable thing about this Chinese strain of blight resistant Chestnut is its early bearing qualities. 3-4 ft. trees often bear full crops in the nursery row. The nuts closely resemble the Native American Sweet Chestnut, which is a thing of the past. Hardy, prolific bearer. 2-3 ft. \$2.00 each, \$20.00 per doz.; 3-4 ft. \$2.50 each, \$25.00 per doz.

ENGLISH WALNUT. As a commercial crop proposition, the English Walnut ranks at the top, being one of the nuts which can be profitably grown commercially in this section. Further description is not necessary as the English Walnuts we offer are the same as the Pacific Coast grown found in local grocery stores. They apparently thrive just as well here as in any other section where they are a profitable commercial crop. Now being planted in this area both commercially and for home use. We offer the Virginia Thin Shell variety. 18-24 in. \$1.20 each, \$12.00 per doz.; 2-3 ft. \$1.75 each, \$18.00 per doz.; 3-4 ft. \$2.50 each.



English Walnuts

- * FILBERT (HAZELNUT).** A native, hardy nut; attractive, shrublike tree planted for both the nuts and ornamental effect. 3-4 ft. \$2.25 each, \$24.00 per doz
- * ORIENTAL WALNUT.** A rapid-growing tree, early bearer, producing nuts resembling the White Walnut. 3-4 ft. \$1.00 each, \$10.00 per doz.; 4-6 ft. \$1.25 each, \$12.00 per doz.; 6-8 ft. \$2.00 each, \$20.00 per doz.; 8-10 ft. \$3.00 each, \$30.00 per doz.

PECANS

Virginia is located in the northern end of the Pecan growing section and its culture is not recommended here or north of Virginia as a commercial crop but almost every home owner desires a few trees for supplying home requirements possibly using same for shade and ornamental effect. Of course our customers south of Virginia plant Pecans for both commercial and home use.

There are many varieties of Pecans but we attempt to offer only carefully selected, satisfactory varieties in the area we serve.

- MAHAN.** New, early bearing variety; largest of all. Frequently reported to start bearing in 3 or 4 years after being transplanted. Quality the best. 4-6 ft. \$5.00 each, \$50.00 per doz.
- PAPER SHELL.** Medium to large, thin shell, nuts of good quality; one of most satisfactory for this area. 2-3 ft. \$1.50 each, \$15.00 per doz.; 3-4 ft. \$2.00 each, \$20.00 per doz.
- STUART.** Possibly the best known and most extensively planted of all Pecans because of its adaptability to a wide range of culture. Can be grown in the deep south and as far north as any of the southern varieties. As the Mahan becomes better known, it is gaining rapidly on Stuart in popularity.

2-3 ft. \$2.25 each, \$22.50 per doz.; 3-4 ft. \$3.00 each, \$30.00 per doz.;
4-5 ft. \$3.50 each, \$35.00 per doz.



Mahan Pecan

Ornamental and Landscape Department

It is not possible at this time to build a home without much inconvenience and delay, but you can improve the appearance of the old home by modernizing your planting. No doubt many new varieties have been made available since the old planting was made and some of the old shrubs and trees have served their usefulness. So great improvement could be accomplished by remodeling and reviving the old planting—putting in newer and better varieties, properly arranged.



SHRUBS

This important class of plant material has many uses in modern planting. We can hardly conceive a garden without a shrub border, some specimens, and possibly the low growing types used in the foundation planting. Improvements in varieties have extended the blooming season, as well as afforded a more beautiful combination of colors. Shrubs, as a rule, are inexpensive, easily transplanted and grown. We offer the following collection of choice varieties.

ALMOND FLOWERING (*Prunus japonica florepleno*). Dwarf shrub. Double pink flowers appearing in Spring in masses, covering the plant. 18-24 in. 85c., each; 2-3 ft., \$1.25 each.

ALTHAEA — ROSE-OF-SHARON (*Hibiscus syriacus*). While the Althaea is an old shrub, few realize and appreciate its usefulness and beauty. At its best at a time when the shrub border most needs a touch of color, blossoming in July and continuing until frost. An ideal shrub for backgrounds or shrub borders. Grows to a height of 6 to 8 ft., branched from the ground, but can be trained into a small tree. We offer Althaea in both Double and Single in the following colors: Pink, Purple, Red, and White, and also Single Lavender. 2-3 ft. 75c. each, \$7.50 per dozen; 3-4 ft. \$1.00 each, \$10.00 per dozen; 4-5 ft. \$1.75 each, \$17.50 per dozen.

ALTHAEA coelestis. A new, single blue. More dwarf than the old variety, but most outstanding because of its clear blue flowers resembling in color the Morning Glory. (See illustration.) 18-24 in. 75c. each, 2-3 ft. \$1.00 each.

ARALIA, FIVE-LEAVED (*Acanthopanax pentaphyllum*). 6 to 8 ft. A hardy shrub. Planted chiefly for its hardiness and attractive foliage. 2-3 ft. 75c. each, 3-4 ft. \$1.25 each.

ARROW-WOOD (*Viburnum dentatum*). 10 to 15 ft. Large white flowers, blue berries; beautiful Autumn-colored foliage. Thrives in damp soil. 2-3 ft. 75c. each 3-4 ft. \$1.25 each.

ABELIA grandiflora

One of the most beautiful and useful of all shrubs. Glossy foliage which is evergreen in Virginia excepting severe Winters—making it eligible for classification as a broad-leaved evergreen, as well as a shrub. So we are listing it under both shrubs and broad-leaved evergreens. Grows to a height of 4 to 6 feet making it ideal for foundation planting; also used for hedges and shrub borders. Small, light pink, tubular blossoms appear in July and continue until frost. One of the most beautiful flowering shrubs, blooming at a season when few shrubs are in blossom. Hardy as far north as Philadelphia. When offered as a shrub, it is dug without ball. (See illustration.) 18-24 in., \$1.00 each, \$10.00 per dozen; 2-3 ft., \$1.50 each, \$15.00 per dozen. For balled and burlapped, specimen plants, see **Broad-leaved Evergreens**.

BARBERRY, RED - LEAVED (*Berberis atropurpurea*). A sport of the well known Barberry thunbergi, differing by having bright red foliage, corresponding to the Red-leaved Maple. Yellow blossoms followed by red berries in the Fall which hang on well into the Winter. (See illustrations.) Grows 4 to 5 ft. 15-18 in. 60c. each, \$6.00 per dozen; 18-24 in. 80c. each, \$8.00 per dozen; 2-3 ft. \$1.00 each, \$10.00 doz.

BARBERRY thunbergi (*Berberis thunbergi*). Too well known to require a detailed description as this popular shrub is found in almost every planting. 3 yr. 15-18 in. 60c. each, \$6.00 per dozen, \$35.00 per 100; 4 yr. 18-24 in. 75c. each, \$7.50 per dozen; \$50.00 per 100; 5 yr. 2-3 ft. 85c. each, \$8.50 per dozen.



Althaea Coelestis



Abelia

BEAUTYBUSH (*Kolkwitzia amabilis*). 5 to 6 ft. A new shrub which has great possibilities. Deciduous. Resembles *Abelia*, but blooms early in the Spring. May be used in combination with *Abelia* and other shrubs of similar height and habits to furnish blossom throughout the Summer. Long, arching branches covered in the early Spring with masses of pink, tubular blossoms. 18-24 in. \$1.00 each, \$10.00 per dozen; 2-3 ft. \$1.50 each, \$15.00 per dozen.

BUSH HONEYSUCKLE (*Lonicera*). Hardy, easily grown shrubs which have many uses, thriving in both shade and sunlight, furnishing bloom in Spring followed by red berries later in the season. 6 to 8 ft.

Morrowi. Wide-spreading branches producing a profusion of creamy white flowers, followed by bright red berries relished by birds.

Tatarica rubra. One of the few shrubs affording pink flowers in April, followed by bright red berries. Useful in hedges, shrub borders, and backgrounds. 2-3 ft. . . 60c. each, \$6.00 per dozen 3-4 ft. . . 85c. each, \$8.50 per dozen

BUTTERFLY BUSH (*Buddleia*). Quick, bushy growth.

Azure Fairy (*Alternifolia*). 5 to 6 ft. Most hardy and earliest blooming of the *Buddleias*. A weeping fountain of beauty. Drooping lilac-colored flowering spikes, as much as 2 ft. Worthy of a place in the better gardens. 2-3 ft. 85c. each; 3-4 ft. \$1.25 each, 4-6 ft. \$1.75 each.

Charming (New Pink Butterfly Bush). Similar in habits of growth to the *Magnifica*, but blossoms are the nearest to a pink of any known variety. (See illustration.) 2 yr. \$1.00 each.

Dubonnet. A new, reddish purple. Similar to *Ile de France*, but a somewhat more vigorous grower. (See illustration.) 2 yr. \$1.00 each.

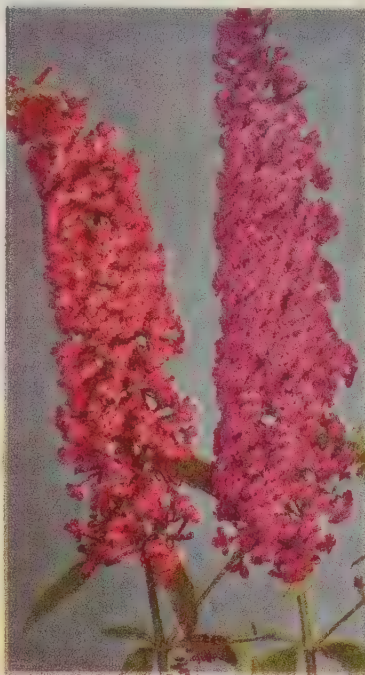
Magnifica. The old lilac-purple *Buddleia*. Too well known to require detailed description. 3 yr. 75c. each.

CHINESE BEAUTYBERRY (*Callicarpa purpurea*). 2 to 4 ft. Graceful, dwarf shrub. White flowers during July and August, followed by masses of purple berries, making it an important berried plant. 2-3 ft. 75c. each, \$7.50 per dozen.

CORALBERRY, New, Chenaulti (*Symphoricarpos chenaulti*). 3 to 4 ft. Useful, dwarf-like shrub which can be grown in almost any kind of soil or location. Somewhat weeping. Light pink flowers in early Summer followed by coral berries which hang on well into the Winter. Hardy, easily transplanted. 2-3 ft. 60c. each, \$6.00 per dozen, 3-4 ft. 85c. each, \$8.50 per dozen.

COTONEASTER *divaricata* (Spreading Cotonaster). From China. Grows 5 to 6 ft. high, graceful, spreading habit. Small, green, polished leaves, red, egg-shaped fruit. Glorious scarlet Autumn tints. 2-3 ft. \$1.25 each, \$12.50 per dozen.

CRANBERRY BUSH (*Viburnum americanum*). 8 to 9 ft. Often referred to as Highbush Cranberry. White flowers followed by orange-red berries during late Summer. One of the best berry-bearing shrubs. 2-3 ft. 75c. each, \$7.50 per dozen.



Buddleia—Charming, Dubonnet



Red Leaved Barberry

DOGWOOD, Golden Stem (*Cornus stolonifera lutea*). 6 to 7 ft. A useful shrub because of its golden branches which are quite ornamental during the dormant season. Its white flowers are followed by white berries which make it useful as both a flowering and berried shrub. 2-3 ft. 75c. each, \$7.50 per dozen.

DOGWOOD, Red Stem (*Cornus stolonifera*). 6 to 8 ft. Spreading shrub with bright reddish purple branches which are quite ornamental during the Winter months. Creamy white flowers in dense clusters followed by white berries making it a useful year-round shrub. 2-3 ft. 75c. each, \$7.50 per dozen; 3-4 ft. \$1.00 each, \$10.00 per dozen; 4-5 ft. \$1.50 each; 6-7 ft. specimen plants, \$3.00 each.

ELDER, AMERICAN (*Sambucus canadensis*). 8 to 9 ft. Clusters of fragrant, white flowers in July, followed by black berries which are ornamental until late Fall. 5-6 ft. \$1.50 each, \$15.00 per dozen.

EUONYMUS *alatus* (Winged Burningbush). 6 to 8 ft. Unusual shrub. Upright, dwarf habit, compact, horizontal, spreading branches with a unique, cork-winged growth; tiny, chocolate colored flowers, followed by red berries. Beautiful scarlet Autumn tints. 2-3 ft. 85c. each, \$8.50 per dozen.

Crapemyrtle (*Lagerstroemia indica*)

Fifteen to twenty feet. May be had in assorted colors; blooms from July until frost. While it has been known to stand temperatures of as much as 15 degrees below zero, it is not considered entirely hardy. However, it can be grown most successfully and is a beautiful shrub in the eastern part of Virginia, Washington, D. C. and along the Atlantic Seacoast even farther north. Throughout the South the Crapemyrtle ranks at the top as a flowering shrub, growing to be much larger and being longer lived than in this area. This beautiful shrub may be had in **Pink, Watermelon Red, Purple and White**. It is more difficult to transplant than most shrubs; should be pruned back severely when transplanted, and given plenty of time to start new growth. (See illustration.) Spring planting recommended. 2-3 ft. \$1.25 each, \$12.50 per dozen; 3-4 ft. B&B, \$3.75 each; 4-5 ft. B&B, \$5.00 each; 5-6 ft. B&B, \$7.50 each; 6-7 ft. B&B, Specimen Plants, \$15.00 each.



Crapemyrtle

DESMODIUM *penduliflorum*. 6 to 7 ft. Bunches of small lavender, clover like blossoms in Sept. and Oct. Useful because of its blooming at a season when there are few flowering shrubs in bloom. 3 yr. plants, 60c. each, \$6.00 per dozen.

DEUTZIA. An old, popular, garden shrub which is now available in a large assortment of improved varieties. We offer the following:

Crenata. 6 to 8 ft. Double pink. Slightly fragrant flowers.

Fortunei. 6 to 8 ft. Pure white flowers.

Pride of Rochester (*Deutzia scabra*). 6 to 8 ft. Fast growing, early. Masses of pink-tinged flowers covering the shrub.

Prices on above varieties of Tall-growing Deutzias: 2-3 ft. 60c. each, \$6.00 per dozen; 3-4 ft. \$1.00 each, \$10.00 per dozen

Gracilis (Slender Deutzia). 2 to 3 ft. One of our best dwarf flowering shrubs; arching branches covered with pure white flowers in April or May. Not as hardy as the taller growing varieties. 12-15 in., 60c. each, \$6.00 per dozen.

Gracilis rosea (Rose Panicked Deutzia). Similar to the *Gracilis*, but pink. 12-15 in. 60c. each, \$6.00 per dozen.



Flowering Quince

HYDRANGEAS

HYDRANGEAS, Hills of Snow (*Hydrangea arborescens grandiflora*). 3 to 4 ft. Pure white, early blooming variety continuing throughout the Summer. Can be grown in full sunlight or partial shade. 18-24 in. 75c. each, \$7.50 per dozen; 2-3 ft. \$1.00 each, \$10.00 per dozen.

Peegee (*Hydrangea paniculata grandiflora*). 6 to 8 ft. An old shrub which continues to be in great demand. Large, white, conical shaped heads appearing in August and remaining intact throughout the season, but turning to a light pink during the Fall. For best results, prune back each Winter. 18-24 in. 75c. each, \$7.50 per dozen; 2-3 ft. \$1.00 each, \$10.00 per dozen; 3-4 ft. \$1.50 each.

Blue Hydrangea

(*HYDRANGEA MACROPHYLLA*)

Used extensively as potted plants, also popular as outdoor garden plants. Especially beautiful in the East, along the seacoast; however, they can be grown in almost all parts of the country provided the soil is kept acid; some protection is desirable where the temperature goes below zero. We recommend during the Winter mounding the earth as is the practice with Roses. Approximately 2 to 3 ft., glossy green foliage. Violet-blue flowers in acid soil; pink in sweet soil. (See illustration.) 2 yr. \$1.20 each, \$12.00 per dozen; 3 yr. \$1.50 each, \$15.00 per dozen.



Blue Hydrangea

FLOWERING QUINCE (*Cydonia japonica*). 4 to 6 ft. Old shrub which is found in almost every garden. Red flowers in early Spring lasting for several weeks, followed by orange-colored fruits which are ornamental and useful for jellies. (See illustration.) 2-3 ft. 75c. each, \$7.50 per dozen; 3-4 ft. \$1.50 each, \$15.00 per dozen.

FORSYTHIA (*Goldenbell*). Average height 6 to 8 ft. A most useful shrub. One of the first flowering shrubs to bloom, covered with yellow, tubular flowers before the foliage appears, and it is an attractive and useful shrub throughout the rest of the year. Often used as hedges, screens, shrub borders and especially useful on steep banks, preventing erosion as it can be grown in almost any kind of soil and climate.

Fortune Forsythia (*Forsythia fortunei*). Vigorous, upright grower; twisted petals.

Green-stemmed Forsythia (*Forsythia viridissima*). Most vigorous. Green bark, dark green foliage. Late.

Showy Border Forsythia (*Forsythia spectabilis*). Newest, most popular and most profuse bloomer. Rich, golden yellow. (See illustration.)

Weeping Forsythia (*Forsythia suspensa*). Excellent as a ground cover for steep banks and for hiding unsightly objects. Beautiful habit of growth and blossoms.

Forsythia Prices: 2-3 ft. 60c. each, \$6.00 per dozen, \$45.00 per 100; 3-4 ft. \$1.00 each, \$10.00 per dozen, \$75.00 per 100

HAWTHORN (*Crataegus*). The Hawthorns somewhat resemble Flowering Crabs, but are usually more compact, rounder shaped trees. Especially useful in large estates, cemeteries and parks. 12 to 18 feet.

Crataegus coccinea (*Thicket Hawthorn*). Large white flowers followed by red fruit in Fall.

Crataegus cordata (*Washington Hawthorn*). Especially noted for its bright red berries. White blossoms in Spring and glossy green foliage throughout the Summer turning to scarlet in Autumn. (See illustration.)

Crataegus crusgali (*Cockspur Thorn*). Also noted for its attractive red berries in Autumn. Compact grower, orange and scarlet Autumn foliage.

Crataegus oxycantha (*English Hawthorn*). Single white flowers, red berries. More dwarf grower and especially suited for the smaller garden; however it may be used in any sized planting.

Hawthorn prices: 3-4 ft. \$1.50 ea., \$15.00 per doz.; 4-5 ft. \$2.50 ea., \$25.00 per doz.; 5-6 ft. B&B, \$6.00 ea.



Forsythia

HYPERICUM aureum (*Golden St. Johnswort*). Low growing shrub affording masses of yellow flowers during July and August. 2 yr. 60c. each, 3 yr. \$1.00 each.



Hawthorn Berries

IBOTA PRIVET (*Ligustrum Ibo*). 8 to 10 ft. White blossoms followed by shiny, blue-black berries which hang on until late Winter. 4-5 ft. \$2.00 each.

JAPANESE BLOODLEAF MAPLE (*Acer palmatum atropurpureum*). 8 to 10 ft. A small Maple with blood red foliage throughout the Summer. 2-3 ft. B&B, \$5.00 each.

JERSEY TEA (*Ceanothus americanus*). 2 to 3 ft. Attractive, dwarf shrub. Prefers shady locations. Sweetly scented white flowers in early Summer. 4 yr. 75c. each, \$7.50 per dozen.

JETBEAD (*Rhodotypos kerrioides*). Compact bush studded with pure white flowers in late Spring, followed by fruits like jet-black beads, which persist throughout the Winter. 2-3 ft. 75c. each, \$7.50 per dozen; 3-4 ft. \$1.00 each, \$10.00 per dozen.

KERRIA japonica flore-pleno. 4 to 6 ft. Bright green stems, dark green foliage and double yellow blossoms all Summer. 18-24 in. 75c. each, \$7.50 per dozen.

LILAC (*SYRINGA*), Hybrid Named Varieties. An old shrub which has lost none of its popularity; in fact, it is more popular than ever, due to the great improvement in varieties, which are numerous. We have carefully made a selection of the choice varieties listed below, from which you can make a selection to fill almost any requirement—affording you Lilacs unsurpassed in beauty and charm.

Belle De Nancy. Double. Pink.

Charles Joly. Double. Reddish purple.

Charles X. Single. Reddish purple.

Doyen Keteleer. Double. Pink.

Jan Van Tol. Considered best single pure white.

Pres. Grevy. Magnificent, large, double blue. (See illustration.)

Pres. Lincoln. Single. Bluish violet.

Rubra de Marley. Single. Reddish purple. One of the best. (See illustration.)

Prices on above named varieties of Lilacs: 18-24 in. \$1.00 each, \$10.00 per dozen; 2-3 ft. \$1.35 each, \$13.50 per dozen

Le Calois. Double. Lilac.

Marie Legraye. Single. White. (See illustration.)

Michel Buchner. Double. Lavender.

Persian. Fragrant lavender. Free bloomer.

LILAC, Common Purple and White (*Syringa vulgaris*). The old-fashioned Lilacs found in almost every garden, regardless of how simple or elaborate. 2-3 ft. 75c. each, \$7.50 per dozen; 3-4 ft. \$1.25 each, \$12.50 per dozen.

MOCKORANGE (*Philadelphus*). An old shrub which has been improved in variety and still has a place in every garden.

Bouquet Blanc (*Philadelphus Bouquet Blanc*). 4 to 5 ft. Semi-double, pure white. Profuse bloomer; dwarf, compact grower. 2-3 ft. \$1.00 each, \$10.00 per dozen.

Sweet (*Philadelphus coronarius*). 8 to 10 ft. A vigorous grower and adapted to either full sunlight or partial shade. Very fragrant, creamy white flowers borne in great profusion. 2-3 ft. 60c. each, \$6.00 per dozen; 3-4 ft. 85c. each, \$8.50 per dozen; 4-6 ft. \$1.25 each, \$12.50 per dozen.

Virginal (*Philadelphus virginalis*). 6 to 8 ft. New. Very fragrant, large, semi-double, pure white flowers in profusion in May and in fewer numbers throughout the Summer. Recommended as the best of all Mockoranges; in fact, one of our best garden shrubs. (See illustration.) 2-3 ft. \$1.00 each, \$10.00 per dozen; 3-4 ft. \$1.35 each, \$13.50 per dozen.

PEARL BUSH (*Exochorda grandiflora*). 8 to 10 ft. A large, fast-growing shrub. Pure white flowers in May. Useful in shrub borders, backgrounds, and as screens. 3-4 ft. 75c. each, \$7.50 per dozen; 4-6 ft., \$1.35 each, \$13.50 per dozen.

PURPLE FRINGE, or SMOKE TREE (*Rhus cotinus*). 10 to 12 ft. Conspicuous, spreading shrub-like tree. Large clusters of round leaves, overhung in Midsummer by mist-like clouds of tiny lavender pink flowers, hanging on for months. 3-4 ft. \$1.35 each, \$13.50 per dozen; 4-6 ft. \$1.75 each, \$17.50 per dozen; 6-8 ft. \$2.00 each.

PUSSY WILLOW (*Salix discolor*). 8 to 10 ft. Frequently found in shrub borders. Also useful as cut flowers when the branches are cut in the early Spring and brought indoors to bloom. 3-4 ft. 75c. each, \$7.50 per dozen; 4-6 ft. \$1.00 each.

ROSEMARY WILLOW (*Salix incana*). 8 to 10 ft. Attractive, slow growing Willow with silvery leaves resembling the Russian Olive. 2-3 ft. 75c. each, \$7.50 per dozen; 3-4 ft. \$1.25 each, \$12.50 per dozen.



Pres. Grevy Marie Legraye Rubra de Marley
HYBRID LILACS



Philadelphus Virginalis

REGEL PRIVET (*Ligustrum regelianum*). 4 to 5 ft. A beautiful shrub which serves a very useful purpose where a low growing plant is required. Very hardy; dark, shiny leaves; graceful, drooping branches. Ideal for covering walls, banks, or a low foundation. 18-24 in. 85c. each, \$8.50 per dozen; 2-3 ft. \$1.25 each, \$12.50 per dozen; 3-4 ft. \$1.60 each.

SNOWBALL, COMMON (*Viburnum opulus sterilis*). 9 to 10 ft. A very satisfactory, hardy shrub with beautiful clusters of globular, white flowers in May. 18-24 in. 75c. each, \$7.50 per dozen; 2-3 ft. \$1.00 each, \$10.00 per dozen; 3-4 ft. \$1.50 each.

SNOWBALL, ORIENTAL (*Viburnum tomentosum plicatum*). 7 to 8 ft. This more dwarf-like type is more extensively used than the old-fashioned Common Snowball. In addition to its big white flowers in June, it has beautiful, glossy green foliage throughout the Summer, turning to a purple in Autumn. (See illustration.) 2-3 ft. \$1.00 each, \$10.00 per dozen; 3-4 ft. \$1.35 each, \$13.50 per dozen.

SNOWBERRY (*Symphoricarpos racemosus*). 4 to 5 ft. Handsome, dark green foliage and a profusion of large white berries in the Fall. Conspicuous in any border planting. 2-3 ft. 75c. each, \$7.50 per dozen.

SPIRAEAS. Useful class of shrubs, available in many varieties. Following varieties are especially useful since they can be used for both small home planting and larger landscape developments. Spiraeas, as a rule, are easily grown, inexpensive, adapted to wide range of soils, and hardy in almost all climates.

Anthony Waterer. 2 ft. Especially useful under windows and along shrub borders, requiring a low growing shrub. Flat, rose pink flower clusters in great numbers in June, smaller numbers during the rest of the Summer. 12-15 in. 60c. each, \$6.00 per dozen; 15-18 in. 85c. each, \$8.50 per dozen.

Billiardi (*Spiraea billiardi*). The Everblooming Spirea. Medium height, 4 to 6 ft. Pink and white flower spikes which are at their best in July, but continue until frost. 2-3 ft. 60c. each, \$6.00 per dozen; 3-4 ft. 85c. each, \$8.50 per dozen.

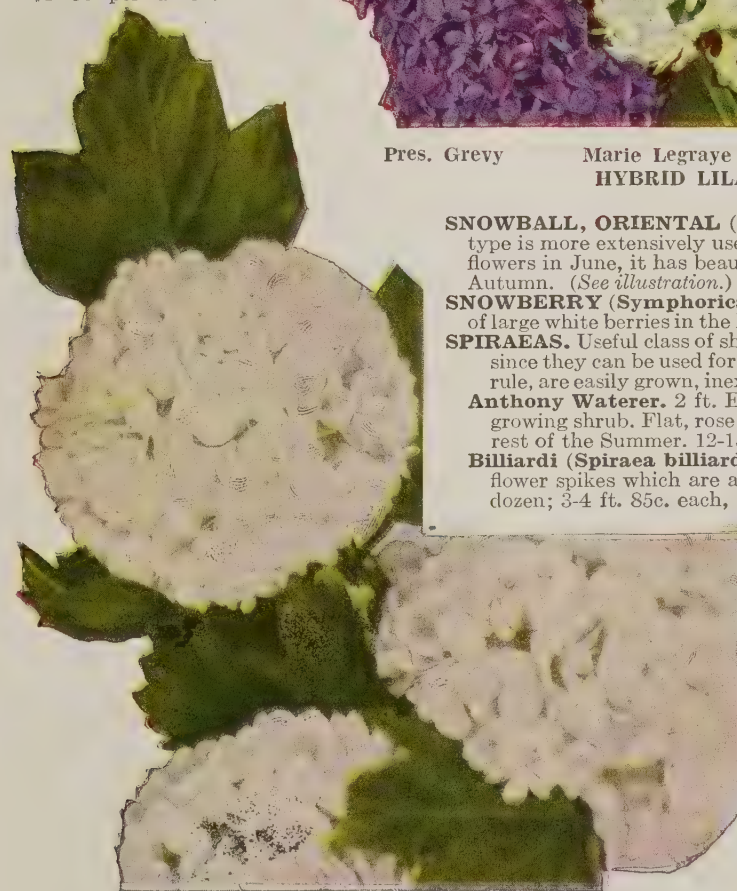
SPIRAEA, BLUE (*Caryopteris incana*). 18 in. Dwarf grower; somewhat perennial-like, since in this locality the tops die back to the ground each Winter, but reappear promptly on the approach of Spring, affording an abundance of pleasing blue flowers throughout the Summer. 3 yr. plants 50c. each, \$5.00 per dozen.

Freobeli (*Spiraea freobeli*). 3 ft. Similar to the Anthony Waterer but a stronger grower. Rose pink flowers in July. 15-18 in. 60c. each, \$6.00 per dozen.

Golden (*Spiraea opulifolius luteus*). 4 to 6 ft. Golden variegated foliage, white flowers in early Spring. 3-4 ft. 75c. each, \$7.50 per dozen.

Korean (*Spiraea trichocarpa*). One of the newer varieties, resembling Vanhouttei, blooming 2 or 3 weeks later, extending the season. Pure white. 2-3 ft. 75c. each, \$7.50 per dozen; 3-4 ft. \$1.00 each, \$10.00 per dozen.

Reeves Double Spirea (*Spiraea reevesiana*). 5 to 6 ft. White flowers borne in clusters along the branches in May. Differs from Vanhouttei by having double flowers and larger foliage. 2-3 ft. 75c. each, \$7.50 per dozen; 3-4 ft. \$1.00 each, \$10.00 per dozen.



Viburnum (Snowball)

SPIRAEA thunbergi (*Spiraea thunbergi*). 4 to 5 ft. A dense, fluffy bush with attractive, green, feather-like foliage, which turns to beautiful colors of orange and red in Autumn. Dainty white flowers; first of the Spireas to blossom in the Spring. 18-24 in. 75c. each, \$7.50 per dozen; 2-3 ft. \$1.00 each, \$10.00 per dozen; 3-4 ft. \$1.35 each, \$13.50 per dozen.

Vanhouttei (*Spiraea vanhouttei*). 6 to 8 ft. At home almost everywhere planted, under the most favorable and unfavorable conditions; medium grower. Often used in foundation plantings, shrub borders, as specimens, and put to numerous other uses. Spreading, attractive shrub, good foliage, and in the early Spring is covered with masses of pure white flowers. 2-3 ft. 60c. each, \$6.00 per dozen; 3-4 ft. 85c. each, \$8.50 per dozen.

SWEET PEPPER BUSH (*Clethra alnifolia*). 4 to 5 ft. Its medium height lends it to many uses in the garden. Spikes of fragrant, white flowers in August and September, when few flowering shrubs are in bloom. 18-24 in. 60c. each, \$6.00 per dozen.

SWEET SHRUB (*Calycanthus floridus*). 4 to 6 ft. An old garden favorite. Dark reddish brown, sweetly scented flowers most numerous in May, but some may be found throughout the rest of the Summer. 2-3 ft. 60c. each, \$6.00 per dozen; 3-4 ft. \$1.00 each, \$10.00 per dozen.

TAMARIX (*Tamarix africana*). 8 to 10 ft. Tall, slender, straggly growing tree with beautiful, feather-like foliage; delicate pink flowers in April. 2-3 ft. 60c. each, \$6.00 per dozen; 3-4 ft. 85c. each, \$8.50 per dozen; 4-6 ft. \$1.35 each, \$13.50 per dozen.

VITEX (*Chaste-tree*). 4 to 5 ft. Large, showy lavender flower spikes appear in July and last until frost. We offer the **Macrophylla**, the large-leaf type; also the **Incisa**, the cut-leaf type. 2-3 ft. 75c. each, \$7.50 per dozen; 3-4 ft. \$1.00 each, \$10.00 per dozen.

WEIGELA (*Weigela*). An old garden shrub, which continues to be in demand; used in gardens of all sizes and designs. Our selection of varieties meets the needs of any garden.

Eva Rathke. 4 to 5 ft. Free bloomer, beginning in June and blooming intermittently until late Fall. Bright red. 18-24 in. 75c. each, \$7.50 per dozen; 2-3 ft. \$1.00 each, \$10.00 per dozen.

Floribunda (*Weigela floribunda*). 7 to 8 ft. A new red, resembling *Rosea* in habit of growth but bright red. One of the better shrubs. (See illustration.) 2-3 ft. 75c. ea., \$7.50 per doz.; 3-4 ft. \$1.25 ea. \$12.50 per doz.

Rosea (*Weigela rosea*). 7 to 8 ft. Best known and most extensively planted of the Pink Weigelas, blooming abundantly in June. 2-3 ft. 60c. each, \$6.00 per dozen, 3-4 ft. 85c. each, \$8.50 per dozen.

WINTER JASMINE (*Jasminum nudiflorum*). Prostrate grower; used for covering banks and walls. Profusion of yellow blossoms in early Spring, usually March. 3 yr. clumps, \$1.00 each, \$10.00 per dozen; 4 yr. clumps, \$1.50 each, \$15.00 per dozen.



Weigela Floribunda



Winterberry

WHITE FRINGE (*Chionanthus virginica*). Very showy shrub, 12 to 15 ft. in height. Large, leathery, shiny leaves; masses of lace-like, drooping, white flowers in May, followed by large purple berries. A native of Virginia, but hardy and easily grown over a wide area. Especially useful near streams, affording a pleasing effect when planted in front of Weeping Willows and other drooping trees. 3-4 ft. \$1.25 each, \$12.50 per dozen; 4-6 ft. \$2.00 each, \$20.00 per dozen.

WINTERBERRY (*Ilex verticillata*). 6 to 8 ft. A deciduous Holly, noted for its bright red, shiny berries used at Christmas time for decorative purposes. For best results, plant in groups of three or more. Hardy from Maine to Florida. (See illustration.) 18-24 in. 60c. each, \$6.00 per dozen; 2-3 ft. \$1.00 each, \$10.00 per dozen; 3-4 ft. \$1.50 each, \$15.00 per dozen.

HEDGE PLANTS

A hedge is ornamental, as well as it affords protection, costing less than metal, wood, or stone fences; requires little attention other than some shearing, which is less expensive than the painting and upkeep of other fences. We especially recommend to you the Evergreen Amur River Privet. However, there are other varieties of plant material which can be used as a hedge.

Planting—For a dense, compact hedge, we recommend 6 inches apart in a single row and pruning back within 2 or 3 inches of the ground at time of planting.

Amur River Privet

(LIGUSTRUM AMURENSE)

The Southern, evergreen type. Just as hardy as the California Privet and more beautiful because it retains its glossy green foliage throughout the average Winter. A rapid, compact grower, making a dense hedge in a short time. May be kept sheared to almost any height from 1 to 8 feet. It may also be used as a screen or background where, if permitted to grow freely, it affords a profusion of white flowers in May and large quantities of shiny, blue berries which hang on throughout Winter. (See illustration.)

	50	100	250	500	1000
1 yr., 12-18 in.	\$4.50	\$8.00	\$17.50	\$32.50	\$60.00
Well branched:					
2 yr., 18-24 in.	8.00	15.00	35.00	67.50	125.00
2 yr., 2-3 ft.	10.00	18.00	42.50	80.00	150.00
3 yr., 3-4 ft.	13.50	25.00	60.00	110.00

California Privet

(LIGUSTRUM OVALIFOLIUM)

One of the oldest and best known of the hedges. Not as extensively used as the Evergreen Amur but planted farther north. Dark, glossy, green foliage somewhat larger than the Amur River; similar in habits of growth, but not evergreen.

	50	100	250	500	1000
2 yr., 18-24 in.	\$8.00	\$15.00	\$35.00	\$67.50	\$125.00
2 yr., 2-3 ft.	10.00	18.00	42.50	80.00	150.00

BARBERRY THUNBERGI

See page 16 for **Barberry thunbergi**, which is also extensively used for hedges.



Privet Hedge

Waynesboro's Choice Evergreens

Evergreens are not only beautiful in Winter when the earth is brown and deciduous trees are barren, but are graceful and effective during the Summer.

ARBORVITAE (Thuja)

There are two distinct types of Arborvitae—the American and Oriental. There are more than 50 varieties of the American, comprising one of the most useful classes of Evergreens. The Arborvitae are hardy, adapted to a wide range of soil and climate, easily transplanted, and have many uses.

AMERICAN TYPES

ARBORVITAE: American (Thuja occidentalis). The mother of this big class. Dark green foliage; pyramidal in form, but more spreading and less compact than the American Pyramidal. Foliage flat and arranged on edge. Useful as a windbreak, screen, or as a specimen. 18-24 in. \$2.25, 2-3 ft. \$3.00, 3-4 ft. \$4.00, 4-5 ft. \$5.00, 5-6 ft. \$6.50, 8-10 ft. specimens \$15.00.

Columbia (Thuja occidentalis, Columbia). A compact, pyramidal type. Light green, silver-like foliage. 5-6 ft. \$6.00, 6-7 ft. \$7.50, 7-8 ft. \$10.00.

Globe (Thuja globosa). One of the most extensively used of the Arborvitae, being a dwarf, compact, globe-shaped grower, making it an ideal Evergreen for foundation planting, for hedges, bordering flower gardens, and numerous other uses. Dark green foliage. (See illustration.) 12 in. \$2.25, 15 in. \$3.00, 18 in. \$4.50.

Golden, or George Peabody (Thuja occidentalis lutea). Resembles the American in habits other than having golden foliage, which makes it useful to give a touch of color when planted in groups with other varieties. 5-6 ft. \$6.00, 6-7 ft. \$7.50, 7-8 ft. \$9.00, 8-10 ft. \$15.00, 10-12 ft. \$22.50.

Pyramidal (Thuja occidentalis pyramidalis). One of the best pyramidal Evergreens and an excellent companion of the Globe when used in foundation plantings, the Pyramidal being used at the corners and other spaces where pyramidal types are required. More slender and compact than the American, requiring no shearing, unless it is necessary to trim to a desired height; in that case, shearing does not detract from the appearance of the plant. (See illustration.) 18-24 in. \$2.25, 2-3 ft. \$3.00, 3-4 ft. \$4.00.

Siberian (Thuja occidentalis wareana). A hardy Russian variety classed under the American because it closely resembles the American types; foliage darker green than the American; more spreading and more dwarf grower. 18-24 in. \$2.50, 2-3 ft. \$3.00, 3-4 ft. \$4.50.

Tom Thumb (Thuja occidentalis ellwangeriana). This little dwarf Evergreen is what the name suggests. Feather-like foliage; globe shape. 12-15 in. \$2.00, 15-18 in. \$2.75.

Vervaeae (Thuja occidentalis vervaeneana). Dwarf, pyramidal grower, hardy. Suitable for foundation planting. 18-24 in. \$3.00, 2-3 ft. \$3.75.

ORIENTAL TYPES

ARBORVITAE: Breckman's Golden (Thuja orientalis aurea nana). The most extensively used of any of this class of Evergreens. Dwarf, compact grower; very pleasing golden-tipped foliage. Most hardy of the Oriental types, being grown throughout the East. (See illustration.) 12-15 in. \$2.25, 15-18 in. \$3.00, 18-24 in. \$4.00, 24-30 in. \$5.00.

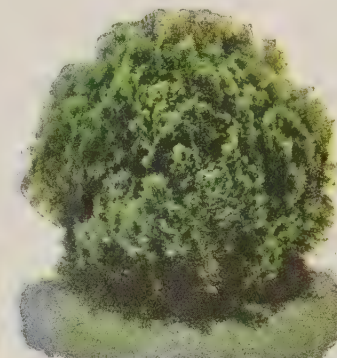
Compact (Thuja orientalis compacta). Semi-dwarf, bright green foliage. Used as screens, specimens, and even in foundation plantings where the space permits. 7-8 ft. \$15.00, 8-10 ft. \$20.00.

Golden Pyramidal (Thuja orientalis pyramidalis aurea). Similar to the Compact but more pyramidal in form, and has golden-tipped foliage. Same sizes and prices.

Spiralis (Thuja orientalis conspicua). A slender, irregular grower. Used in plantings with other varieties because of its peculiar habit of growth. Dark green foliage. 18-24 in. \$2.50, 2-3 ft. \$3.50, 7-8 ft. \$9.00.



Thuja Pyramidalis



Globe Arborvitae



Breckman's Golden Arborvitae



Deodara Cedar

CEDARS

DEODAR (Cedrus deodara).

The famous Cedar of the Himalayan Mountains. Tall, rapid grower with silvery foliage, which makes it most useful for planting in groups; also a beautiful lawn specimen. Not entirely hardy north of Washington, D. C. In its native India often attains a height of 75 ft. (See illustration.) 2-3 ft. \$4.50, 3-4 ft. \$6.00. Write for prices on large specimens.

CEDAR OF LEBANON (Cedrus libani).

One of the most valued forest trees in its native Palestine, where it played a part in Biblical history. Dark green foliage; tall, rapid grower. 6-8 ft. \$9.00, 8-10 ft. \$12.50, 10-12 ft. \$20.00.

A COMPLETE FOUNDATION EVERGREEN PLANTING

Consisting of 8 Selected Evergreens Suitable for the Small Home

- 2 Irish Juniper, 2-3 ft.—For each side of entrance.
- 1 Hemlock, 18-24 in.—For corners of house.
- 2 Savin Juniper, 18-24 in.—At side of Irish Juniper.
- 2 Berckman's Arborvitae, 15-18 in.—Next to Hemlock.

8 CHOICE EVERGREENS
Offered as a Special Group
Planting No. E-21 \$19.75
for only



Canadian Hemlock

FIRS

A group of Evergreens useful in general landscape work, but not as extensively used as the Arborvitae and Junipers. Grow to be large trees and are used in both group plantings and as specimens.

BALSAM (*Abies balsamea*). Dark green foliage. Makes an excellent live Christmas tree which can be lighted and used from year to year. 5-6 ft. \$6.50, 6-8 ft. \$9.00, 8-10 ft. \$15.00, 10-12 ft. \$20.00.

SILVER (*Abies concolor*). Dwarf growing type Fir with silvery foliage, resembling the Blue Spruce. 2-3 ft. \$4.50, 3-4 ft. \$6.00, 4-5 ft. \$9.00, 5-6 ft. \$13.50.

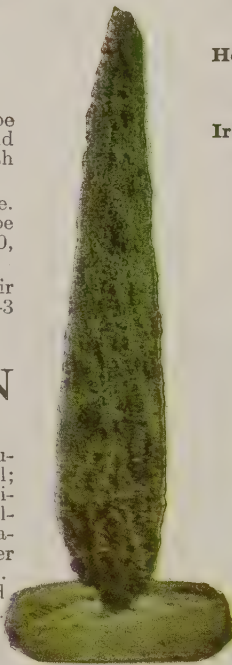
HEMLOCK, CANADIAN

(*Tsuga canadensis*)

Possibly America's most satisfactory and most popular Evergreen. Hardy, adapted to a wide range of soil; strong growers, beautifully shaped trees with good foliage. Easily transplanted and may be kept sheared to almost any desired shape and size. Excellent as a foundation planting tree, to be used at the corners and in other spaces where a taller growing Evergreen is required. Also makes excellent hedge and useful as a background or screen about the garden. (See illustration.) 18-24 in. \$2.50, 2-3 ft. \$3.50, 3-4 ft. \$4.50, 4-5 ft. \$6.00.



Mugho Pine



Irish Juniper

Meyer's (*Juniperus squamata meyeri*). A Chinese, low growing, semi-prostrate variety. An odd, irregular shaped Evergreen with silvery green,

somewhat variegated foliage, which makes it an odd, conspicuous plant in the garden. Approximately 5 ft. when mature. 15-18 in. \$2.00, 18-24 in. \$3.50, 2-3 ft. \$4.50.

Pfitzer's (*Juniperus chinensis pfitzeriana*). Possibly the best known and most extensively planted of all the Junipers, as well as it ranks near the top among all the Evergreens. A low grower, almost prostrate; silvery green foliage. Hardy and adapted to almost all soils, other than a very wet soil, which no Juniper likes. Especially useful in foundation plantings, under windows, in low Evergreen borders, etc. (See illustration.) 15-18 in. \$2.25, 18-24 in. \$3.00, 2-3 ft. \$4.00, 3-4 ft. \$5.00, 5-6 ft. heavy specimens, \$15.00.

Savin (*Juniperus sabina*). Similar to the Pfitzer's but darker green foliage. (See illustration, page 23.) 18-24 in. \$2.50, 2-3 ft. \$3.50, 3-4 ft. \$4.50, 4-5 ft. \$7.50, 5-6 ft. \$12.00.

Virginiana glauca (Blue Juniper). Silvery foliage, similar to the Blue Spruce—making it an ideal Evergreen for planting in groups of green foliage varieties. Pyramidal in type and grows to be a large tree, like the Native Red Cedar; however, it can be kept sheared into a compact specimen of almost any height desired. 2-3 ft. \$3.50, 3-4 ft. \$5.00, 6-7 ft. \$15.00, 7-8 ft. \$17.50.

EVERGREENS

JUNIPERS (*Juniperus*)

The Juniper group comprises one of our most useful families of Evergreens. They may be had in numerous shapes, colors, and textures of foliage, as well as in sizes to meet almost any requirement. The Junipers, as a rule, prefer a rather dry, sunny location. An effective, complete landscape, planting may be made of Junipers, arranged according to height, spread, and color of foliage.

Andorra (*Juniperus communis depressa plumosa*). A compact, prostate grower with beautiful grayish green foliage in Summer, turning to attractive bronze color during the Winter. Hardy, strong grower. 18-24 in. \$2.75, 2-3 ft. \$3.50, 3-4 ft. \$4.50.

Ashford (*Juniperus communis ashfordi*). A columnar type Juniper, similar to the Irish, but having more spread. Silvery green foliage; gracefully drooping. 2-3 ft. \$3.00, 3-4 ft. \$4.50.

Canadian (*Juniperus communis canadensis*). Dwarf, semi-prostrate. Grayish green foliage, attractive throughout the year. 4-5 ft. \$6.00, 5-6 ft. \$8.00.

Columnar (*Juniperus chinensis columnaris*). A Chinese pyramidal or columnar type, having more spread than the Irish; darker green foliage. 3-4 ft. \$4.50, 4-5 ft. \$6.00.

Greek (*Juniperus, excelsa stricta*). Semi-dwarf, massive grower with a spread generally equaling its height. Silvery green foliage. Very hardy. 12-15 in. \$1.75, 15-18 in. \$2.50, 18-24 in. \$3.50.

Horizontalis (*Juniperus horizontalis*). A prostrate grower with dark green foliage. Used for covering banks, stones and other objects which cannot be covered with sod. 2-3 ft. \$3.00, 3-4 ft. \$4.00.

Irish (*Juniperus communis hibernica*). A tall, columnar type with silvery green foliage. Often used at corners and at posts in foundation plantings, where a columnar type is required. Also used in formal gardens, where it can be kept sheared to almost any desired height. A hardy, vigorous grower, easily transplanted. Prefers full sunlight. (See illustration.) 18-24 in. \$2.25, 2-3 ft. \$3.00, 3-4 ft. \$4.00, 4-5 ft. \$5.00.



Pfitzer's Juniper

PINES (Pinus)

Pines are used as screens, backgrounds for gardens, along driveways, groups for framing in buildings, and the small, dwarf Mugho is used in foundation plantings, in beds, at entrances, and in numerous other positions in the garden where low growing Evergreens are required.

AUSTRIAN (Pinus nigra). Attains a height of 50 feet, but is a slow, dwarf grower compared with some. Compact; dark green foliage, long needles. Makes an excellent specimen tree for either large or small estates. 2-3 ft. \$3.50, 3-4 ft. \$4.50.

MUGHO (Pinus montana mughus). An attractive dwarf Pine, seldom growing more than 4 feet in height, the spread even exceeding the height. Especially attractive in early Spring when the new growth starts. (See illustration, page 22.) 12-15 in. \$2.75, 15-18 in. \$3.50, 36-42 in. \$9.00, 42-48 in. \$15.00.

ORIENTAL RED (Pinus resinosa). Long dark green needles; resembles the Austrian, but a faster grower. Makes a very beautiful specimen tree. 3-4 ft. \$3.50, 4-5 ft. \$5.00, 5-6 ft. \$6.50.

SCOTCH (Pinus sylvestris). One of the fastest growing Pines. Bluish green foliage makes it effective as a specimen, but most generally used as screens and in group plantings. (See illustration.) 2-3 ft. \$2.75, 3-4 ft. \$3.50, 4-5 ft. \$4.50, 5-6 ft. \$6.00.

WHITE (Pinus strobus). A native Evergreen with soft, silvery green foliage. Fast grower and one of the most useful and satisfactory Pines. 2-3 ft. \$3.00, 3-4 ft. \$4.00, 4-5 ft. \$5.00, 5-6 ft. \$6.00.

RETINOSPORA

A fast growing class of Evergreens, most of the varieties having soft, feather-like foliage. Easily sheared and transplanted and adapted to many uses.

Filifera (Thread Retinospora). Semi-dwarf. Globe shaped when young, gradually assuming a more pyramidal shape after becoming older. Foliage weeping and effective. 18-24 in. \$2.50, 2-3 ft. \$3.50.

Pisifera (Sawara Retinospora). Fast growing pyramidal type. Soft, feather-like foliage; somewhat weeping. Very hardy. Available only in large, specimen trees. 10-12 ft. \$22.50, 12-15 ft. \$30.00.

Pisifera aurea (Golden Sawara Retinospora). Differs from the Pisifera only by having golden foliage, which makes a contrast when planted in groups with green varieties. 10-12 ft. \$22.50, 12-15 ft. \$30.00.

Plumosa (Plume Retinospora). Similar to the Pisifera, but somewhat finer, softer foliage. 18-24 in. \$2.50, 2-3 ft. \$3.50, 4-6 ft. \$6.00, 6-8 ft. \$9.00, 10-12 ft. specimens, \$22.50.

Squarrosa veitchi (Moss Retinospora). Fine, soft, silvery foliage. Especially attractive when young, but subject to blight when becoming older. 18-24 in. \$2.50, 2-3 ft. \$3.50.

SPRUCE (Picea)

Norway (Picea excelsa). The best known of all the Spruces. Easily transplanted, fast grower and adapted to many uses—including screens, windbreaks, for quick effect in foundation plantings, as specimens, and as live Christmas trees, planted nearby where they can be reached with a wire from the home. (See illustration.) 6-7 ft. \$7.50, 7-8 ft. \$9.00, 8-10 ft. \$12.50, 10-12 ft. \$20.00. Write for quotations on larger sizes.

White (Picea alba). Grows similar to the Norway, but has silvery green foliage. 2-3 ft. \$3.00, 3-4 ft. \$4.00, 4-5 ft. \$6.00, 6-7 ft. \$9.00, 8-10 ft. \$15.00, 10-12 ft. \$22.50.



Norway Spruce



Scotch Pine

YEWS (Taxus)

This very satisfactory class of Evergreens has only recently been given proper recognition. The Yews consist of a large assortment of varieties, making it possible to select types for almost any purpose. They, as a rule, retain their dark green color well throughout the Winter, are hardy, can be grown in full sunlight or partial shade. They are especially useful in foundation plantings where there is some shade.

HICK'S (Taxus hicksi). An upright, columnar type, similar to the Irish Yew, but a faster grower. Very dark green. Hardy. 15-18 in. \$3.50, 18-24 in. \$5.00.

IRISH (Taxus hibernica). Very compact, dwarf, slow growing, columnar type, eventually reaching a height of as much as 15 feet. Ideal for cemetery plots. We offer a limited number of 3-4 ft. specimens at \$15.00.

ORIENTAL DWARF (Taxus cuspidata nana). Very dwarf, low growing, spreading type. 12-15 in. \$4.00, 15-18 in. \$6.00.

ORIENTAL PYRAMIDAL (Taxus cuspidata capitata). Useful in planting at entrance to the garden, beside steps, at corners, and in spaces between windows in foundation plantings, where pyramidal Evergreens are required. 15-18 in. \$3.50, 18-24 in. \$4.50, 24-30 in. \$6.50, 30-36 in. \$7.50.

ORIENTAL SPREADING (Taxus cuspidata). Grows similar to the Pfitzer's Juniper, but has dark green foliage and survives in shade. 15-18 in. \$3.50, 18-24 in. \$4.50, 24-30 in. \$6.50, 30-36 in. \$7.50.



Savin Juniper

Plant An Evergreen Hedge

Coniferous Evergreens make very satisfactory hedges. They, as a rule, require less shearing than Privet Hedges, as well as the varieties used for hedges are hardy and beautiful.

NORWAY SPRUCE

7-8 feet. Balled and burlapped plants, which will make an effective hedge or screen planted 6 feet apart. \$6.00 each in lots of 30 or more.

HEMLOCK

Balled and burlapped. 18-24 in. in lots of 30 or more, \$2.00 each, 2-3 ft. \$2.85, 3-4 ft. \$3.75.

Broad-Leaved Evergreens

No group of Ornamentals has gained more in use and popularity within the past twenty-five years than Broad-leaved Evergreens, which are beautiful twelve months out of the year. Many of them offer a double and triple attraction by flowering and fruiting, the berries remaining on well into the Winter. This large group offers plants of various habits, suitable for many uses, making possible complete plantings exclusively of Broad-leaved Evergreens.

Note—Prices on Broad-leaved Evergreens include Balling and Burlapping with the exception of the smaller sizes of Boxwood.



Azalea Hinodegiri



Azalea Macrantha

AZALEA ledifolia alba. Pure white with large, light green foliage; medium height. **Ledifolia rosea.** Differs from the Ledifolia alba by the blossoms being a light pink. **Macrantha.** Large, salmon red flowers appearing almost a month later than the Hinodegiri, extending the season. Vigorous grower, and one of the most hardy of all Azaleas. (See illustration.)

Prices on Above Varieties of Azaleas:

6-8 in. \$1.20 each, \$12.00 per dozen 10-12 in. \$2.25 each, \$22.50 per dozen
8-10 in. \$1.75 each, \$17.50 per dozen 12-15 in. \$2.75 each, \$27.50 per dozen

BARBERRY, EVERGREEN (Berberis), Julianae. Most popular of the upright, evergreen varieties. Beautiful, large, dark glossy green leaves which turn to an attractive bronze color during the Winter. Very hardy. 15-18 in. \$2.25, 18-24 in. \$3.00.

Sargentii. Similar to the Julianae but somewhat more spreading and does not retain its foliage quite so well. 15-18 in. \$1.50.

Verruculosa. The best of the low growing, dwarf Barberries. Small, light green leaves, silvery underneath. Perfectly hardy. 8-12 in. \$1.50 each, \$15.00 per dozen; 12-15 in. \$2.00 each, \$20.00 per dozen.

BOXWOOD

BOXWOOD, Blue Pyramidal (Buxus sempervirens glauca). This variety is rare, but its tall, pyramidal habit and beautiful, blue green foliage make it sure to become better known and more extensively used. 18-24 in. \$3.50, 24-30 in. \$4.50, 30-36 in. \$6.00.

BOXWOOD, Oriental (Buxus japonica). A fast growing variety with large light green foliage. Especially adapted far South, where the climate is too hot for the other varieties. 24-30 in. \$4.00, 30-36 in. \$6.00, 36-42 in. \$8.00.

CHERRY LAUREL (Prunus laurocerasus). A fast growing small tree with large dark glossy green leaves. White flowers in Spring followed by blue-black berries; can be kept sheared to almost any desired height and shape; not hardy in western part of Virginia. 4-5 ft. \$6.00.

COTONEASTER microphylla. Prostrate; small, dark, evergreen foliage. Less affected by severe Winters than Horizontalis. White flowers followed by bright red berries. 18-24 in. \$3.00, 24-30 in. \$3.75.

ELAEAGNUS pungens fruitlandi (Bronze Elaeagnus). Dark green leaves, silvery beneath; creamy white flowers in Fall. Mysterious, edible fruits ripening during Winter. Useful in Broad-leaved Evergreen foundation plantings, in groups, borders and as specimens. 18-24 in. \$3.00, 2-3 ft. \$3.75.

ENGLISH LAUREL (Laurocerasus rotundifolia). Large, glossy green leaves somewhat resembling the Magnolia grandiflora. Not hardy in western part of Virginia; extensively used in States south of Virginia, in all positions in which a medium growing, Broad-leaved Evergreen is required. 18-24 in. \$2.50, 2-3 ft. \$3.25.

BOXWOOD (Buxus)

The first group of Broad-leaved Evergreens to be extensively used as landscape material in America. The old Boxwood Gardens of Virginia and other states of the South are recognized as being some of the most interesting gardens in America and in normal times were visited annually by thousands of tourists.

Boxwood are long lived, slow to medium growers and beautiful throughout the year. They have many uses in both old and modern gardens; are especially noted for the bordering of driveways, walks, flower beds, and the taller varieties are even used as screens. There are many varieties of Boxwood. We offer the most popular, practical types. (See illustration.)

BOXWOOD, COMMON AMERICAN (Buxus sempervirens)

One of the best known and most extensively used Boxwoods. Dark green foliage. Compact, pyramidal growers when young, flattening out as they become older. Resembles the Dwarf English very closely, but a faster and larger grower. Used in hedges, borders and as specimens.

	Each	Doz.	50	100
4-6 in., 2 yr., from beds.....	\$ 2.00	\$ 6.00	\$10.00	
6-8 in., 4 yr. transplants.....	\$0.35	3.50	10.00	18.00
8-10 in., 5 yr. transplants.....	.45	4.50	16.00	28.00
10-12 in., 6 yr. transplants.....	.65	6.50	24.00	45.00
12-15 in., sheared, B&B.....	1.50	15.00	57.50	110.00
15-18 in., sheared, B&B.....	2.25	22.50	85.00	160.00
18-24 in., sheared, B&B.....	3.00	30.00	115.00	220.00
24-30 in., sheared, B&B.....	4.00	44.00	170.00	330.00
30-36 in., sheared, B&B.....	5.00	55.00		
36-42 in., sheared, B&B.....	7.50	80.00		
42-45 in., sheared, B&B.....	12.00	125.00		

Larger sizes of Boxwood quoted on request

BOXWOOD, DWARF ENGLISH (Buxus suffruticosa)

This is the round-leaved, slow growing, compact variety frequently found on the old estates here in Virginia. Specimens several hundred years old, having a spread of 8 or 10 feet, are still the pride of many of the famous gardens but the enormous prices offered for these old specimens have moved many of them to new homes. We recommend purchasing young plants, permitting them to increase in value as they grow and at same time serve to make your garden more beautiful.

	Each	Doz.	50	100
4-6 in., 2 yr., from beds.....	\$2.50	\$ 7.50	\$12.00	
4-6 in., 4 yr., transplants.....	\$0.35	3.50	10.00	18.00
6-8 in., 5 yr., transplants.....	.45	4.50	16.00	28.00
12-15 in., specimens, B&B.....	2.75	30.00	115.00	220.00
15-18 in., specimens, B&B.....	4.00	44.00	170.00	330.00
18-21 in., specimens, B&B.....	7.50	80.00		
21-24 in., specimens, B&B.....	12.00			



Boxwood Hedge and Specimen

EUONYMUS japonica variegata. Silvery variegated, evergreen foliage. Used in group plantings to give a contrast in color. 18-24 in. \$2.50, 2-3 ft. \$3.00.

Patens. 4 ft. The most satisfactory of all Euonymus. Low, dwarf grower; hardy. White flowers in the Spring, followed by red berries, which remain on until well into the Winter. Makes an excellent foundation plant. 18-24 in. \$2.25, 2-3 ft. \$3.00.

HEATHER, SCOTCH (Calluna vulgaris). An old garden plant made famous through Scotch folk songs and poetry. Useful where a low growing, flowering Evergreen is required. Adapted to dry soils. Midseason purple flowers. 12-15 in. \$1.25, 15-18 in. \$1.75.

HEATH, DWARF (Erica gracilis). 12 in. The Heath means to Ireland what the Heather means to Scotland. It also means much to the American gardener who uses it as a border, an edging for perennial beds, or scattered throughout the rock garden. Beautiful little Evergreen with soft, feathery foliage. Purple, tubular flowers during the Winter, continuing well up into the Spring. 3 yr. plants, 60c. each, \$6.00 per dozen, \$45.00 per 100.

HOLLY (Ilex). Well known, popular group of Broad-leaved Evergreens; useful in garden as well as for Christmas decoration material. Glossy, dark green foliage and red berries; we recommend use of Rho-Za-Grow on Hollies.

American (Ilex opaca). Adapted to a wide range of soil and climate. In many places will grow into specimen trees 25 ft. or more in height, but often kept sheared in the garden to small specimens. White flowers in early Spring, the female plants producing red berries which hang on throughout the Winter. (See illustration.) 2-3 ft. \$3.50, 3-4 ft. \$4.50, 4-5 ft. \$6.00; large specimens as follows: 8-9 ft. \$22.50, 9-10 ft. \$27.50, 10-11 ft. \$35.00.

Chinese (Ilex cornuta). Masses of large red berries which appear on younger plants than the American. Not entirely hardy in the colder, higher altitudes of Virginia, but ideal in the eastern half and all points farther South. 18-24 in. \$3.75, 2-3 ft. \$5.00.

Oriental (Ilex crenata). Differs from the Chinese by having small, thick, dark green foliage, red berries. 18-24 in. \$3.75, 2-3 ft. \$5.00.

Yaupon (Ilex vomitoria). Somewhat resembles the Oriental but a faster grower. During the severe Winters it does not retain its foliage as well as the Oriental. Red berries. 3-4 ft. \$4.50, 4-5 ft. \$6.00.



Oregon Hollygrape

HOLLYGRAPE (Mahonia). A group of Broad-leaved Evergreens resembling Hollies, but belonging to a distinct class. Dwarf growers which can be put to many uses. Especially attractive because of their berries which hang on until well into Winter.

Leather-leaf (Mahonia bealei). Large, leathery, bluish foliage, silvery underneath. Small yellow flowers in Winter; followed by large, blue berries, regardless of zero temperature. An odd, as well as useful Broad-leaved Evergreen. 18-24 in. \$2.75.

Oregon (Mahonia aquifolium). 4 to 5 ft. Holly-like leaves, turning to a glossy bronze color during the Winter. Yellow flowers in the Summer followed with blue berries, which hang on well into the Winter. (See illustration.) 18-24 in. \$2.50, 2-3 ft. \$3.50, 4-5 ft. specimens, \$7.50.

HYPERICUM moserianum. 24 in. Generally classed as a Broad-leaved Evergreen, but is somewhat perennial-like in habit, freezing back to the ground where the Winter is severe, reappearing early in the Spring, offering yellow blossoms throughout the Summer. A wonderful little plant for the rock garden. 3 yr. clumps, \$1.00 each; 5 yr. clumps, \$1.75 each.

LIGUSTRUM amurense. A fast growing, inexpensive, Broad-leaved Evergreen which is easily sheared and can be kept at almost any desired size and shape. 2-3 ft. \$1.75, 3-4 ft. \$2.50.

Lucidum. Not entirely hardy in the western part of Virginia. Medium to dwarf grower. Large, dark, green, glossy foliage which varies little in Winter and Summer. White flowers followed by blue berries, which hang on until Spring. 18-24 in. \$2.50, 2-3 ft. \$3.00, 3-4 ft. \$4.50.

LONICERA pileata. A prostrate Lonicera resembling Cotoneaster microphylla; useful in low foundation plantings, at entrances and in evergreen borders. 18-24 in. \$2.75.

MAGNOLIA glauca. Medium size; light green foliage, silvery underneath. White, Tulip-like flowers; foliage is lost during severe Winters. 2-3 ft. \$2.50, 3-4 ft. \$3.25.

Grandiflora. One of the best known and most popular Southern Evergreen trees. Can be satisfactorily grown in most parts of Virginia but not hardy much farther north. In the eastern part of the state and farther south the tree grows to be quite large. Large, Tulip-like, very fragrant, pure white flowers, followed by pods of bright red berries. (See illustration.) 2-3 ft. \$3.00, 3-4 ft. \$4.50, 4-5 ft. \$6.00, 5-6 ft. \$8.00.

NANDINA domestica. 3 to 4 ft. Used throughout Virginia and near the coast farther north. Small, light green foliage in Summer, turning to beautiful Autumn red, continuing so throughout the Winter. White blossoms in Summer, large pods of bright red berries in Fall and Winter. One of the most useful and beautiful Broad-leaved plants. 12-15 in. \$1.75, 15-18 in. \$2.25, 18-24 in. \$3.00.

POMEGRANATE. Small, glossy green foliage resembling Holly. An evergreen farther South, but deciduous in Virginia. 2-3 ft. \$2.50, 3-4 ft. \$3.50.

PYRACANTHA (Firethorn) Lalandi. The most hardy Pyracantha. Upright grower, white flowers; large, orange-colored berries which are beautiful from Midsummer until late Winter. We recommend pruning back severely when transplanted. 18-24 in. \$2.75, 2-3 ft. \$3.50, 3-4 ft. \$4.50.

Rogersi. A compact, low growing type. White flowers in May, bright red berries in Fall and Winter. Prune when planting. 18-24 in. \$3.00, 2-3 ft. \$3.75.

Rhododendrons

The Rhododendrons would be worthy of a place in the garden even if they did not bloom, but few plants are more beautiful when blossoming, under favorable conditions in the garden. To avoid disappointment, we recommend using Rho-Za-Grow in planting Rhododendrons, also treating with Rho-Za-Grow once a year. For best results, plant in semi-shade.

CATAWBIENSE. Early bloomer, dwarf grower. Medium size, dark green leaves. Purplish red flowers in May. 18-24 in. \$2.50, 2-3 ft. \$3.50, 3-4 ft. \$5.00.

MAXIMUM. The tallest, strongest grower of the Rhododendrons. Large leaves, light pink flowers in June and July. Useful as a background in group plantings with the Catawbiense. 18-24 in. \$2.50, 2-3 ft. \$3.50, 3-4 ft. \$5.00.

HYBRIDS. May be had in various named varieties, but we offer only the **Pinks** and **Reds** in the 18-24 in. at \$5.00, 2-3 ft. at \$8.00.

VIBURNUM

The Viburnum is one of our largest families of useful plant material, consisting of Trees, Shrubs and Broad-leaved Evergreens. We offer two of the most popular Broad-leaved Viburnums which are hardy in Virginia and farther south, are new, rare, and beautiful. A few such plants add much to the attractiveness and interest of your garden.

Burkwoodi. Recently introduced from England. Waxy, bluish white, fragrant flowers in early Spring, in round, dome-shaped clusters; red berries. Plants grow 4 to 5 ft. in height and 6 ft. in diameter; very fragrant. 15-18 in. \$3.00, 18-24 in. \$4.50.

Rhytidophyllum (Leather-leaf Viburnum). One of the most hardy and valuable of the Broad-leaved Evergreens. Beautiful, large, thick, leather-like, dark green leaves. White flowers in early Summer, followed by red berries. Can be grown in both full sunlight and partial shade. One of the new plants having great possibilities. 18-24 in. \$2.75, 2-3 ft. \$3.50, 3-4 ft. \$5.00.



American Holly



Magnolia Grandiflora

SHADE TREES

A good shade tree not only furnishes shade, but often affords bloom, fruit, Autumn coloring, and serves as a screen or background for other plantings. The following selection of varieties has been made up with those qualities in mind. We, however, are listing separately under "Flowering Trees" a group of trees planted especially for ornamental effect. Both groups are planted for shade.

ASH, AMERICAN WHITE (*Fraxinus americana*). Good growers, spreading and giving excellent shade, yet not so dense as to destroy the grass beneath the branches. Suitable for streets and campuses, as well as on lawns where space permits. 8-10 ft. \$2.75 each, \$30.00 per dozen; 10-12 ft. \$3.50 each, \$37.50 per dozen; 2½-3 in. caliper, \$7.50 each.

BEECH, AMERICAN (*Fagus americana*). This famous tree is denied more extensive use because of its being difficult to transplant. So we offer only balled and burlapped specimens. 3-4 in. caliper, \$30.00 each; 4-5 in. caliper, \$45.00 each.

BIRCH (BETULA), Cut-leaved Weeping (*Betula alba pendula laciniata*). A slender tree with white bark, gracefully weeping branches; fern-like, cut leaves—all of which combine to make it one of the most beautiful trees. It may be used as a specimen or in groups with other varieties. (See illustration.) 6-8 ft. \$3.50 each; 8-10 ft. \$4.50 each; 10-12 ft. \$6.00 each.

European White (*Betula alba*). White bark, larger leaves and stiffer branches than the weeping type, but a good shade tree, as well as effective in group plantings. 6-8 ft. \$2.75 each; 8-10 ft. \$3.50 each; 10-12 ft. \$4.50 each.



Cut-leaf Weeping Birch

CATALPA bungei (Umbrella Catalpa). Small, umbrella-like tree, suitable for small grounds. Seldom grows higher than 10 to 12 ft., with an umbrella-like spread equaling the height. 5-6 ft. \$3.00 each, \$33.00 per dozen.

Speciosa (Western Catalpa). Fast growing, open top tree, suitable where quick effect is desired. 6-8 ft. \$2.00 each; 8-10 ft. \$2.75 each.

ELMS (*Ulmus*). The Elm comprises one of the best known and most practical groups of shade trees, being adapted to almost all kinds of soil and climate. Easily transplanted and reasonably fast growers.

American (*Ulmus americana*). This famous American shade tree is at its best when planted in the parks and broad streets of the New England states, where specimens are found more than 100 years old. Yet it succeeds equally as well throughout the South. 8-10 ft. \$2.75 each, \$30.00 per dozen; 10-12 ft. \$3.75 each, \$40.00 per dozen; 2½-3 in. caliper \$8.00 each; 3-4 in. caliper, \$15.00 each.

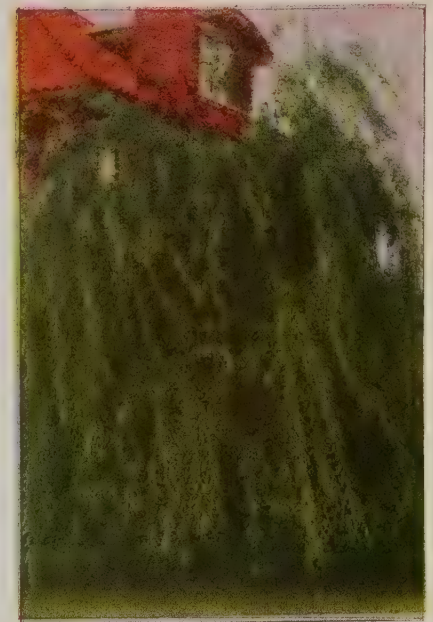
Moline (*Ulmus Moline*). A fast growing, erect type of the American Elm. Used in spaces too small to permit the use of the more spreading types. 5-6 ft. \$2.00 each; 6-8 ft. \$3.00 each; 3-4 in. caliper, \$15.00 each.



Pin Oak

Chinese Elm

Chinese Elm (*Ulmus pumila*). A comparatively new type of Elm in this country. However, it has been used for ornamental purposes for hundreds of years in China, having been imported from Siberia. It resembles the American Elm, but is more compact, has finer branches, less spread, and does not grow to be as large a tree. Suitable for streets, on home grounds, and other places where a fast growing, medium size tree is desired. Sends its roots deep into the soil, interfering very little with the grass. One of the fastest growers of all shade trees; also one of the first to come out in leaf in the Spring and the last to lose its foliage in the Fall. 4-5 ft. \$1.20 each, \$12.00 per dozen; 5-6 ft. \$1.60 each, \$16.00 per dozen; 6-8 ft. \$2.25 each, \$22.50 per dozen; 8-10 ft. \$2.75 each, \$27.50 per dozen; 10-12 ft. \$3.75 each, \$40.00 per dozen, 2-2½ in. caliper, \$5.00 each, \$52.50 per dozen; 2½-3 in. caliper, \$8.00 each.



Weeping Willow

Please send me your 1942-43 Catalogue of bargain price fruit, nuts, etc., trees. I bought off you about four years ago and I like the way you packed and shipped the stock. I did not lose a tree. Thanks.

(Signed) W. J. W. WALCOTT,
14 Amsterdam Ave., New York City.

GINKGO biloba (Maidenhair Tree). An old variety which is still in demand 5-6 ft. \$3.00 each.

GUMS, Sour (*Nyssa sylvatica*). Medium to small grower. Noted for its scarlet foliage in Autumn. Being difficult to transplant, we offer same balled and burlapped—6-8 ft. at \$6.00, 8-10 ft. at \$10.00.

Sweet (*Liquidambar styraciflua*). Medium size, reasonably fast growing shade tree with odd, cork-like bark. Large green leaves during the Summer, turning to beautiful golden and scarlet in the Fall, making it a very satisfactory shade tree, but like the Sour Gum, is difficult to transplant. 4-6 ft. \$2.25 each; 6-8 ft. \$3.25 each; 8-10 ft. B&B, \$10.00 each; 2-2½ in. caliper B&B, \$20.00 each.

HACKBERRY (*Celtis occidentalis*). A small, slow growing tree with spreading branches. 4-6 ft. \$1.75 each.

HONEY LOCUST (*Gleditsia triacanthos*). An odd-shaped, straggly growing tree. Flat top, somewhat weeping branches, smooth bark, finely cut dark green foliage. 4-6 ft. \$1.75 each; 6-8 ft. \$2.50 each; 8-10 ft. \$3.50 each.

KENTUCKY COFFEE TREE (*Gymnocladus dioica*). An irregular shaped tree with blue-green foliage; somewhat resembles the Walnut. 5-6 ft. \$2.50 each; 6-8 ft. \$3.00 each.

MAPLE (*Acer*). This group of shade trees is well known and extensively planted, since the Maples can be satisfactorily grown in a large part of this country. There are numerous varieties; we offer only the most popular ones as follows:

Scarlet (*Acer rubrum*). A medium grower. Light green foliage, turning to scarlet in the Fall. Not quite as dense as the Norway. 8-10 ft. \$4.00 each; 10-12 ft. \$5.50 each.

MAPLE (ACER)—Continued

Norway (Acer platanoides). Especially suited for street planting and on the grounds of small homes. As it makes only a medium size tree, can be used where space does not permit the use of the larger trees like the Sugar Maple and American Elm. Large, dark green foliage; dense, spreading. A medium grower. (See illustration.) 6-8 ft. \$2.75 each, \$30.00 per dozen; 8-10 ft. \$3.75 each, \$40.00 per dozen; 2-3 in. caliper, \$7.50 each, \$77.50 per dozen; 3-3½ in. caliper, \$10.00 each, \$110.00 per dozen, \$850.00 per 100; 3½-4 in. caliper, \$15.00 each, \$165.00 per dozen; 4-5 in. caliper, \$22.50 each, \$225.00 per dozen.

Schwedler's (Acer schwedleri). Resembles the Norway. The foliage is blood-red in the Spring, gradually turning to a dark green during the Summer. 10-12 ft. \$5.00 each; 2-2½ in. caliper, \$7.50 each; 2½-3 in. caliper, \$10.00 each.

Silver (Acer dasycarpum). Especially popular because of being a fast grower. Light green foliage, slightly silvery underneath. Trees grow to be larger and more spreading than the Norway and should be given more space. An excellent tree for broad streets and large home grounds, as well as useful for public parks. 8-10 ft. \$3.00 each, \$32.50 per dozen; 10-12 ft. \$3.75 each, \$40.00 per dozen; 2½-3 in. caliper, \$6.50 each; 3-4 in. caliper, \$9.00 each; 4-5 in. caliper, \$17.50 each.

Sugar (Acer saccharum). A native of the East, found growing in forests. In some localities the trees are tapped for the sugar water, which is boiled into syrup and maple sugar. Tall, pyramidal shape, requiring more space than its cousin, the Norway. 6-8 ft. \$3.00 each; 8-10 ft. \$4.00 each.

OAK (QUERCUS). For permanent shade, few varieties excel the Oaks, which are long-lived, sturdy and stately. There are many varieties of Oaks; we attempt to offer only the most useful shade and ornamental varieties. The Oaks are more difficult to transplant than some other varieties of shade trees and are slower in becoming established after being transplanted, but after once established are reasonably fast growers and become more valuable with age.

Laurel (Quercus laurifolia). Grows naturally from Virginia to Florida. Shining, dark green leaves semi-evergreen. 5-6 ft. \$3.00 each.

Chestnut (Quercus montana). Tall, rather slender grower with foliage less dense than the Pin Oak. Most useful when planted in groups with other varieties. 8-10 ft. \$4.00 each, \$42.50 per dozen; 10-12 ft. \$5.00 each; 2½-3 in. caliper, \$10.00 each.

English White (Quercus Robur). An odd, slow grower with small, curly, serrated leaves. May be used as specimens or on the outside of group plantings. 6-8 ft. \$3.50 each; 8-10 ft. \$4.50 each; 10-12 ft. \$6.00 each.

Pin (Quercus palustris). The most extensively planted of all Oaks, because it lends itself better as a shade tree for narrow streets and small home grounds. It is also useful in parks, bordering driveways, and almost anywhere a medium size shade tree is required. A very uniform, pyramidal grower; large, glossy green foliage, turning to red in Fall—making the tree ornamental as well as affording desirable shade. (See illustration.) 6-8 ft. \$3.50 each, \$37.50 per dozen; 8-10 ft. \$4.50 each, \$47.50 per dozen; 10-12 ft. \$6.00 each; 2-2½ in. caliper, \$8.00 each.

Red (Acer rubra). Another good Oak which makes a beautiful shade tree from the time it is established on lawn or street. Grows to be very old and a giant in the forest. When planting a tree as a lasting memorial we recommend Red Oak as being one of the best. Has large, glossy green foliage which turns scarlet in Fall. 6-8 ft. \$3.50 each; 8-10 ft. \$4.50 each; 10-12 ft. \$6.00 each; 2-2½ in. caliper, \$8.00 each.

Scarlet (Acer coccinea). Very similar to the Red Oak in general appearance and habit of growth; foliage somewhat more serrated and turns to a more uniform red in Autumn; a beautiful, satisfactory tree. Sizes and prices same as Red Oak.

White (Quercus alba). The well known, native American White Oak. Rather difficult to transplant but makes a beautiful tree especially when planted in groups in parks or on large estates. Same sizes and prices as Red Oak.

PLANE, Oriental (Platanus orientalis). The Plane is a good grower and especially useful in cities where some varieties do not succeed because of smoke. Useful as a street tree, as well as on the lawn. 6-8 ft. \$2.75 each; 8-10 ft. \$3.50 each; 10-12 ft. \$4.50 each; 2½-3 in. caliper, \$9.00 each; 3-4 in. caliper, \$12.00 each.



Norway Maple

POPLAR (POPULUS), Carolina (Populus canadensis). A rapid growing, softwood tree. Planted largely because it affords quick shade. Broad, light green foliage. Easily transplanted. 10-12 ft. \$3.00 each; 2-2½ in. caliper, \$4.00 each.

Lombardy (Populus nigra italica). Tall, slender, rapid grower. Suitable as a background, planting along driveways, screening off outbuildings and other unsightly objects. 5-6 ft. 85c. each, \$8.50 per dozen, \$60.00 per 100; 6-8 ft. \$1.25 each, \$12.50 per dozen, \$75.00 per 100; 8-10 ft. \$1.75 each, \$17.50 per dozen, \$100.00 per 100; 10-12 ft. \$2.25 each, \$22.50 per dozen.

Simoni (Populus simoni). Another fast, slender grower, somewhat resembling the Lombardy, but having more spread and being a longer lived tree. 5-6 ft. \$1.20 each, \$12.00 per dozen; 6-8 ft. \$1.50 each, \$15.00 per dozen; 8-10 ft. \$2.00 each, \$20.00 per dozen.

WALNUT, American Black (Juglans nigra). Fast growing, spreading shade tree. Profitable for both timber and nuts. Especially useful for planting in pasture fields as the grass thrives underneath. Makes good shade for the stock and at the same time is growing into valuable timber. 6-8 ft. \$2.00 each, \$20.00 per dozen; 8-10 ft. \$3.00 each, \$30.00 per dozen.

WILLOW, WEEPING (Salix babylonica). One of the most beautiful of the weeping trees. Especially suitable for planting along streams, but can be grown in well drained soil. (See illustration.) 5-6 ft. \$1.50 each, \$15.00 per dozen; 6-8 ft. \$2.00 each, \$20.00 per dozen; 8-10 ft. \$3.00 each.

Flowering Trees for Shade and Beauty



Cornus, Pink Dogwood

Flowering Trees can often be used to serve both for shade and as an ornamental, and should be used wherever possible. Flowering Trees may be planted either in groups or as specimens, on both the large estate and small home grounds.

APPLE TREES.

While the Apple is generally planted for its fruit, it is one of our most beautiful



Mountain Ash

ornamental trees. It is difficult to imagine a scene more beautiful than Apple Trees in full blossom. The Apple also makes a satisfactory shade tree and at the same time serves for growing fruit, which—when ripe—adds to the interest. Specimen Apple Trees, in choice varieties, selected for ornamental purposes, are twice transplanted and pruned so as to make them suitable for this purpose. 5 yr., 7-8 ft. \$3.00 each, 6 yr. 1½-2 in. caliper, 8-9 ft. \$4.50 each; 7 yr., 2-2½ in. caliper, 8-10 ft. \$6.00 each.



Eley's Flowering Crab

ASH, European Mountain (*Sorbus aucuparia*). A small tree which is especially noted for its orange-red berries in the Fall. However, its masses of white bloom in Spring are not to be overlooked. (See illustration.) 5-6 ft. \$2.00 each, \$20.00 per dozen; 6-8 ft. \$2.75 each, \$27.50 per dozen; 8-10 ft. \$3.50 each, \$37.50 per dozen.

CUCUMBER TREE (*Magnolia acuminata*). Somewhat resembles the Tulip Tree. Large, light green foliage; cream-colored, fragrant, Tulip-like flowers in the Spring, followed by red seed pods. 6-8 ft. \$3.00 each; 8-10 ft. \$4.00 each.

DOGWOOD (CORNUS), Pinkflowering (*Cornus florida rubra*). Possibly no small flowering tree is better known and in greater demand than the Pinkflowering Dogwood, which makes an ideal specimen on the lawn and is equally as useful for planting in groups with Whiteflowering Dogwood and other flowering trees. (See illustration.) 2-3 ft. \$2.25 each, \$22.50 per dozen; 3-4 ft. \$3.00 each, \$33.00 per dozen; 3-4 ft., B&B, specimens, \$4.00 each; 4-5 ft., B&B, specimens, \$6.00 each; 5-6 ft., B&B, specimens, \$7.50 each; 6-7 ft., B&B, specimens, \$9.00 each.

Whiteflowering (*Cornus florida*). As everyone knows this beautiful little tree, it requires no further description. 2-3 ft. \$1.50 each, \$15.00 per dozen, \$85.00 per 100; 3-4 ft. \$1.75 each, \$17.50 per dozen, \$125.00 per 100; 4-6 ft., B&B, specimens, \$4.50 each; 6-7 ft., B&B, specimens, \$6.00 each.

DOUBLE FLOWERING PEACH (*Prunus persica*). The trees in appearance resemble the commercial varieties of Peach, but are profuse bloomers of double blossoms of **Pink, Red and White**—making them desirable for ornamental purposes. 3-4 ft. \$1.25 each; 4-6 ft. \$1.75 each.

FLOWERING CHERRY (*Prunus Kanzan*). Flowering Cherries are now so well established and in such popular demand that you need not be told of their value for ornamental purposes. We offer the **Kanzan**, the most popular double pink variety and the most extensively planted of all Flowering Cherries. 3-4 ft. \$2.75 each, \$30.00 per dozen; 4-5 ft. \$3.50 each, \$37.50 per dozen.

FLOWERING CRAB (*Malus*). This class of small flowering trees had not been given proper recognition until recent years when they began coming into their own. Flowering Crabs are now available in a large assortment of varieties. We offer a carefully selected list of the better varieties as follows:

Carmine (*Malus atrosanguinea*). Single, red flowers. Free bloomer.

Eley's (*Malus eleyi*). Masses of red flowers in the early Spring, followed by blood-red fruits. Strong, vigorous grower. (See illustration.)

Hopa (*Malus hoppi*). Bright rose-red, double flowers in profusion. Red fruits. Another good grower; excellent as a specimen.

Oriental (*Malus floribunda*). Pink buds, white flowers, followed by yellow fruits. One of the best of this type.

Prices on above Flowering Crabs: 3-4 ft. \$1.25 each, \$12.50 per dozen; 4-6 ft. \$2.00 each, \$20.00 per dozen; 6-7 ft. \$3.00 each, \$30.00 per dozen.

GOLDEN CHAIN, Improved (*Laburnum vossii*). A new, improved Golden Chain. Golden yellow clusters of flowers as much as 18 in. in length. 3-4 ft. \$3.00 each; 4-5 ft. \$4.50 each.

GOLDENRAIN TREE (*Koelreuteria paniculata*). Clusters of lemon-yellow flowers in Midsummer. Grows 20 to 30 ft.; globular shaped when mature, a rather straggly grower when young. 5-6 ft. \$2.00 each; 6-8 ft. \$2.50 each; 8-10 ft. \$3.50 each.

GREAT SILVER BELL (*Halesia tetraptera*). A small tree, 20 to 25 ft., noted for its masses of small white, bell-shaped flowers, silvery foliage and scaly bark—offering a striking contrast when planted in the garden among other trees. 6-8 ft. \$2.75 each.

LINDEN (TILIA), American (*Tilia americana*). Large green leaves; fragrant, creamy white flowers. Good grower, uniform, shapely tree. Useful for both specimens and street planting. 6-8 ft. \$2.75 each; 8-10 ft. \$3.75 each; 2-3 in. caliper \$7.50 each.

European Little-leaf (*Tilia cordata*). Smaller leaves than the American, more dwarf, compact grower. Excellent shade tree for the small home grounds or planting on narrow streets. 5-6 ft. \$2.50 each; 6-8 ft. \$3.50 each; 8-10 ft. \$4.50 each.

LOCUST, BLACK (*Robinia pseudoacacia*). A native American tree which builds up soil rather than depletes it, as is the case with some varieties of shade trees. Valuable for its posts. Fragrant, creamy white flowers. 8-10 ft. \$3.00 each, 10-12 ft. \$4.00 each.

MAGNOLIA, NEW PURPLISH RED (*Magnolia soulangeana nigra*). The most showy and satisfactory of the rare Oriental types. Large, tulip-like, purplish red flowers. The best bloomer. At its best in the early Spring, some flowers appearing during the Fall. Grows only 12 to 15 ft. branched from the ground. (See illustration.) 2-3 ft. \$4.50 each, 3-4 ft. \$6.00 each, 4-5 ft. \$9.00 each.

MIMOSA (*Albizia julibrissin*). Well known popular Southern tree. Long branches, wide spreading top. Pink flowers dark green fernlike foliage. Not often planted north of Virginia. 6-8 ft. \$2.75 each, 8-10 ft. \$3.50 each, 2½-3 in. caliper, \$8.00 each.

PURPLE-LEAVED PLUM (*Prunus pissardi*). A larger, more vigorous grower than the Blood-leaved Maple, the foliage is equally as beautiful and the tree costs less. Purplish red foliage in the Spring, retaining its color well throughout Summer. Ornamental bright red fruits. 3-4 ft. \$1.25 each, 4-6 ft. \$2.00 each.

REDBUD (*Cercis canadensis*). Beautiful small tree which only recently has become recognized as one of our most valuable native flowering trees. Small pink flowers literally cover stems in early Spring before foliage appears; excellent for planting with Dogwoods, around edge of forests, bordering lawn, in group plantings and as specimens. (See illustration.) 3-4 ft. \$1.25 each, \$12.50 per doz.; 4-6 ft. \$2.00 each, \$20.00 per doz.; 6-7 ft. \$3.00 each.

SOURWOOD (*Oxydendrum arboreum*). A medium size tree with long, glossy green leaves which turn brilliant red in Autumn making it one of the most beautiful Autumn forest trees. Creamy white flowers which remain on several weeks in the Summer. Unfortunately, this valuable tree is rather difficult to transplant so we offer dug with and without ball. 5-6 ft. without ball, \$3.00 each, B&B, \$5.00 each; 6-7 ft. B&B, \$7.50 each.

TULIP TREE (*Liriodendron tulipifera*). Also known as Tulip Poplar. Large, stately pyramidal fast growing tree. Fragrant, creamy cup shaped, Tulip-like flowers blotched with orange. Prefers Spring planting. 5-6 ft. \$2.00 each; 6-8 ft. \$3.00 each; 8-10 ft. \$4.00 each; 10-12 ft. \$6.00 each. Larger B&B trees quoted on request.



Magnolia Souiangeana



Red Bud



Mrs. P. S. du Pont
Tapering, reddish gold buds and double, golden yellow flowers; spicy fragrance



Caledonia
Large, pure white. Long, strong stems; good foliage



Talisman
A rare combination of shadings of gold, apricot, yellow, and deep pink. Beautiful, long, pointed buds and good stems



Mrs. Charles Bell
Delicate shell-pink. The only Rose with this particular color

Imperial Dozen

There are numerous good Roses; in fact there are a thousand or more varieties each having some merit. It would not be practical for us to offer all the varieties and it would be a difficult task for a planter to make a selection from an extended list. So we have attempted to select and offer only the most practical and popular varieties planted in the area in which we operate. Our Imperial Dozen, illustrated on this page, is made up of various shades of the finest garden varieties we know, and is offered in 2 year, No. 1, Blooming Size Plants.

We offer the Imperial Dozen—1 each of the 12 varieties illustrated on this page—for \$9.75, or 80c. each, your choice of the varieties.

Gold Medal Hybrids

While most of the varieties of the following selection of Hybrids are not quite as new as the Imperial Dozen Collection, they are among the best in cultivation. They have been thoroughly tested and meet the requirements of beautiful, vigorous garden Roses.

2 Year, No. 1, Blooming Size Plants: \$8.50 per dozen—80c. each, your choice of varieties

(See Back Cover for Collection of Six)

Betty Uppichard. Color similar to the Edith Nellie Perkins. Very fragrant. Tall, branching plant.

Dame Edith Helen. Color similar to the Editor McFarland. Long stems, vigorous bloomer.

Etoile de Hollande. Color similar to the E. G. Hill. Considered the finest Red Rose in the world.

K. A. Viktoria. Creamy white buds, snow white flowers. One of the best Whites.

Lady Hillingdon. Color similar to the Mrs. P. S. Du Pont. Famous old garden variety.

Luxembourg. Color somewhat like the Edith Nellie Perkins. One of the best for the South.

Radiance Pink. Color similar to the Edith Nellie Perkins. Vigorous, healthy grower. One of the best Pinks.

Radiance, Red. Bright, even shade of pure red. Size, foliage, growth, and habits same as its parent, the Pink Radiance.

Sunburst. Color similar to the Mrs. P. S. Du Pont. An old garden variety which continues popular.

President Herbert Hoover. Blend of orange and pink, flamed and suffused with vivid rose pink.

Group of 12 Gold Medals, \$4.50



Editor McFarland
Clear, brilliant pink. Strong stems for cutting



Condesa de Sastago
Cup flowers of fiery copper inside and rich gold on the reverse



Golden Dawn
Large, double flowers of lemon-yellow; deliciously fragrant



Margaret McGredy
Double, cup-shaped flowers of orange-scarlet turning to a peculiar shade of carmine-rose



Ami Quinard
Strong grower; semi-double flowers of deep, velvety crimson.



Edith Nellie Perkins
Shapely, two-toned pink flowers produced in great abundance. Strong grower



E. G. Hill
Immense, dazzling red flowers. Vigorous, free flowering; one of the best



Joanna Hill
Pointed buds, deep creamy yellow flowers tinged with salmon and yellow; long, strong stems



Paul's Scarlet Climber

CLIMBING ROSES

AMERICAN BEAUTY

True American Beauty color.

DR. W. VAN FLEET

Delicate flesh pink on the outer surface, deepening to rose flesh in center. Strong grower, good foliage.

GARDENIA

Creamy yellow buds, delicate ivory-white blooms. Profuse bloomer.

PAUL'S SCARLET CLIMBER

Vivid scarlet, semi-double blooms. Profuse bloomer. (See illustration.)

SILVER MOON

Clear, silvery white with a mass of bright yellow stamens. Vigorous, dark green, glossy foliage.

Prices: 2 yr., No. 1, Blooming Size Plants: \$8.25 per dozen, 75c. each, your choice of varieties

AMERICAN PILLAR

Deep rose-pink with white center.



New Dawn

NEW EVERBLOOMING DR. VAN FLEET

A patented sport of the Dr. Van Fleet, possessing all the fine qualities of its parent and is a continuous bloomer.

(See illustration.)

\$1.75 Each

MISCELLANEOUS ROSES ~ POLYANTHUS

AMERICAN BEAUTY

A popular Hybrid Perpetual; American Beauty Red.

EVERGREEN GEM

Low growing trailing Rose used as a ground cover. Small double white flowers; foliage almost evergreen.

FRAU KARL DRUSCHKI

Snow white Hybrid Perpetual; sometimes called the White American Beauty.

HUGONIS

Early yellow flowers. Used chiefly as a shrub and for borders.

MAX GRAF

Handsome foliage and sprays of large, single pink flowers. Useful for covering exposed banks.

ROSA RUGOSA

Hardy, stout, bushy shrub. Single flowers in May and June. Red or White.

Prices: 2 yr. No. 1 Blooming Size Plants: \$8.25 per dozen—75c. each, your choice of varieties



Gloria Mundi

The Polyanthus Roses, also known as Baby Rambler or Cluster Roses, are dwarf, shrub like in form and bloom from May until frost.

CHATILLON

One of the best bright Pinks, with a touch of orange.

GLORIA MUNDI

Brilliant orange-scarlet flowers in huge clusters. (See illustration.)

KATHARINA ZEIMET

Pure white. Fragrant; profuse bloomer.

LAFAYETTE

Large, semi-double; cherry-crimson.

Price: 2 yr. No. 1, Blooming Size Plants: \$9.75 per dozen—90c. each—your choice of varieties



Clematis Jackmani

Hardy Vines and Ground Covers

FOR SHADE, DECORATION, SCREENS, AND COVERS

VINES

2- and 3-Year Sizes, 60c. each, \$6.00 per dozen, \$45.00 per 100, except as noted:

AKEBIA quinata. Dainty, beautiful vine. Purple flowers in May.

BALTIC IVY (Hedera helix baltica). A small leaved, extremely hardy English Ivy.

BITTERSWEET (Celastrus scandens). Popular for its orange-colored berries in

winter. (See illustration.)

BOSTON IVY (Ampelopsis veitchi). Most popular climber. Clings to walls. Often planted with English Ivy, which is evergreen, the Boston clinging to the wall and the English clinging to the Boston.

CLEMATIS, LARGE FLOWERING. No other climbing vine equals in attractiveness the beautiful, Large-flowering Clematis. Available in various colors, blooming profusely in May, followed with some blooms throughout the Summer. Excellent for porch and trellis planting.

Duchess of Edinburgh. Large, double white.

Jackmani. Most popular large purple. (See illustration.)

Mme. Andre. Large violet red.

Prices on Large-flowering Clematis: 2 yr. \$1.35 each, \$15.00 per dozen



Bittersweet

CLEMATIS paniculata. The finest of all Small Flowering Clematis. In Midsummer the entire vine is clothed in a mass of white bloom.

ENGLISH IVY (Hedera helix). Popular for covering low walls and as a ground cover in low, shady places. Evergreen. May be used for covering tall buildings when planted with Boston Ivy.

GOLD-FLAME HONEYSUCKLE (Lonicera heckrotti). Large, flame-coral, trumpet-shaped flowers lined with gold. May until frost. New and rare.

HAHN'S SELF-BRANCHING IVY (Small-leaved English Ivy). Particularly suited to indoor as well as outdoor culture. 3 yr. 75c. each, \$7.50 per dozen.

KUDZU VINE (Pueraria). Large, bean-shaped leaves. One of the fastest growers of all vines. Useful for covering steep banks, unsightly buildings or for making a quick screen or shade.

PITTSBURGH IVY. Self-branching. Resembles English; smaller leaf; more hardy.

SILVER LACE VINE (Polygonum auberti). Produces in Summer and Fall great foamy sprays of white flowers. Its foliage is very clean and is not bothered by insects. Excellent for trellises and porches.

TRUMPET VINE (Bignonia radicans). Large, orange-scarlet, trumpet-shaped flowers. Leaves are light green. Suitable for covering trunks of trees, old buildings, etc.

VIRGINIA CREEPER (Ampelopsis quinquefolia). This well known, native climber is one of the best and quickest growing varieties. Useful for covering trees, trellises and arbors. Its large, deep green foliage assumes brilliant shades of crimson and scarlet in Fall.

WISTERIA (Wisteria sinensis). A Chinese Vine which has been long used in this country. Requires considerable space and good support. Blooms in long, pendulous clusters of lavender-blue flowers in May.

GROUND COVERS

BITTERSWEET, EVERGREEN (Euonymus radicans). Bushy, evergreen ground cover. Succeeds in considerable shade. Used for covering banks, as a border, and covering low walls. 3 yr. 50c. each, \$5.00 per dozen; 4 yr. 75c. each, \$7.50 per dozen; 4 yr., B&B \$1.25 each.

HONEYSUCKLE, HALL'S (Lonicera japonica halliana). White and yellow fragrant flowers produced in abundance in early Spring and occasionally throughout the Summer. Used chiefly for holding steep banks, as a ground cover in shady locations, and may also be used as a climber. Bedding size, 25c. each, \$2.50 per dozen, \$15.00 per 100, \$85.00 per 1000; 3 yr. 50c. each, \$5.00 per dozen, \$35.00 per 100.

PACHYSANDRA terminalis (Spurge). One of the best ground covering plants, particularly valuable in shade, averaging 6 to 8 in. in height and branching freely into a dense mat. Its thick foliage is practically evergreen.

PURPLE WINTERCREEPER (Euonymus coloratus). Evergreen. Excellent ground cover for shady locations. The long, narrow leaves are rosy purple underneath and the veins pencilled in gray. 3 yr. 60c. each, \$6.00 per dozen; 4 yr. 85c. each, \$8.50 per dozen.

VINCA minor (Periwinkle). An old favorite trailing plant. Blue flowers, dark green leaves. Used as a ground cover under trees where grass fails. Bedding Size Plants, \$2.50 per dozen, \$15.00 per 100; Clumps, 35c. each, \$3.50 per dozen, \$25.00 per 100.

VINCA minor rosea (Periwinkle). New pink flowering variety. Clumps, 50c. each, \$5.00 per dozen.

Selected Hardy Perennials

PERENNIAL PRICES

30c. each, \$3.00 per dozen, \$20.00 per 100, except as noted

You may not have room for Shade Trees, Evergreens, Shrubs, or even Roses, and still have space for Perennials, which may be effectively arranged in spaces too limited for other types of Ornamentals.

Perennials also have an important place on the grounds of the average home, the large estate, roadside and park. They may be had in various heights from 1 inch to several feet, in numerous shades, from the first call of Spring until silenced by chill Winter winds. While they carry over from year to year, transplanting and renewing Perennial Beds from time to time is essential to best results. Furthermore, we like our gardens to be in style and must find space for the new, improved varieties—discarding the less desirable ones. Our list of Hardy Perennials is revised from year to year so that from the following collection you may choose varieties which will meet all requirements.

*Suitable for Rock Gardens

- ACHILLEA (Milfoil) millefolium kelwayi.** Magenta red. All Summer. Excellent cut flower. 18 in.
- AEGOPODIUM.** Silvery variegated foliage; white flowers. Grows in either sun or shade. Good border plant. 12 in.
- AGROSTEMMA (Rose Campion).** The Lily-like red blossoms make fine cut flowers, as well as garden subjects. June and July. 12 in.
- *AJUGA (Bugle).** Purplish-blue and pink. May and June. 6 in.
- *ALYSSUM saxatile compactum (Basket of Gold).** A compact, low growing Perennial. Bright yellow flowers in early Spring. Excellent rock garden plant. 6 in.
- ANTHEMIS kelwayi (Hardy Marguerite).** Yellow, Daisy-like flowers. July and August. 2 ft.
- ARTEMISIA, Silver King (Sagebrush.)** Planted chiefly because of its silvery foliage, affording a contrast in the Perennial Border. White flowers. 2 ft.
- *AUBRIETIA eyri (Purple Rock Cress).** Rosy lilac. Good grower. Especially useful as a rock garden plant. 6 in.
- BAPTISIA australis (False Indigo).** Dark blue, pea-shaped flowers in June. 2 ft.
- *CAMPANULA rotundifolia (Blue Bells of Scotland).** Clear blue flowers in Midsummer. Especially suited for rock gardens or steep slopes. 1 ft.



Chrysanthemum Autumn Lights



Aster, Beechwood Challenger

Hardy Asters

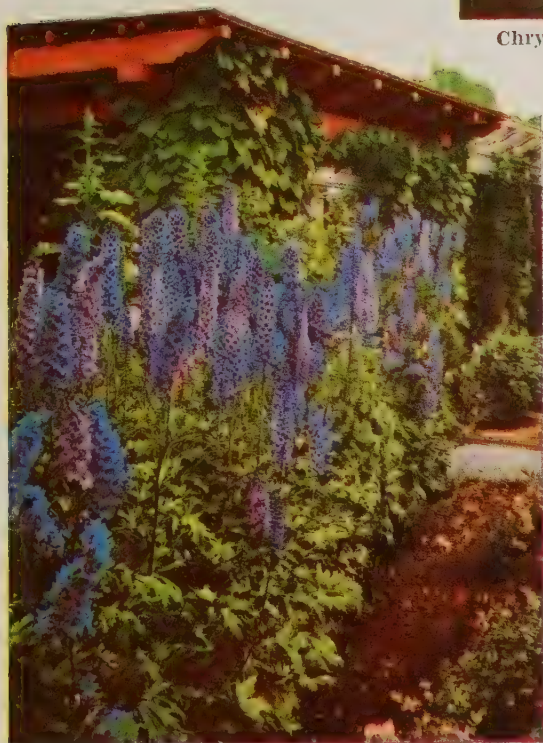
Improved varieties in this old garden plant have created much new interest. The Asters bloom in September and October, at a time the garden is most in need of color. We offer the following choice varieties:

- Amethyst.** A new outstanding purplish blue. Almost fully double. 3 ft.
- Barr's Pink.** A beautiful pink. Vigorous grower. 4 ft.
- Beechwood Challenger.** Very fine clear red. Strong grower. One of the best. 4 ft. (See illustration.)
- Blue Gem.** Large, double flowers of rich blue. 2½ ft.
- Harrington's Pink.** Deep rose-pink. One of the best new Asters. 4 ft.
- Royal Blue.** Rich deep blue. 3 ft.
- Tartaricus.** Large bluish violet. A tall growing variety, making an excellent background for other varieties. 6 ft.
- Violetta.** Pronounced by many as finest New Blue Aster known; sturdy grower; large flowers. 3 ft.

Price: 40c. each, \$4.00 per dozen

***CERASTIUM tomentosum (Snow-in-Summer).** A low growing plant having silvery-like foliage and an abundance of snow-white flowers in May. Excellent rock garden plant. 6 in.

COREOPSIS. Popular yellow flower which can be used for cutting from June until frost. 2 ft.



Delphiniums (See page 32)

Garden Chrysanthemums

Also known as Hardy Chrysanthemums. However, that does not mean that they are absolutely hardy everywhere under all conditions. Even here at Waynesboro we lose some of our Chrysanthemums during severe Winters. These garden varieties start blooming in August, continuing until freezing weather, supplying color when the garden most needs it. There are many varieties, but we attempt to list only the ones we consider most suitable for the communities we serve.

CUSHION MUMS

- Low growing, spreading type, especially suitable for rock gardens and low borders.
- ***Bronze Cushion.** Bronze flowers turning to a bronzy, coppery yellow.
- ***Pink Cushion.** Solid, compact grower. Covered with pink blossoms from August until frost.
- ***Red Cushion.** Similar habits to the popular Pink Cushion, but a dark red.
- ***White Cushion.** At opening shows a delicate pink, turning pure white as flowers develop.
- ***Yellow Cushion.** Bright glistening yellow.

Price: 35c. each, \$3.50 per dozen, \$25.00 per 100

MISCELLANEOUS STRAINS

- Autumn Lights.** Semi-double. Coppery bronze. Low growing. (See illustration.)
- Crimson Beauty.** Pompon. Bright crimson. Late.
- Indian.** Aster-flowering. Popular red. Early October.
- ***Innocence.** Single Korean. Dwarf, pure white. October.
- Jean Cumming.** Large-flowered. Purest white. Erect, medium height. September.
- Little Red Foot.** Button. Mahogany-red around a tight, dark center. October.
- Ohio Gold.** Decorative. Free blooming orange-yellow. September.
- Rose Charm.** Pompon. Bright rose-pink. October.
- Rose Royal.** Aster-flowering. Violet-blue. Late.
- Wannetka.** Decorative. Early, low growing white.
- White Doty.** Pompon. Large, pure white. Midseason.
- White Victory.** Large-flowering. Creamy white. Midseason.

Price: 35c. each, \$3.50 per dozen, \$25.00 per 100

MIXED GARDEN VARIETIES. \$3.00 per doz., \$20.00 per 100.



Primula Veris

***DICENTRA spectabilis (Bleedingheart)**. An old fashioned garden flower. Long racemes of heart-shaped pink flowers in May and June. 2 ft. 35c. each, \$3.75 per dozen.

ECHINACEA purpurea (Coneflower). Purple flowers with large, brown, cone-shaped centers. July to October. 3 ft.

ECHINOPS ritro (Globe Thistle). Metallic blue flowers, thistle-like foliage. July and August. 3 to 4 ft.

EUPATORIUM coelestinum (Hardy Ageratum). Light purple blue. August until frost. 12 to 15 in.

***EUPHORBIA myrsinites**. A prostrate plant with attractive blue-green foliage which survives throughout the Winter. Yellow flowers in early Spring. Especially desirable in rock gardens, because of its evergreen foliage and prostrate habit.

***EVENING PRIMROSE (Oenothera)**. Large yellow flowers June to August. 6 in.

CAILLARDIA grandiflora. One of the finest hardy garden plants. Used in borders, beds and for cut flowers. The bloom is most interesting, varying in numerous shades and blends of orange, red and yellow, seldom two plants producing identical blooms.

GYPSOPHILA paniculata (Babys-Breath). Minute, starry, white flowers borne in profusion on a massive spreading plant with small, thread-like stems. Useful for cut flowers, with coarser, larger blossoms. Blooms for a long period during the Summer. 3 ft.

HELIANTHUS, Harvest Moon (Perennial Sunflower). Rich yellow. Tall growing, good for backgrounds. September.

HELIOPSIS scabra excelsa (Orange Sunflower). Almost double, yellow flowers; July to October. 3 ft.

HIBISCUS (Mallow Marvels). Hollyhock-like, single flowers appearing in Midsummer. Mixed colors. 5 ft.

HOLLYHOCKS. An old garden favorite. Used as a background and planting along the garden fence. Numerous mixed colors. 5 to 6 ft.

LATHYRUS latifolius (Hardy Sweet Pea). Resembles the Annual Sweet Pea, but hardy. Mixed pink and white. Most often planted on trellis or fence. Used for indoor cut flowers.



Phlox Subulata

DELPHINIUM (Perennial Larkspur). Recognized as one of the most beautiful Perennials in the garden and one of the best cut flowers. We offer same in the two following types.

Chinensis. Low growing, garden type, in delicate shades of blue and pink. Lasts for a period of several months during the Summer and Fall.

English Hybrids, Wrexham Strain. Tall growing with spikes as much as 2 ft. Various shades of blue, blending into pastel shades of pink. At its best in early June. Some flowers throughout the Summer. (See illustration, page 31.)

DIANTHUS (Garden Pinks):

***Deltoides, Brilliant**. Low growing, compact, rock garden plant. Also used in borders and mass plantings. Rose flowers in May.

***Rose Cushion**. A dwarf, compact grower, forming an evergreen mat. Especially beautiful when covered by a blanket of pink flowers in early Spring; the foliage is beautiful throughout the year. Fine rock garden plant.



Phlox Divaricata

Phlox Divaricata Canadensis

A native species, worthy of extensive planting. Blooms early in April, continuing through May. Large, fragrant, lavender flowers. (See illustration.) 12 in. 35c. each, \$3.50 per dozen

Phlox Subulata

(CREEPING PHLOX)

An early Spring-flowering type with pretty, moss-like, evergreen foliage which during the flowering season in April and May is hidden under the masses of bloom. An excellent plant for the rockery, the border, and invaluable for carpeting the ground or covering graves.

***Alba**. Pure white. Neat, compact plant.

***Atrolilacina**. A star-like, bright light blue with small, deep red center.

***Atropurpurea**. The nearest to a red. Quite showy. Most promising new variety.

***Emerald Cushion**. Large, new pink. Beautiful foliage.

***C. F. Wilson**. Star-shaped, lavender flowers. Free bloomer.

***Maculata alpha**. Beautiful purplish rose with yellow eye. One of the best.

***Rosea**. Rose-pink. At its best on a dry, sunny bank (See illustration.)

Price on above named varieties Phlox subulata: 35c. each, \$3.50 per dozen

PHLOX subulata, Mi-red Colors, our selection—\$3.00 per dozen.

Ornamental Grasses

Easily grown. Long, shiny leaves; numerous fluffy, silky plumes, which are beautiful in the garden throughout Fall and early Winter; may also be cut and used for indoor decoration. Should be more used as a background for the Perennial Border, as a screen for hiding unsightly objects, as well as having many other uses. 6 to 8 ft. Clumps, 35c. each, \$3.50 per dozen.

Tall Growing PHLOX

Generally conceded as one of the best Perennials. May be had in a large assortment of varieties and in various colors, blooming over an extended period through the Midsummer. It is not possible to offer all the good varieties, but the selection we offer is made up of the best.

New Patented Varieties

ATLANTA (U. S. Patent No. 329). Unusually large flower heads made up of odd color. White, individual flowers shaded pale blue deep blue eye. Stems 2½ to 3 ft.

AUGUSTA (U. S. Plant Patent No. 252). Strong growing plant of medium height. Rich, bronzy green foliage. Large, cherry-red flower heads. Does not discolor or bleach in the sun like some Phlox.

COLUMBIA (U. S. Plant Patent No. 118). Considered by many as the best Phlox known and is generally considered the best of all the Pinks. Delicate cameo-pink, retaining its freshness and color for a longer period than other Phlox. Beautiful, healthy foliage, less subject to Phlox enemies than ordinary Phlox. Out of each joint grows a lateral or secondary flower spike, continuing the display of bloom long after the main flower head has disappeared. The Columbia is therefore well called the Perpetual Flowering Phlox. (See illustration.)

Prices, above patented Phlox: 50c. each, \$5.00 per dozen

Selected Standard Varieties

Border Queen. Very large heads of brilliant watermelon-pink blossoms. Flowers freely over a long period.

Chieftain. Deep crimson, which does not fade or discolor in sun.

Count Zeppelin. Pure white flowers with vermilion-red eye. Very free flowering.

Daily Sketch. Large trusses and individual florets. Light salmon-pink with crimson eye. One of the best.

Europa. White with red eye. Similar to the Count Zeppelin.

Mrs. Lingard. Most hardy and easily grown of all White Phlox. Flowers from June until October. Large heads of white flowers with pink shading in center.

Mrs. Milly Van Hoboken. Bright pink with a delicate mauve suffusion. Strong grower.

Rheinlander. A splendid old variety of good growing quality and excellent habit. Flower heads large; good strong stems; color beautiful salmon-pink.

R. P. Struthers. A popular old variety. Bright rosy red, crimson eye.

Wm. Kesselring. Plum-purple, shaded violet. Rather dwarf. Price on above standard varieties: 35c. each, \$3.50 per dozen

***LILY-OF-THE-VALLEY (Convallaria majalis)**. An old favorite garden plant. Also popular with florists. Dainty, white, bell-shaped flowers appearing in May are beautiful in the garden as well as desirable for cut flowers. Very fragrant. Can be grown in considerable shade. 6 to 10 in.

***LINUM perenne (Flax)**. Soft, feathery foliage. Clear blue flowers in early Spring. One of our most useful garden plants. Can be used in Perennial Borders, rockeries. 2 ft.

***LYCHNIS viscaria splendens**. A fine old-fashioned plant which has been improved. This is a dwarf type. Pink flowers in May and June; suitable for cut flowers, borders and rock gardens.

***MERTENSIA virginica (Virginia Blue Bells)**. One of the loveliest Spring blooming plants; usually found near streams and shady locations, but may be grown in full sun. 12 to 15 in.



New Columbia Phlox



Sedum Spectabile

- PHYSOSTEGIA virginica.** Handsome plants for sunny borders or wild gardens. Long spikes of delicate pink flowers in July and August. 3 to 4 ft.
- PLATYCODON (Balloonflower).** Broad blue and white bell shaped flowers all Summer. 2 ft.
- *PLUMBAGO larpentae.** Lovely, low growing plants with small, heart-shaped leaves of bronzy green; flowers deep peacock blue in small clusters. 6 in.
- POPPY, Oriental (Papaver orientalis).** Large, cup-shaped orange scarlet flowers in May and June, 2 to 3 ft.
- *PRIMULA veris (Hardy Primrose).** One of the most beautiful early Spring-flowering perennials. Various shades of yellow, orange and red. Prefers a shady location. 6 in.
- SALVIA azurea (Meadow Sage).** Grows 3 to 4 ft., producing during August and September pretty sky-blue flowers in great profusion.
- SEDUM (Stonecrop).** A hardy, easily grown ground cover plant. Thrives in both shade and full sunlight. Used for covering shady spots where grass will not succeed, also in rock gardens and as a border plant.

- *SEDUM kamtschaticum.** Orange yellow flowers, green foliage changing to golden in the Fall.
- *Middendorffianum.** Creeping growth. Yellow flowers in July.
- *Sarmentosum.** The best for filling seams between rocks. Planted in walls and rock gardens. Yellow flowers in June.
- Spectabile.** A tall grower, attaining a height of 18 in. Light green foliage, large, rose-colored flowers. Late bloomer. (See illustration.)
- *Spurium coccineum.** Prostrate grower. Rosy crimson flowers in July and August.
- *Stoloniferum.** Evergreen, low growing. Pink flowers in July and August.
- *STACHYS lanata.** Light purple flowers; silvery, woolly foliage. 18 in.
- STOKESIA, Blue Moon (Cornflower Aster).** Immense light blue flowers. Vigorous grower; free bloomer. September, 12 to 18 in.
- SWEET WILLIAM (Dianthus barbatus).** An old garden favorite which still has a place in modern gardens. Mixed colors.
- *THYMUS serpyllum (Thyme).** Creeping ground cover plant. Thrives in either sun or shade. Purplish pink flowers in Fall.
- TRITOMA (Red Hot Poker).** Rich orange scarlet flower heads on 3 to 4 ft. spikes. August to October. (See illustration.)
- *TUNICA saxifraga.** A pretty tufted rockery or border plant. Light pink flowers all Summer. 6 in.
- *VERONICA (Speedwell) longifolia.** Handsome blue flowers. July to September. 2 ft.
- *Rupestris.** A prostrate, ground cover type. Excellent for covering barren spots under trees, shrubs and on steep banks. Dark blue flowers in May and June.
- *VIOLA cornuta (Tufted Pansy).** Resembles the Pansy but a Perennial carrying over from year to year. Mixed colors, varying shades of purple, blue, and yellow.



Tritoma

PEONIES

Imperial Dozen—High Scoring Varieties

\$1.35 each, \$13.50 per dozen

The varieties of Peonies run into possibly a thousand or more. We attempt to list 25 or more of the better, most practical varieties, including the Imperial Dozen, made up of 12 of the highest scoring varieties known. This group is still

considered new, but each variety has been thoroughly tested and has been on the market long enough for the price to be reasonable and within the reach of anyone interested in good Peonies.

- Fuyajo.** One of the five highest rated and best Single Peonies. Dark rich mahogany-red.
- Jeannot.** One of the very finest. Large, globular, rose type flowers of delicate flesh-pink, softly tinted lavender. Late.
- Lady Alexandra Duff.** One of the very best Peonies, both for landscape and cut flowers. Delightfully fragrant, large, flat, semi-rose flowers. Soft pink and white. Midseason.
- Le Cygne.** The highest rated Peony and fully justifies its distinction. Very large, early, ivory-white without the slightest trace of any other color. Exquisitely fragrant.
- Martha Bulloch.** Tall, strong growth, producing immense blooms of soft rose-pink. Well formed and of good substance. Exquisite Rose fragrance. Late.
- Mme. Jules Dessert.** A delicate flesh-pink shading to creamy white with a golden glow at center; rates as one of highest. Midseason.

- Mons. Jules Elie.** Largest and most striking of Pink Peonies, being a gigantic flower of perfect crown type. Early flowering and has a pleasing fragrance; strong grower, free bloomer.
- Sarah Bernhardt.** A very large refined flower of semi-rose type. Apple blossom pink, silver tipped. A splendid Peony which has possibly won as many prizes as any one variety. Late.
- Solange.** A very large, full, compact flower of rose type. Has almost indescribable beauty. Outer petals are a very delicate lilac-white, deepening towards the center with a salmon shade. Strong grower. Late.
- Souv. de Louis Bigot.** One of the most distinct of all pink varieties. Very large, fragrant, rose type flowers with fringed petals of bright bengal-rose, slightly tinted with carmine at the base. Late midseason.

- Therese.** Enormous, compact, rose type developing later a high crown. Satiny pink with a glossy reflex; erect, strong grower. Midseason.
- Walter Faxon.** One of the finest of all Peonies. Soft coral pink shaded lighter at the ends of the petals and deeper rose-pink at the base. Delightfully fragrant. Midseason.

Gold Medal Peonies

Popular Garden Varieties

85c. each, \$8.50 per dozen

It is not possible to include in one dozen or even two dozen all the good varieties. So we have selected another group of a dozen—each for some special feature and merit. While these varieties do not rate as high as the Imperial Dozen, the selection is good and will afford you much joy and satisfaction.

- Albert Crousse.** Tall, late. Salmon-pink. Fragrant. Profuse bloomer.
- August Dessert.** Large, midseason. Intensely pink, silvery tipped.
- Baroness Schroeder.** White with creamy center. Tall, strong grower. Midseason.
- Carolina Mother.** An old garden favorite. Deep red suffused purple. Tall, vigorous grower, free bloomer. Midseason. (See illustration.)
- Duchess de Nemours.** Early. Cup-shaped. Sulphur-white.
- Eduis Superba.** Early. Tall. Fragrant. Dark pink. Good grower, free bloomer.
- Felix Crousse.** Large ball-shaped; one of best and most popular rich red cut flower varieties.
- Festiva Maxima.** Possibly the most extensively grown of all Peonies. Enormous, full double, pure white flowers flecked with carmine spots. Still considered by many as being the best White Peony. Early.
- Mme. Calot.** Light old rose-pink, creamy tint Very fragrant. Tall. Early, free bloomer.
- Nightingale.** Cherry-red; late; good grower.
- Rosa Corna Plena.** Favorite old garden variety. Beautiful rose pink. Midseason.
- Rubra Superba.** Carmine or crimson. Large compact flowers of rose type.



Carolina Mother Peony

PEONIES, Unnamed Varieties in Pink, Red and White. 65c. each, \$6.50 per dozen.
PEONIES, Dozen Mixed Choice Varieties. \$5.00.

Colorful IRIS

One of the oldest and most extensively used garden flowers, being cultivated in almost all countries of the world; in numerous soils and climates. Easily grown, requiring very little attention. One of the best border plants as well as having many other uses in both old and modern gardens, large and small. There are thousands of named varieties, but we attempt to offer only varieties found best suited for area we serve.

NOTE—Not fewer than 3 of a variety furnished at dozen rate, or 10 of a variety at 100 rate

IMPERIAL DOZEN Tall Bearded IRIS 50c. each, \$5.00 per dozen

We have carefully selected the following 12 as our Imperial Dozen. Each has been sufficiently tested to justify our recommending same, and has been on the market long enough for the price to be within the reach of everyone.

- Ambassadeur.** Standards, pearl-pink; Falls, deep maroon. One of the world's finest Irises.
- Coronation.** Fine large, rich deep golden yellow; one of best.
- Dolly Madison.** Early. Very large flowers; a most striking blend of soft, pastel colors with brilliant orange beard.
- Eleanor Roosevelt.** Rich, dark purple. One of the best of the Fall bloomers.
- Euphony.** Copper blend Standards; Falls, soft copper flushed with soft violet.
- Frieda Mohr.** Blended lilac-rose. Very fragrant. One of best.
- Gold Imperial.** Beautiful chrome yellow. Free bloomer. Excellent in mass plantings.
- Indian Chief.** Standards, deep pink; Falls, velvety crimson. One of the outstanding red-toned Iris. Large, perfect form. Free flowering.
- King Midas.** Golden buff suffused with garnet-brown and set off with deep orange beard. A beautiful Iris.
- Lent A. Williamson.** Large flowers, tall strong stems. Standards bright blue; Falls, rich, velvety purple. A good Iris.
- Midgard.** Enchanting blend of soft pink and yellow, flowers being of good size, nicely frilled. Fine form and substance.
- Pink Satin.** One of the world's finest pink-toned Irises, being one of largest, tallest, smoothest and most exquisite in color introduced to date; originally sold for \$40.00 per single plant.

GOLD MEDAL IRIS Tall Bearded 35c. each, \$3.50 per dozen, \$20.00 per 100

This group does not represent the newest varieties, but popular, thoroughly tested varieties of Bearded Iris worthy of a place in any garden.

- Afterglow.** Lavender-gray with a suffusion of gold at the center. Tall.
- Candelabre.** Light blue with white spot on the Falls.
- Crimson King.** A rich claret-purple.
- Dr. Bernice.** A coppery bronze, blending into a deep, velvety crimson.
- Florentina alba.** An early white.
- Georgia.** Rose, almost red.
- Her Majesty.** Standards, rose-pink; Falls, bright crimson.
- Lord of June.** Standards, bright blue; Falls, rich velvety purple. Tall.
- Loreley.** Standards, yellow; Falls, marine blue.
- Magnifica.** Violet and reddish violet.
- Marshmarigold.** Standards, golden yellow; Falls, purple-brown with yellow border.
- Mme. Chereau.** Cream-white, edged with light blue.
- Pallida Dalmatica.** Lavender. Large flowers. A popular old variety.
- Princess Beatrice.** Standards, fine lavender; Falls, deeper lavender.
- Quaker Lady.** An old favorite; lavender shading to deep blue.
- Queen of May.** The nearest to pink of the old varieties.
- Red Cloud.** Standards, rosy lavender-bronze; Falls, velvety crimson.



Miscellaneous IRIS

- Tall Bearded, Mixed.** \$2.50 per dozen.
- Oriental Iris, Mixed.** \$3.00 per dozen.
- Siberian.** Purple and white. \$2.50 per dozen.

- Susan Bliss.** Deep rose-pink with a light orange beard.
- Windham.** Soft lavender pink, the Falls being veined with a darker shade.



City of Portland Canna

Special Iris Border Offer

Consisting of 4 Dozen Good Varieties in a Special Border Mixture, suitable for bordering the driveway, walkway, or shrub groups.

All 48 Iris—a \$14.00 value—offered as a Special No. B-34 for only \$9.75

CANNAS

- | | | |
|--------------------------------|--------|---------|
| | Dozen | 100 |
| A good mixed assortment..... | \$1.25 | \$10.00 |
| Following named varieties..... | 1.75 | 12.00 |
- City of Portland.** Large flowers of glowing Watermelon-pink. 4 ft. (See illustration.)
- Eureka.** Most popular pure white. 3 to 4 ft.
- Hungarian.** Immense satiny rose-pink flowers. Blue-green foliage. 3½ ft.
- King Humbert.** Red. Bronze foliage. 5 ft.
- King Humbert.** Yellow. Green foliage. 5 ft.
- President.** The most popular red. Green foliage. 3½ ft.

GLADIOLUS

The garden should not only supply an effective, pleasing landscape, but a succession of suitable cut flowers for the home. It is difficult to imagine a more satisfactory cut flower than the Gladiolus, which may be had in various shades and may be planted over a period of three months—extending the blooming season from July to late Autumn.

- | | | |
|--------------------------------|-------|--------|
| | Dozen | 100 |
| Good Mixture..... | \$.75 | \$5.00 |
| Following Named Varieties..... | .85 | 6.50 |
- Crimson Glow.** Rich crimson. Fine, wide-open, perfectly formed flowers.
- Maid of Orleans.** Early, large, pure white with a touch of cream in throat. Very distinctive and fine.
- Minuet.** One of the finest lavenders.
- Picardy.** Salmon-pink. One of the finest Gladiolus ever produced.
- Red Phipps.** Soft, glowing red. Fine.
- Token.** Red with cream throat.
- W. H. Phipps.** Tall, Geranium pink. Late.



Minuet



Picardy

LILIES

- DAY LILY (Hemerocallis)—50c. each, \$5.00 per dozen.**
- Bay State.** Brilliant and glistening deep yellow. Vigorous, free blooming. Late June. 4 ft.
- Dr. Regel.** Handsome, rich, orange-yellow. Very fragrant. May. 18 in.
- Fulva (Brown Day Lily).** Tall, graceful Lily with orange-brown blossoms in June and July. Does well in shade or damp land.
- J. A. Crawford.** Rich apricot-yellow. June. One of the best. 4 ft.
- Lemona (Lemon Day Lily).** Large lemon yellow. July.
- PLANTAIN LILY (Funkia).** Low growing plant with broad shiny foliage. Sky blue flowers in July. 30c. each, \$3.00 per dozen.
- REGAL LILY (Regale).** White flowers suffused with pink. Very fragrant. June. 35c. each, \$3.50 per dozen.
- ROCK LILY (Yucca filamentosa).** Creamy white flowers in June and July. 4 to 5 ft. 25c. each, \$2.50 per dozen.
- UMBELLATUM grandiflorum.** Large, umbellate heads of light orange-red flowers; free flowering. 35c. each, \$3.50 per dozen.



Magic Lily AMARYLLIS HALLI or LICORIS

A rare, mysterious Lily. The foliage appears in early Spring, disappearing completely by early July. In August, straight stalks without foliage shoot up to 24 inches developing at the top umbels of large, beautiful, delicate lilac pink flowers. Perfectly hardy.

\$1.00 each, \$10.00 per dozen

★ PATHFINDER

The Weekly News Magazine
For The Whole Family. Now
In Its 50th Year of Continu-
ous Publication From
Washington, The Nation's
Capital

★HONEST ★IMPARTIAL ★ACCURATE

You get every week the latest in
national and international devel-
opments. Keeps you up-to-date on
the war. Our editors not only
report the news, in brief, simple
phrases, but give the background,
story and significance of the more
important events. Nothing flashy,
nothing wild, no smart-aleck writ-
ing, no axes to grind. Every one
in your family will want to be the
first to read Pathfinder every
week. Folks like it. You will too.

MAIL TODAY!

52 WEEKS
now only
\$1.00

OTHER WEEKLY FEATURES YOU'LL LIKE

Under the Dome— Short, interesting, late items on what is happening in Washington that you want to know about. Right now Washington is the World's news center and the editors give you the news and facts behind the news. Always an important page to you.

Personalities— Lots of one- and two-paragraph human interest items with photographs to give a picture of modern America. News about people— some big people, some movie stars— but in the main, about average people, the ones who make America tick as a democracy.

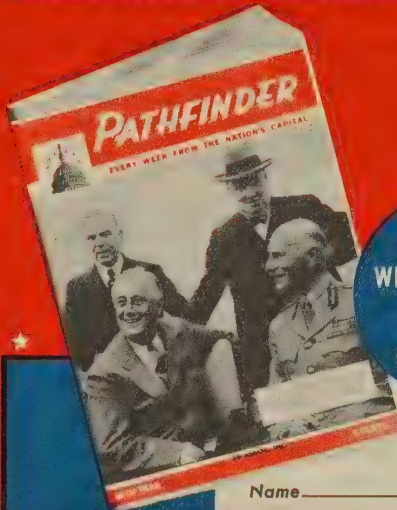
For Women Folks— Something special every week of interest to women and girls— fashions, patterns, fancy work, home decorations, and usable practical household helps. The young folks also will get a lot of fun from brain teasers, puzzles, cartoons, and jokes.

WEEKLY PATHFINDER — BIGGEST \$1.00 VALUE.

Mail Coupon with \$1.00 (at our risk) for 52 weekly issues, to
PATHFINDER, Dept. C., Pathfinder Building, Washington 18, D. C.

WAYNESBORO NURSERIES, INC.

Virginia's Largest Grower of Fruit Trees and Ornamentals



READ PATHFINDER

Get the inside facts from Washington

NOW more than ever before you want to know what is happening, not only at the Nation's Capital, but all over the world. At this new low price of only \$1.00 a year, you can get all the important news, accurate, complete every week in **PATHFINDER**, America's Oldest News Weekly. Bigger issues, better paper, and all greatly improved. No liquor or objectional advertising.

52
WEEKLY ISSUES
Only \$1.00

PATHFINDER, Dept. C., Pathfinder Bldg., Washington 18, D. C.
I'm enclosing \$1.00 for Pathfinder one year, 52 WEEKLY ISSUES.

Name _____

R. F. D. _____ Box _____ or Street _____

P. O. _____ State _____

IMPORTANT: Mail direct to **PATHFINDER** with \$1.00 (at our risk). Offer good only in U. S.

See
Other Side

WAYNESBORO NURSERIES, INC.

OPERATING TITUS NURSERY CO. AND BOXWOOD GARDENS



WAYNESBORO VIRGINIA

SPRING, 1944

DEAR PLANTER:

At the time our Catalogue went to press we were much enthused over the complete line of Plant Material we were offering for Spring 1944. We were especially happy over our extensive line of scarce Fruit Trees, Berry Plants, and Nut Trees, but even before our Catalogue was off the press some varieties and sizes had been exhausted. So we are compelled to modify our Spring Catalogue as follows:

APPLE: Have *Yorking* only in 1 yr. 2-3 ft. and 2 yr. 2½-3 ft.
Our supply of *Lowry*, *York*, *Vance Delicious* and *Winesap* is quite limited.

PEACH: Sold in *Elberta*, with the exception of a limited quantity 18-24 inch, but still have both *Early* and *Late Elberta*.

We also have at this time a very good stock of *Shipper's Red* and *Hale*, both of which are of the *Elberta* class and often marketed as *Elberta*.

CHERRIES: We still have a good stock of Large Montmorency, which is the best of the sour or pie varieties, but our supply of Sweet Cherries is quite limited and some varieties and sizes will possibly be exhausted before all of our Catalogues are in the hands of the planters. Should we be out of the variety which is your first choice, and you have a second choice, please name it; or if we cannot furnish for this Spring's delivery, advise whether we are permitted to book Cherry for next Fall at no advance in cost.

APRICOTS: Very scarce. If sold by the time your order is received shall we book for next Fall or send something else?

ENGLISH WALNUTS AND RHUBARB: Selling very close in these items.

ASPARAGUS: 1 yr. in planting guide should read \$2.25 per 50, \$4.00 per 100, \$7.00 per 250, \$12.00 per 500, \$20.00 per 1000.

CHINESE CHESTNUT: In addition to the sizes offered in our planting guide we offer the following bearing sized trees 4-6 ft. \$3.50 each, 6-8 ft. \$5.00 each, 8-10 ft. \$6.00 each.

IMPORTANT: You are urged to place your order early as there will not be enough Fruit Trees and Berry Plants to go around and the earlier you place your order, the larger will be the assortment from which to make a selection.

In case you have a second choice and we should be sold in the variety or size your order calls for, you will help us greatly by instructing us on what to substitute. We, of course, if possible, will fill your order in accordance with your first choice.

Very truly yours,

WAYNESBORO NURSERIES, INC.

EMQ/w

GARDEN SUPPLIES

GRASS SEED

WAYNESBORO EVERGREEN LAWN MIXTURE. A scientifically prepared Grass Seed Mixture which produces a beautiful sod in a few weeks and is green throughout the year. Extensively used for small home grounds, as well as public parks, college campuses, large estates, and wherever a beautiful, permanent sod is desired. The extensive demand for this mixture enables us to offer it for even less than frequently charged for common mixtures. Lb. 75c., 10 lbs. \$6.50, 100 lbs. \$60.00.

SHADY LAWN MIXTURE. Produces a good sod in shady places. Lb. 85c., 10-lb. bag \$7.50, 100 lbs. \$70.00.

NOTE—For seeding New Lawns, use 1 lb. either Evergreen or Shady Lawn Mixture to each 150 square feet to 200 square feet.

DOGZOFF

Protect your Evergreens with Dogzoff. Sprayed on the plants, keeps the dogs away. 3 oz. bottle, 75c., postpaid.



The New Soil Conditioner and Plant Food. **Rho-Za-Grow**, has taken the guesswork out of Rhododendron growing.

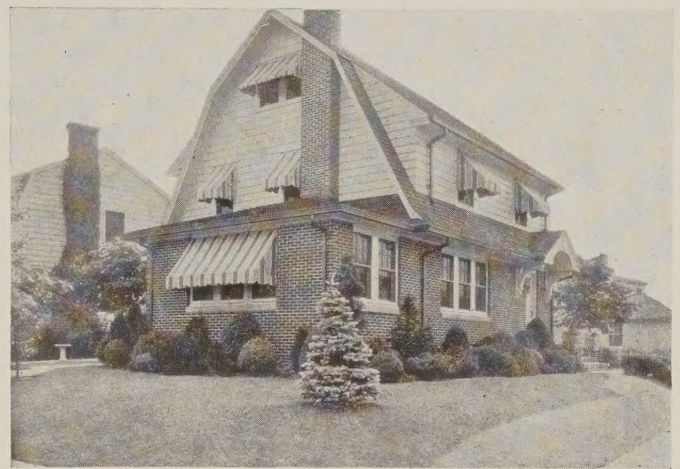
Rhododendrons and their kindred Broad-leaved Evergreens, the Azaleas, Kalmias, Hollies, etc., are lovely things, but many planters hesitate to plant these aristocratic American shrubs because of their exacting soil requirements.

Rho-Za-Grow is a scientifically balanced soil conditioner and plant food. Use it on all plants requiring sour soils. **Rho-Za-Grow** contains exactly the proper balance of acids, neutral plant food, and humus. It sours and lightens the soil, and it has high plant food content. Apply it to your Rhododendron and Azalea beds, and they will show their appreciation with a wealth of gorgeous blooms and healthy, deep green foliage.

10-lb. bag.....\$1.00 50-lb. bag.....\$3.50
25-lb. bag.....2.25 100-lb. bag.....6.00

Dry Lime-Sulphur

One of the best known sprays for scale; also used as a fungicide and as a control for red spider, mites, and thrips. For both the flower and vegetable garden. 1 lb. can, 50c., postpaid.



PEP-TO-GROW

A specially Prepared Balanced Lawn and Garden Plant Food which gives pep and vigor without danger of burning. We recommend an application in both Fall and Spring.

Apply **Pep-to-Grow** on your Lawn, Rose, and Perennial Beds at the rate of 4 lbs. per 100 square feet, on Shade Trees, Shrubs, Boxwoods, and other Evergreens at the rate of 1 lb. per plant or more, depending on size. Keep a supply of **Pep-to-Grow** on hand at all times.

Pep-to-Grow excels in Safe, Gradual Feeding, and Lasting Effects.

A 100-lb. bag costs only \$5.00; 1 ton, \$90.00

PESTROY

Both a fungus and chewing insect spray for the flower and vegetable garden. Contains Bordeaux Mixture, a popular spray for Rose and Cherry fungus, various rusts and mildew. Also contains arsenate of lead, which controls chewing insects. 4 lbs. \$1.60, postpaid.

POMO-GREEN WITH NICOTINE

Complete protection against Black Spot, Mildew, Leaf-eating Insects, Aphids. Endorsed by American Rose Society.

1-lb. can.....\$0.75
5 lbs. in bulk.....\$3.00

NOTE—DUE TO CHANGING CONDITIONS, PRICES ON GARDEN SUPPLIES ARE SUBJECT TO REVISION



A water-soluble powder containing Vitamin B-1 and other parts of Vitamin B, plus certain hormones vital to plant and root growth.

Applied when transplanting vegetable plants bedding plants, Roses, Shrubs, Evergreens, and trees, it greatly reduces transplanting losses and starts plants off with more vigor and vitality.

One 3-ounce box—which makes 30 gallons solution for soaking roots or 2000 to 3000 gallons for watering—\$1.05, postpaid; 1 lb. can, \$4.10 postpaid

SUNOCO

Kills Red Spider, which is the most common enemy of Evergreens. Also kills San Jose Scale, Rose Scale, Oyster-shell Scale, Pine-leaf Scale, and Euonymus Scale. 1 gallon makes 25 gallons dormant spray or 100 gallons Summer spray. 1-gallon can \$1.50, 4 gallons, \$1.25 per gallon; 55-gallon drum, 85c. per gallon.

For general information, see page 2

INDEX

Fruit Department, see pages 3 to 14

Abelia.....16, 24	Boysenberries.....Page 13	Fruit Trees, Espalier.....Page 7	Ivy—Continued:.....Page	Peonies.....Page 33	Salvia.....Page 33
Achillea.....31	Bush Honeysuckle.....17	Gaillardia.....32	Hahn's.....30	Pearl Bush.....19	Sedum.....33
Aegopodium.....31	Butterfly Bush.....17	Garden Supplies.....35	Pittsburgh.....30	Persimmon.....	Silver Lace Vine.....30
Agrostemma.....31	Campanula.....31	Ginkgo.....26	Jersey Tea.....18	Oriental.....10	Snowball.....19
Ajuga.....31	Canna.....34	Gladiolus.....34	Jethead.....18	Phlox.....32	Snowberry.....19
Akebia.....30	Catalpa.....26	Golden Chain.....28	Juniper.....22	Physostegia.....33	Sourwood.....28
Almond, Flowering.....16	Cedar.....21	Goldenrain Tree.....28	Kerria.....18	Pine.....23	Spiraea.....19, 20
Althaea.....16	Cerastium.....31	Grapes.....11	Kudzu Vine.....30	Plane.....27	Spruce.....23
Alyssum.....31	Cherries.....8	Grasses, Orna-.....32	Lathyrus.....32	Plant Foods.....35	Stachys.....33
Anthemis.....31	Flowering.....28	mental.....32	Laurel.....24	Platyodon.....33	Stokesia.....33
Apples:	Chrysanthemums.....31	Grass Seed.....35	Ligustrum.....25	Plums.....9	Strawberries.....14
Summer and Fall	Clematis.....30	Great Silver Bell.....28	Lilac.....18	Purple-leaved.....28	Sweet Pepper Bush.....20
Varieties.....3, 4	Coffee Tree.....26	Gypsophila.....32	Linden.....28	Plumbago.....33	Sweet Shrub.....20
Winter Varieties.....4, 5	Coralberry.....17	Holly.....26	Lily-of-the-Valley.....32	Pomegranate.....25	Sweet William.....33
Yorking.....5	Coreopsis.....31	Hawthorn.....18	Lilium.....34	Poplar.....27	Tamarix.....20
Apricots.....10	Cotoneaster.....17, 24	Heath.....25	Lily.....32	Poppy.....33	Thymus.....33
Aralia.....16	Cranberry Bush.....17	Heather.....25	Linum.....32	Primrose, Evening.....32	Tritoma.....33
Arborvitae.....21	Crapemyrtle.....17	Heliopsis.....32	Locust.....28	Hardy.....33	Trumpet Vine.....30
Arrow-Wood.....16	Cucumber Tree.....28	Heliopsis.....32	Lonicera.....25	Privet.....18, 19, 20	Tulip Tree.....30
Artemisia.....31	Delpinium.....32	Hemlock.....22, 23	Lychnis.....32	Purple Fringe.....19	Tunica.....33
Ash, White.....26	Desmodium.....17	Herbs and Garden	Magnolia.....25, 28	Pussy Willow.....19	Veronica.....33
Mountain.....28	Deutzia.....17	Roots.....15	Maple.....26, 27	Pyraecantha.....25	Viburnum.....25
Asparagus.....15	Dewberries.....12	Hibiscus.....32	Bloodleaf.....18	Quince, Flowering.....18	Vinca.....30
Asters.....31	Dianthus.....32	Holly.....25	Mertensia.....32	Raspberries.....12	Viola.....33
Aubrietia.....31	Dicentra.....32	Hollygrape.....25	Mimosa.....28	Redbud.....28	Virginia Creeper.....30
Azaleas.....24	Dogwood.....17, 28	Hollyhocks.....32	Mockorange.....19	Retinospora.....23	Vitex.....20
Baptisia.....31	Echinacea.....32	Honey Locust.....26	Mulberry, Russian.....10	Rhododendron.....25	Walnut.....27
Barberry.....16, 24	Elaeagnus.....24	Honeysuckle.....30	Nandina.....25	Rhubarb.....15	Weigela.....20
Beautyberry.....17	Elder.....17	Hydrangeas.....18	Nectarines.....10	Roses:	White Fringe.....20
Beautybush.....17	Elm.....26	Hypericum.....18, 25	Nut Trees.....15	Climbers.....30	Willow, Weeping.....27
Beech.....26	Euonymus.....17, 25	Insecticides.....35	Oak.....27	Gold Medal.....	Winterberry.....20
Birch.....26	Eupatorium.....32	Iris.....34	Orange Quince.....10	Hybrids.....29	Wintercreeper,
Bittersweet.....30	Euphorbia.....32	Ivy:	Pachysandra.....30	Imperial Dozen.....29	Purple.....30
Blackberries.....12	Figs.....10	Baltic.....30	Pawpaw.....10	Polyanthus.....30	Winter Jasmine.....20
Blueberries.....13	Fir.....22	Boston.....30	Peaches.....6, 7	Miscellaneous.....30	Wisteria.....30
Boxwood.....24	Forsythia.....18	English.....30	Planting Guide.....7	Rosemary.....19	Yew.....23



Waynesboro's **GOLD MEDAL**
COLLECTION OF SIX ROSES

A selection from our Gold Medal group described on page 29. All are 2-year, No. 1 Blooming Size Plants.

- ETOILE DE HOLLANDE - Dark Red
- K. A. VICTORIA - White
- RED RADIANCE - Red
- PRESIDENT HOOVER - Pink and Gold
- LADY HILLINGDON - Yellow
- PINK RADIANCE - Pink

6 Roses
for only \$4.⁵⁰